
*

(/ / : / / :)

)

(

:

...

)
()
:
(:)
(:)

(:)
()

(:)

) ()
(:) //
()

... //

(:)
()

Key to soil taxonomy 1998

Aridisols, Entisols

FAO/UNESCO/ 1998

Lithic Leptosols, Haplic Calcisols, Haplic
Gypsisols, Eutric Regosols, Eutric
Fluvisols

()

:

Estimation and

Double Sampling

Range condition

USFS ,1969

()

()

:

...

Q		P	M	M			
	()	()	- ()	()	()		
	/	/	/	/			
/	/	/	/	/			
	/		/	/			
/	/			/			

	()			

:

()

A.U.M

.(: .)

()

*

)

.(

				A.U.M			
				/			
				/			
		/		/		-	
		/	/	/			
		/	/	/			

:

()

()

%

()

.

...

/		/		/			
		/		/			
		/		/			
		/		/			

:

()

:

/

-

()

(:)

/

-

)

(

/

-

-

-

-

-

/

-

()

A.U.M/HA

-

/ A.U.M/HA

/

-

-

:

-

()

()

-

:

-

-

-

-

-

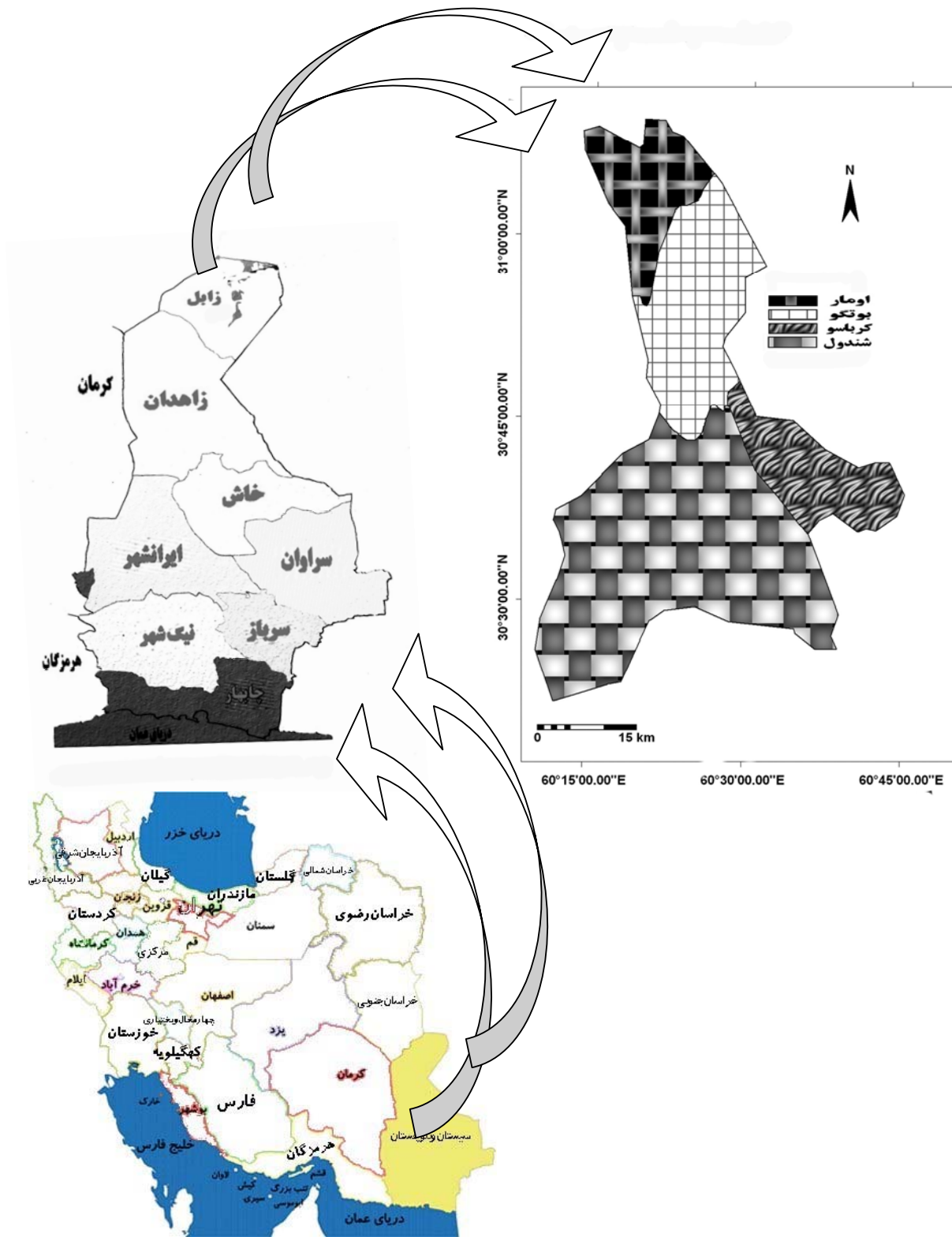
-

-

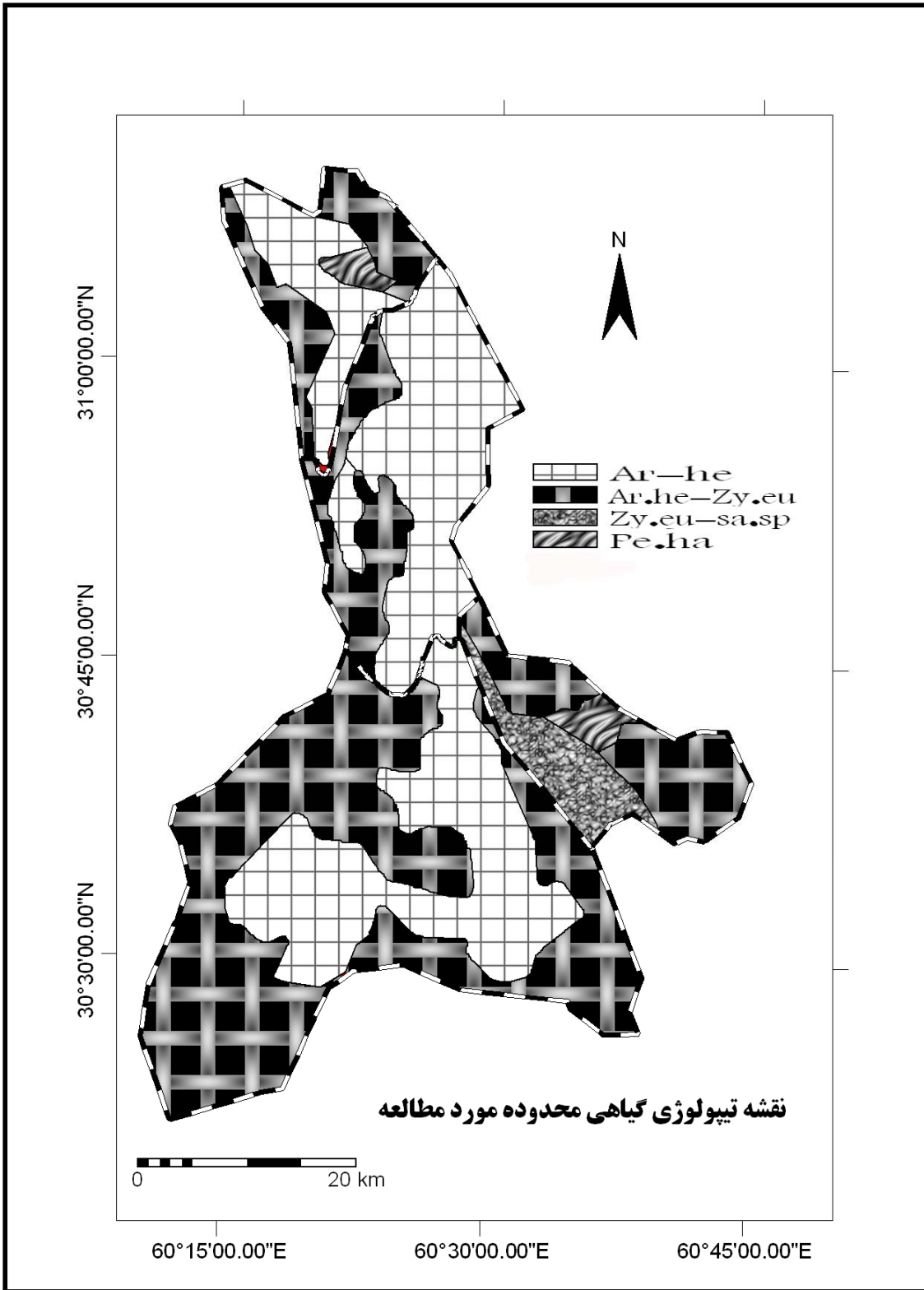
-

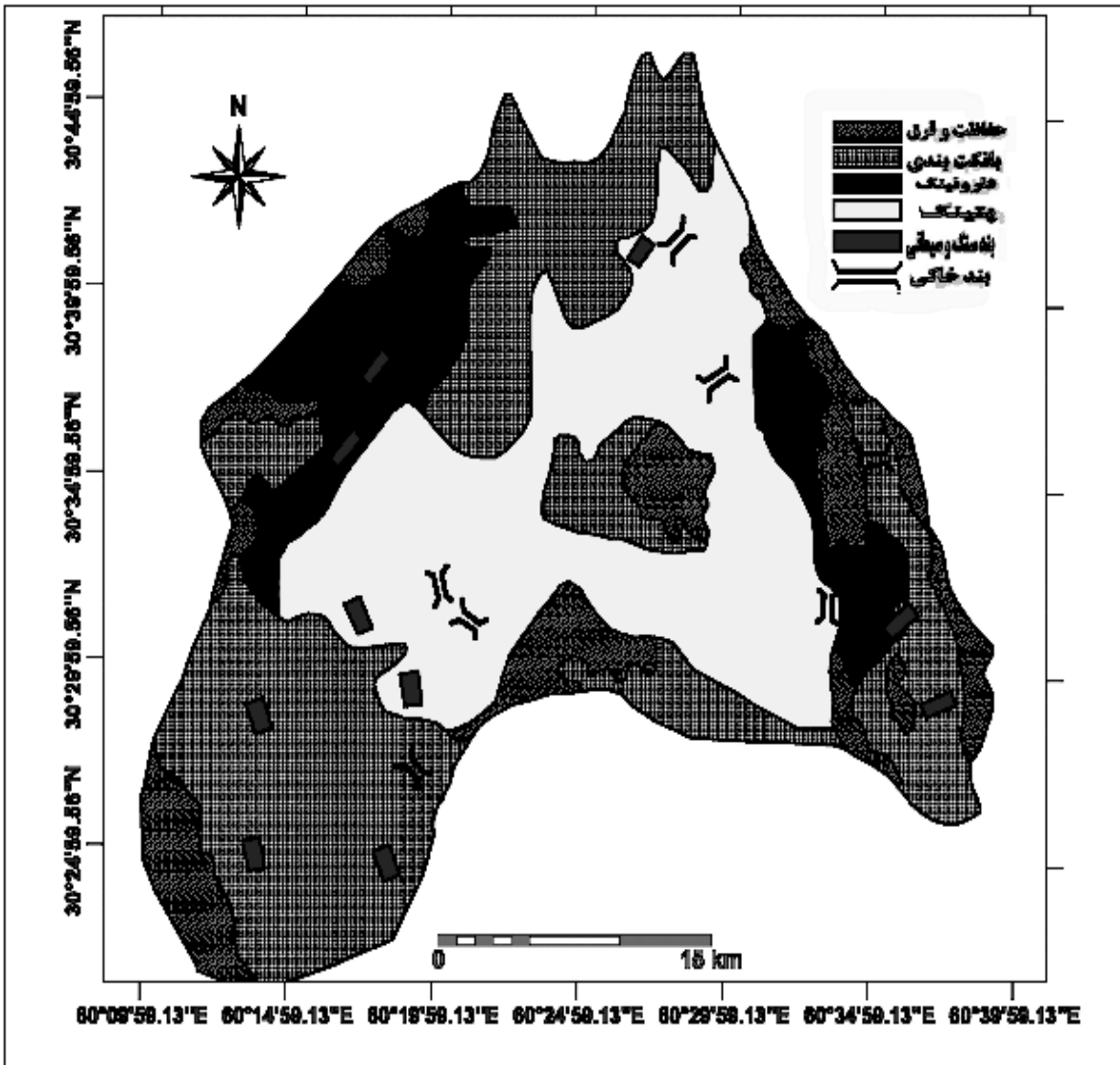
-

-



موقعیت





()

«

»

()

()

«()

»

* * * *

A feasibility study of the northern plain of Sistan and Baloochestan province for relocating Sistan volunteer migrating tribes summer settlement

F. Barimani^{*1}, N. Jahantigh²

¹ Assistant Prof, Department of Geography, University of Sistan and Baloochistan, I. R. Iran

² Expert, Sistan and Baloochistan Agricultural Jihad Organization, I. R. Iran

(Received: 23 February 2005, Accepted: 25 February 2008)

Abstract

Despite of dry and hot climatic conditions, Sistan plain in the wet years by using Hirmand river and flooding parts of Hamoons with relatively good plant cover, provides winter settlements for Sistani migrating tribes (nomads). These tribes have a typical territory in southern Khorasan. But host province prevents their entering because of several reasons such as range capacity limitation, increasing of the number of livestock, un-organized grazing higher than the range capacity, disturbing the balance between livestock and pasture. This prevention came much more tighten when drought began in 2000, which still is continuing. After some negotiations, the relevant organizations allowed only 330, from the total a number of 1300 households to use their typical summer ranges in the south of Khorasan province. As a result of this limitation, the Department of Tribal Affairs of Sistan and Baloochistan has decided to make some researches in order to find new rangelands as an alternative for their typical pastures. To fulfill these requirements, the authors have made some studies in the province's northern plains. On the other hand, among the target groups, the tribes, intending to change their summer settlements have been recognized. Then, based on the research findings, Shandol plain was selected as an alternative for Barahoei and Naroee tribes settlement (63 households) with 3056 livestock units.

Key words: Nomads, Shandol plain, Omar, Karbaso, Botogo, Sanjedo, Sistan, Southern Khorasan