

---

**(SAR)**

**(EC)**

**(TSS)**

**(ESP)**

**Arcview Autocad map 2000i**

**GIS**

---

( )

( ) ( )

( )

( )  
( )

« »

( )

( )

---

( )

( )

( )

( )

---

« »

( ) « »  
( )

( )  
( ) ( )

( )

( )

/

/

/

- :

(  
(

( )

( )

---

( )

---

---

: .( )

.( )

: : ( )

( ) .( )

.( )

(SAR) (Ec)  
(TSS) )

( ) ( )

) ( )

---

Electrical Conductivity .( )  
Sodium Adsorption ratio  
Total Soluble salts

---

/ EC

( )

)

(

( )

Autocad

GIS

ArcView map2000i

:

:

( )

GIS

GIS

)

(

UTM

( )

)

(

---

( )			( )			
/	/	/	/	/		
/	/	/	/	/	/	
/	/	/	/	/	/	
/	/		/	/	/	
				/	/	

	( )			( )			
/	/	/	/	/	/	/	
/	/	/	/	/	/	/	
/	/	/	/	/	/	/	

( )

( )

( )

---

		( )		( )			
			/	/			
/	/				/	/	
/	/	/					
/	/	/					
/	/	/		/			

( )

)

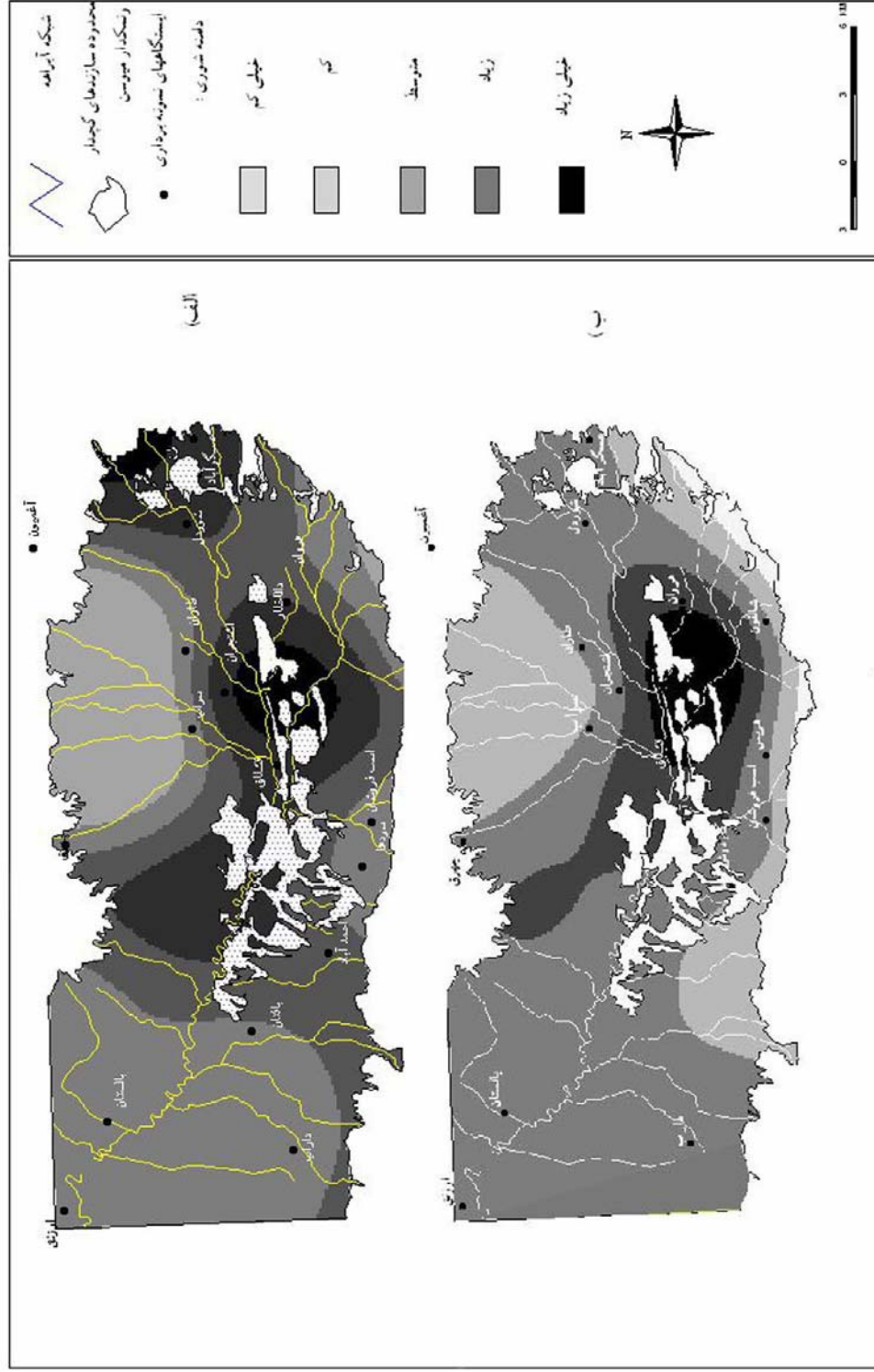
(



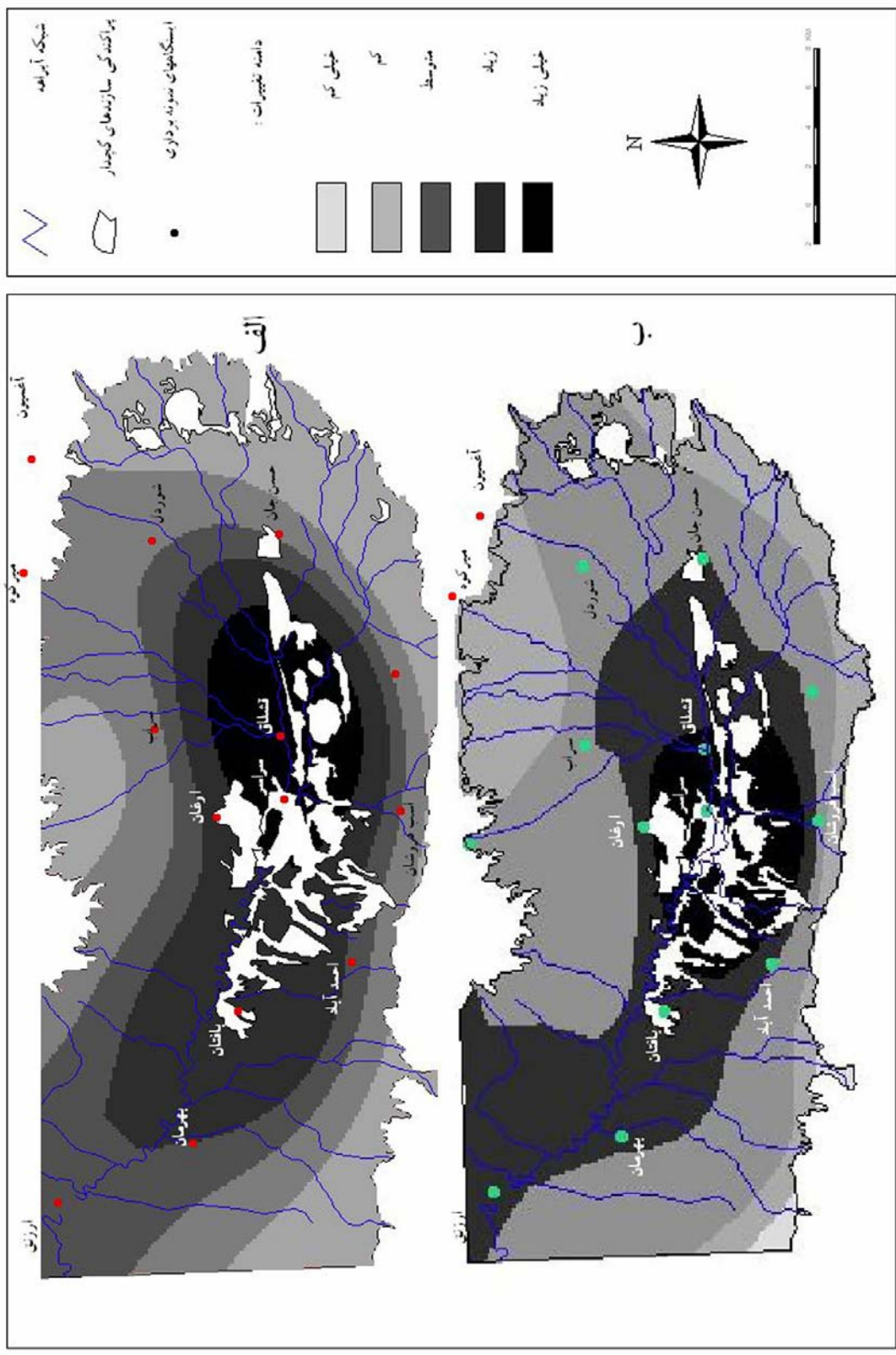




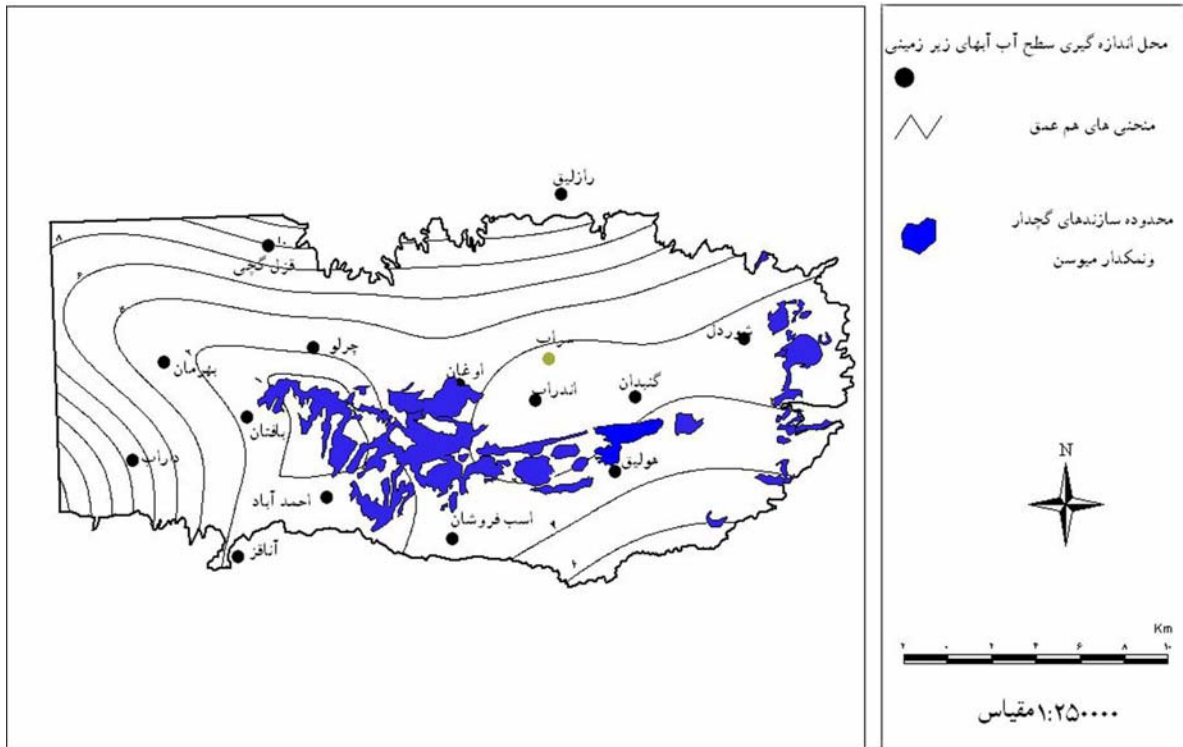




شکل ۵



شکل ۶ - الف) پهنه بندی آبهای سطحی شور بر مبنای متغیر  $EC_{10}^3$  در دشت سراب ب) پهنه بندی آبهای سطحی SAR قلیاس بر مبنای متغیر در دشت سراب



شکل ۷ - نقشه هم عمق آبهای زیر زمینی دشت سراب

( )

( )

( )

( )

( )

( )

---

( )

( )

:( )

( )

17-Bull,W.B. 1991.Geomorphic responses to climatic change. Oxford University Press. pp:326.

18- Cooke, R., A.Warren & A.Goudie, 1993.Desert geomorphology, University College London (UCL) Press., 526 pp.

19-Goudie, A., B.W.Atkinson, K. J.Gregory, I.G.Simmons, D. R. Stoddart & D. Sughen,1985. The encyclopaedic dictionary of physical geography, Basial Blackwell Ltd., 527 pp.

20-Jackson, M., R.Cornelius, C.Craing, A. Gansser, J. Stocklin & C. Talbot, 1990. Salt diapirs of the Great Kavir, Central Iran, Geological Society of American., 139pp.

## An Analysis of the Contribution of Morphogenetic Factors in Salinity of Lands in Sarab Plain

F. Karami<sup>1</sup>

H. Rostamzadeh<sup>2</sup>

### Abstract

Salinity of lands around Ormieh lake watershed, specifically to its northeast, east and southeast as well as a development of salt marsh which harms agricultural lands originates from morphological problems. This paper is an analysis of the main factors related to this phenomenon in parts of the Ormieh lake watershed (Sarab plain). In this study, experiments were carried out and results obtained of soil, surface water, and ground water, at different points in Sarab plain. Then, such variables as Electrical Conductivity (EC), Sodium Adsorption Ratio (SAR), Exchangeable Sodium Percentage (ESP) and Total Soluble Salt (TSS) were analysed. The isodepth groundwater maps of Sarab plain have been drawn on the basis of water table data of piezometric as well as observation wells. The results indicate the cause of salinity of the lands in Sarab Plain to be of geological origin (its adjacency to the marl and gypsum formation). A contribution of factors such as semiarid climate, evaporation and salt groundwater uplift along with saline surface water have intensified the salinity process and increased the development of salinity throughout the lands of Sarab plain. At present, salinity phenomenon threatens agricultural lands of Sarab Plain. Transfer of salts by Aji-chai river toward Tabriz Plain constitute a salt pollution source for groundwater and surface water.

**Keywords:** Morphogenetic factors, Salinity of lands, Geological factor, Agricultural lands, Sarab plain, Aji-chai River.