

()

*

(/ / : / / :)

)

(

(

)

:

(Plancquaert et al.,

.1990)

(Kropff et al., 2000; Corre-

.Hellou & Crozat, 2005; Patel et al., 2006)

.(Knights, 1991)

.(Anonymous, 2004)

(Saxena, 1984)

(1988) Khana-Chopra & Singh

(Miller et al., 2002)

(2000) Bagheri et al.

()

(Knott & Halila, 1988)

(Bhalla et al., 1998)

/

(Mohammadi, 1995)

Ghassemi-Golezani et al.

(2000)

(Knott & Halila, 1988)

(ICARDA, 1987)

(Saxena & Singh,

1987)

)

(

/

(Mohammadi et al., 2005)

/

/

...

:

()

(w1)
(w4) (w3) (w2)

(w5)

(1988) Khana-Chopra & Singh

()

(Rathore, 2001; Rajin Anwar et al., 2003)

(2003) Fallah

()
W5 W2 W4 W3 W1
W5 W2 ()

/ x

(SAS Institute, 1990) SAS

(Mclachlan et al., 1993)

()

	/	/	/	/	/	/	/	/	/
**	/ *	/	/	/ *	/	/	/ **	/	/
*	/	/	/ **	/ **	/	/ **	/ **	/ **	
	/	/	/	/	/	/	/	/	*
	/	/	/	/	/	/	/	/	

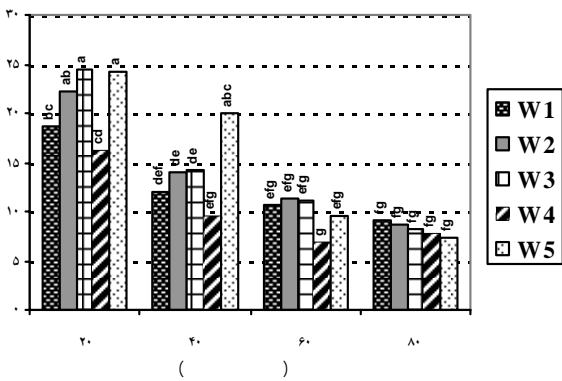
** *

()

() Fallah

()

()



() ()

()

()

:W1

:W4 W3 W2

:W5

(Fallah et al., 2005)

W4 ()

W3 ()

()

...

:

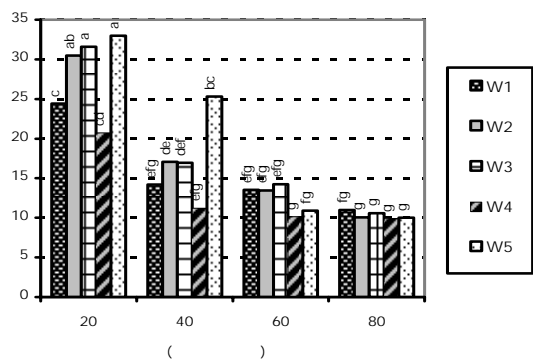
W4 . W5 /

W4

(2003) Regan et al. .

/ /

()



(Saxena & Singh, 1987)

()

()

:W1 .

:W4 W3 W2

(Ehsanzadeh, 2003; Fallah et al., 2005)

:W5

()

()

()

()

W4

()

(1997) Matron .

W3

/

()

/

() ()	()	()	()	()	()	()	()	()	()
b	/ b	/ a	/ b	/ a	/ a	/ a	/ a	/ a	W1
a	/ a	/ a	/ b	/ a	/ a	/ bc	/ a	/ a	W2
a	/ a	/ a	/ ab	/ a	/ a	/ ab	/ a	/ a	W3
b	/ a	/ a	/ b	/ a	/ a	/ ab	/ a	/ a	W4
a	/ a	/ a	/ a	/ a	/ a	/ c	/ a	/ a	W5
()									
b	/ a	/ a	/ a	/ a	/ a	/ c	/ a	/ a	
a	/ a	/ a	/ b	/ b	/ a	/ b	/ b	/ b	
a	/ a	/ a	/ b	/ b	/ a	/ b	/ b	/ b	
a	/ a	/ a	/ b	/ b	/ a	/ a	/ b	/ b	

W1

W5

W4 W3 W2

W4

(2000) Ghassemi-Golezani et al.

(1997) Nezami & Bagheri

(2000) Ganjeali et al.

Ahlawat et al.

(1981)

(1987) Saxena & Singh

(1988) Knott & Halila

()

()

REFERENCES

1. Ahlawat, I. P. S., Singh, A. & Saraf, C. F. (1981). It pays to control weeds in pulses. *Indian Farming*, 31, 11-13.
2. Anonymous. (2004). *Statistical data of Jihad-Keshavarzi Ministry*. from <http://www.agri-jahad.ir> (In Farsi).
3. Bagheri, A., Nezami, A., Mohammadabadi, A. A. & Shabahang, J. (2000) Study on the effects of weeding and plant density on morphological characteristics, yield and yield components of chickpea in north of Khorassan. *J Agricul Sci Technol*, 14 (2), 146-153. (In Farsi).
4. Bhalla C. S., Kurchania, S. P. & Paradkar, N. R. (1998). Herbicidal weed control in chickpea (*Cicer arietinum* L.). *World Weeds*, 5, 121-124.
5. Corre-Hellou, G. & Crozat, Y. (2005). N₂ fixation and N supply in organic pea (*Pisum sativum* L.) cropping systems as affected by weeds and pea weevil (*Sitona lineatus* L.). *Eur J Agron*, 22 (4), 449-458.
6. Ehsanzadeh, P. (2003). Influence of varying plant densities and two sowing methods on yield and yield components of chickpea (*Cicer arietinum* L.) under dryland conditions in Aligoodarz, Lorestan. *J Agricul Sci*, 3(3), 15-31. (In Farsi).
7. Fallah, S. (2003). *A evaluation of growth, yield and yield components of three chickpea genotypes at varied different plant densities under dryland conditions of Lorestan*. M.Sc. dissertation, Isfahan University of Technology, Iran. (In Farsi).
8. Fallah, S., Ehsanzadeh, P. & Daneshvar, M. (2005). Grain yield and yield components in three chickpea genotypes under dryland condition with and without supplementary irrigation at different plant densities in Khorram-Abad, Lorestan. *Iranian J Agric Sci*, 36, 719-731. (In Farsi).
9. Ganjeali, A., Malekzadeh, S. & Bagheri, A. (2000). Effect of plant population density and planting pattern on trend of growth indices of chickpea (*Cicer arietinum* L.) in Neishabour region. *J Agricul Sci Technol*, 14(2), 31-41. (In Farsi).
10. Ghassemi-Golezani, K., Mohammadi, S., Rahimzadeh Khoyi, F. & Moghaddam, M. (2000). The quantitative relationships between plant population density and grain yield of three chickpea varieties at different sowing dates. *J Agricul Sci*, 7, 59-73. (In Farsi).
11. [ICARDA] International Center for Agricultural Research in Dry Area-Farming System Program. (1987). *Annual Reports*. Aleppo, Syria.
12. Khana-Chopra, R. & Singh, A. (1988). What limits the yield of pulses? Plant process or plant type. In: *Proceeding of the International Congress of Plant Physiology, Society for Plant Physiology and Biochemistry*. New Delhi, India, pp. 68-278.
13. Knights, E. (1991). Chickpea. In R. S. Jessop & R. L. Wright (Eds), *New Crops-Agronomy & Potential of Alternative Crop Species*. (pp. 27-38). Inkata Press. Melbourne, Australia.
14. Knott, C. M. & Halila, M. H. (1988). Weed in food legumes: problems, effects and control methods. In: *Proceedings of an International Conference on Food Legumes in Spokane, USA*, 6-11 July.
15. Kropff, M. J., Baumann, D. T. & Bastiaans, L. (2000). Dealing with weeds in organic agriculture-challenge and cutting edge in weed management. In: T. Alfo` ldi, W. Lockeretz & U. Niggli (Eds.), In: *Proceedings of 13th IFOAMScientific Conference, The World Grows Organic*, pp. 175-177.
16. Maron, J. L. (1997). Interspecific competition and insect herbivory reduce bush lupine (*Lupinus arboreus*) seedling survival. *Oecologia*, 110, 284-290.
17. McLachlan, S. M., Tollenaar, M., Swanton, C. J. & Weise, S. F. (1993). Effect of corn-induced shading on dry matter accumulation, distribution and architecture of redroot pigweed. *Weed Sci*, 41, 568-573.
18. Miller, P. R., McConkey, B. G., Clayton, G. W., Brandt, S. A., Staricka, J. A., Johnston, A. M., Lafond, G. P., Schatz, B. G., Baltensperger, D. D. & Neill, K. E. (2002). Pulse crop adaptation in the northern great plains. *Agron J*, 94, 261-272.
19. Mohammadi, G., Javanshir, A., Khoorie, F. R., Mohammadi, S. A. & Zehtab Salmasi, S. (2005). Critical period of weed interference in chickpea. *Weed Res*, 45 (1), 57-63.
20. Mohammadi, S. (1995). *The relationship between plant population density and grain yield of three chickpea varieties at different sowing dates*. M. Sc. dissertation, Tabriz University, Iran. (In Farsi).
21. Nezami, A. & Bagheri, A. (1997). Effects of weeding and plant population density on yield and yield components of chickpea (*Cicer arietinum* L.). *J Agricul Sci Technol*, 11, 53-64. (In Farsi).
22. Patel, B. D., Patel, V. J., Patel, J. B. & Patel, R. B. (2006). Effect of fertilizers and weed management practices on weed control in chickpea (*Cicer arietinum* L.) under middle Gujarat conditions. *Indian J Crop Sci*, 1(1-2), 180-183.
23. Plancquaert, P. H., Braun, P. H. & Wery, J. (1990). Agronomic studies on chickpea (*Cicer arietinum*). *Options Mediterraneenes-serie Seminarires*. 9, 87-92.
24. Rajin Anwar, M., Mckenzie, B. A. & Hill, G. D. (2003). Phenology and growth response to irrigation and sowing date of Kabuli chickpea (*Cicer arietinum* L.) in a cool-temperate sub humid climate. *J Agric Sci*, 141, 273-284.

25. Rasmussen, I. A., Askegaard, M., Olesen, J. E. & Kristensen, K. (2006). Effects on weeds of management in newly converted organic crop rotations in Denmark Agric. *Ecosyst Environ*, 113 (1-4), 184-195.
26. Rathore, P. S. (2001). *Techniques and Management of Field Crop Production*. Agrobios, India.
27. Regan, K. L., Siddique, K. H. M. & Martin, L. D. (2003). Response of kabuli chickpea (*Cicer arietinum*) to sowing rate in Mediterranean-type environments of south-western Australia. *Aust J Experiment Agric*, 43, 87-97.
28. SAS Institute. (1990). *SAS/Stat User's Guide*. Version 6. SAS Inst., Cary, NC.
29. Saxena, M. C. & Singh, K. B. (1987). *The chickpea*. CAB . International UK.
30. Saxena, N. P. (1984). *Chickpea*. In P. R. Goldsworthy & N. M. Fisher (Eds), *The physiology of Tropical Field Crops*. (pp. 419-52). John Wiley and Sons. New York.