

()

*

(// : // :)

(°C) (°C °C) °C °C (°C °C

°C

°C °C

.(P< /)

°C °C

Micro-Tinna x MSK8 Micro-Tinna x Moneymaker

/ / °C (/)

() °C / / °C

/ °C **Micro-Tinna** / °C **MSK8**

()

:

.()

)

.() (

() ()

1 - Androgenesis

2 - Gynogenesis

E-mail: motallebi2002@yahoo.com

()

(.)

°C

()

)

()

°C

()

()

(.)

()

()

()

()

()

(ms10³⁵

) Romma

()

°C

()

()

()

°C

()

(/)

(/)

(°C)

°C

°C

, Micro-Gemma Micro-Tina)

()

MSK8 Moneymaker

(

(°C)

Brassica

()

()

(.)

°C

()

MS +2 mg/l IAA+1 : (M)

() mg/l 2ip

± °C

± °C

Doy's basal medium : (M)

()

1(DBM1)+5 mg/l kin+2 mg/l NAA

()

() MS+1 mg/l Zeatin + 0.025 mg/l IAA

MS + 0.02 mg/l 2,4- : (M)

mg/l zeatin

D + 2 mg/l kin

/ /

() MS+0.3

()

()

()

)

/

(

x

()

)

(

μmol s m

SAS

(MS + mg/l IBA + / mg/l GA₃)

()

()

°C

()

°C

°C

(D) (P< /)
) (E)
) () (P< /)

(F) ()
 H G .

Micro- × MSK8

Micro-Tina x MSK8

Tina

(A)

(B)

(C)

()

()						
	+	+	+	+	+	+

()

()					
	+	+	+	+	+
	+	+			

: :+

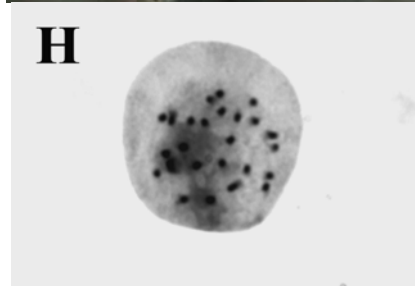
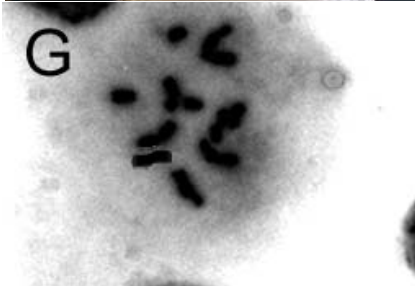
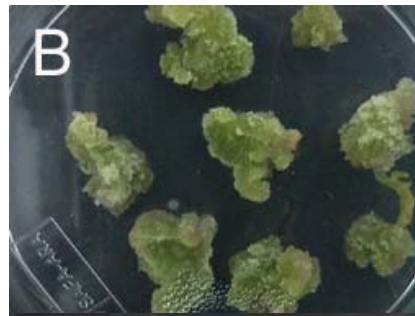
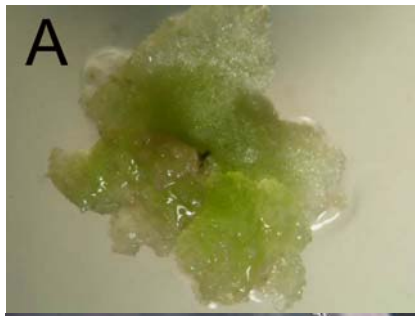
(mm)

		/ **	/ **	/ **
		/ **	/ ns	/ ns
		/ **	/ **	/ **
*		/ **	/ **	/ **
*		/ **	/ **	/ **
*		/ **	/ **	/ ns
*	*	/ **	/ **	/ **
		/	/	/
()	—	/	/	/

**

*

ns



D G C B A :

G F
Micro Tina x MSK8

H E

H . Micro Tina x MSK8

°C
/) °C
() (/) °C
(/) M

°C
°C

(P < /)

()

M

× Micro-Tina

()

MSK8 × Micro-Tina Moneymaker

()

()

()	(mm)	()	
/ D	/ A	/ A	()
/ A	/ A	/ A	
/ C	/ C	/ C	
/ B	/ B	/ B	
/ AB	/ B	/ B	
/ D	/ C	/ C	
/ A	/ A	/ B	M1
/ A	/ A	/ A	M2
/ A	/ A	/ B	M3
/ C	/ CD	/ C	MT (P1) *
/ B	/ BCD	/ B	MG (P2)
/ C	/ D	/ C	MO (P3)
/ B	/ CD	/ BC	MS (P4)
/ C	/ CD	/ C	MT x MG (H12)
/ A	/ AB	/ A	MT x MO (H13)
/ A	/ A	/ A	MT x MS (H14)
/ B	/ BC	/ BC	MG x MO (H23)
/ B	/ CD	/ BC	MG x MS (H24)
/ B	/ CD	/ BC	MO x MS (H34)

MSK8 Moneymaker Micro- Gemma Micro-Tina

:*

$\text{°C} \quad (\quad / \quad) \text{MSK8} \quad) \text{M}$
 $\times \text{Micro-Tina} \quad (\quad / \quad / \quad) \quad \text{°C} \quad (\quad / \quad)$
 $\text{°C} \quad (\quad / \quad) \text{Moneymaker} \quad (\quad / \quad) \text{M}$
 $\text{Micro-Gemma} \quad .$
 $(\quad / \quad / \quad) \quad \text{°C} \quad \text{°C}$
 $/ \quad) \quad \text{°C}, \quad \text{°C} \quad \text{MSK8} \quad) \quad (\quad)$
 $(\quad / \quad) \quad (\quad)$
 (\quad)

Micro- :

$\text{M} \quad (\quad)$
 $\text{MSK8} \times \text{Gemma}$
 $\text{MSK8} \times \text{Micro-Tina} \quad \text{Moneymaker} \times \text{Micro-Tina}$
 $(\quad / \quad / \quad) \quad \text{°C}$

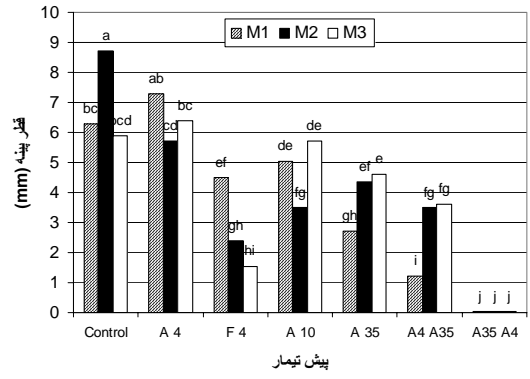
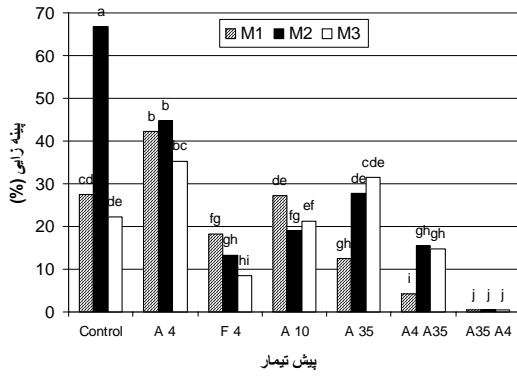
$\text{MSK8} \times \text{Micro-Tina} \quad \text{Moneymaker} \times \text{Micro-Tina}$
 $\text{Moneymaker} \times \text{Micro-Tina} \quad \text{MSK8} \times \text{Micro-Tina}$
 $(\quad / \quad / \quad) \quad \text{°C}$

Micro-Gemma (\quad)

$\text{MSK8} \quad (\quad)$
 (\quad)

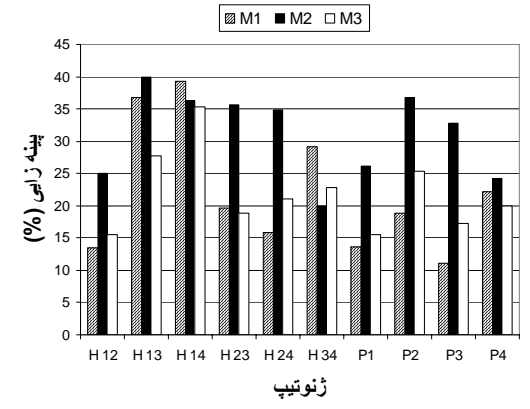
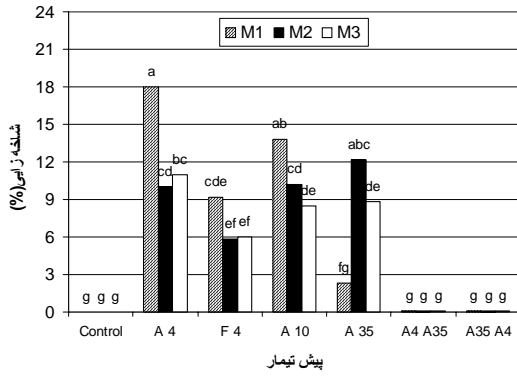
$\times \text{Micro-Tina}$

/	/	/ KL	/ NO	/ MNO	/ LM	/ MT(P1)*
/	/	/ FG	/ LM	/ HI	/ LM	/ MG(P2)
/	/	/ I	/ MNO	/ O	/ O	/ MO(P3)
/	/	/ LM	/ HI	/ FG	/ LM	/ MS(P4)
/	/	/ LM	/ MNO	/ MNO	/ MNO	/ MTxMG(H12)
/	/	/ HI	/ B	/ BE	/ CD	/ MT x MO(H13)
/	/	/ GH	/ FG	/ A	/ BC	/ MT x MS(H14)
/	/	J	/ I	/ MN	/ MN	/ MG x MO(H23)
/	/	KL	/ GH	/ EF	/ NO	/ MG x MS(H24)
/	/	/ HI	/ K	/ IJ	/ O	/ MO x MS(H34)



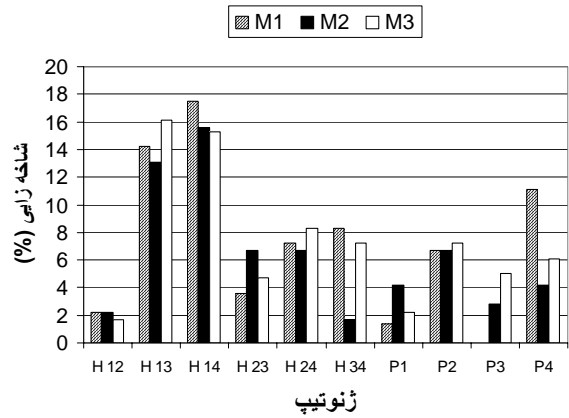
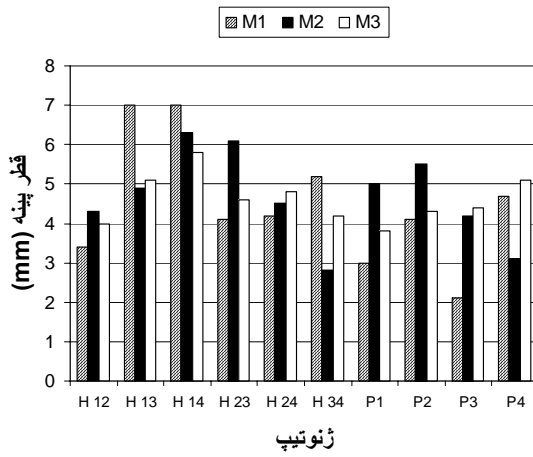
(. F A).

(. F A).



(. F A).

(. H P).



ژنوتیپ

ژنوتیپ

...

:

P).

(H

P).

(H
:*

()

°C

()

)

× Micro-Gemma MSK8 × Micro-Tina
Moneymaker

()

(

°C

)

() (

°C MSK8 ()
Micro- (/ /) °C

(.)

) °C °C MSK8 × Gemma

Micro-Gemma (/
(/ /) Moneymaker

()

°C Moneymaker × MSK8

()

()

°C ()

()

()

°C °C °C

M °C

(/ /)

/ / / /

/ /

REFERENCES

Lycopersicon esculentum Mill.

()

2. Bhojwani, S., & S. Razdan. 1996. Plant tissue Culture. Springer. pp. 125-167.
3. Chlyah, A, H. Taarji, & H. Chlyah. 1990. Tomato (*Lycopersicon esculentum* L.): Anther culture and induction of androgenesis. Y. P. S. Bajaj (ed): *Biotechnology in agriculture and forestry, Vol. 12: Haploids in crop improvement I*. pp. 442-457.
4. Dao, N. T. & R. G. Butenho. 1976. Tomato anther culture. *Haploid Inf. Serv.* 16:10-14.
5. Debergh, P. 1978. Contribution to the induction of haploidy. *Verhandelingen Van. de Koninklijke Academie.* 40:150.
6. Evans, D. A. & R. A. Morrison. 1989. Tomato anther culture. *United States patent:* 4, 835,339.
7. Forster B.P., & W. Powell. Haploidy in barley. In: Mohan Jain S., et al.(ed). In vitro haploid production in higher plants. Volume 4: Cereals. Dordrecht, the Netherlands: Kluwer Academic Publishers, 1997:99-115.
8. Gao, X., J. Wany, B. Jin & H. liu. 1980. Planlete of tomato obtained from anther culture in vitro. *Acta Hort. Sci.* 7:37-42.
9. Gresshoff. P. M. & C. H. Doy. 1972. Development and differentiation of haploid *Lycopersicon esculentum* (tomato). *Planta.* 107: 2, 161 – 170.
10. Gulshan, T. M. V. & D. R. Sharma. 1981. Studies on anther cultures of tomato *Lycopersicon esculentum* Mill). *Biol. Plaut.* 23. 414-420.
11. Hender, A. B. 1973 Anther culture in the cultivated tomato, *Lycopersicon esculentum*. Glasshouse Crops Research Institute: *Annual Report, 1972.* Littlehampton, UK: 130-733.
12. Jaramillo, J. 1988. Anther culture in the tomato (*Lycopersicon esculentum* Mill.) Callus production and plantlet production studies. *Ph.D. Dissertation, Iowa State Univesity, Amer.*
13. Jaramillo, J. & W. L. Summers. 1990. Tomato anther callus production: Solidifying agent and concentration influence induction of callus. *J. Amer. Soc. Hort.* 115: 6, 1047-1050.
14. Lee, H. Y., J. O. Jeon, J. G. No & H. G. Park. 1999. Effect of several factors on callus induction in anther culture of cherry tomato. *J. Kor. Soc. Hort. Sci.* 40: 537 -540.
15. Levenko, B. A. & A. Kiforak. 1975. A study of the mitotic activity and ploidy of the cells in callus at tomato treated with phytohemaglutinin. *Genetika, USSR.* 11:3, 167-170.
16. Levenko, B. A., V. A. Kunakh & G. N. Yurkova. 1978. Studies on callus tissue from anther. I. Tomato. *Phytomorphology.* 27: 4, 377-382.
17. Luz, J. M. Q., J. E. B. P. Pinto, P. A. Dias & E. S. Cerqueira. 1997. Effects of silver nitrate, activated charcoal and acetylsalicylic acid on embryogenesis of sweet pepper (*Capsicum annum* L.) anthers. *Ciencia e Agrotecnologia.* 21: 4, 447-456.
18. Park, J. B., Y. B. Yi. & C. K. Lee. 2001. Effect of plant growth regulators, donor plant bud length, low temperature treatment and glucose concentration on callus induction and plant regeneration in anther culture of cherry tomato “Mini – Carol”. *J. Kor. Soc. Hort. Sci.* 42: 32-37.
19. Qiufany, C., R. Afza, M. V. Duren & H. Brummer. 1997. Effects of Gamma irradiation and other factors on the induction of calli and regeneration of green plants in rice anther culture. *Acta Agri. Nucleate Sinica.* 11: 59-64.
20. Sharp, W. R., D. K. Dougall, & E. F. Paddock. 1971. Haploid plantlets and callus from immature pollen grains of *Nicotiana* and *Lycopersicon*. *Torrey Bot. Club. Bull.* 98: 219 -22.

...

:

21. Shtereva, L. A., N. A. Zagorska, B. D. Dimitrov, M. M. Kruleva & H. K. Oanh. 1998. Induced androgenesis in tomato (*Lycopersicon esculentum* Mill), II Factors affecting induction of androgenesis. *Plant Cell Repots*, 18: 312-317.
22. Summers, W.L., J. Jaramillo & T. Bailey. 1992. Microspore developmental stage and anther length influence the induction of tomato anther callus. *Hort. Science*. 27: 7, 838-840.
23. Summers, W. L. 1997. Haploid Plantlet production in tomato. In. S. M. Jain, S. K. Sopory and R.E. Veilleux (eds.). *In Vitro haploid production in higher Plants, Vol. 5*. Kluwer Academic Pub. 219-231.
24. Zagorska, N. A, M. D. Abadjieva, H. A. Georgiev, M. D. Abadzhieva, & Kh. A. Georgiev. 1982. Inducing regeneration in anther culture of tomatoes (*Lycopersicon esculentum* Mill). *Comptes Rendus de Academic Bulgare des Sciences*. 35: 97-100.
25. Zagorska, N. A., A. Shterva, B. D. Dimitrov & M. M. Kruleva. 1998. Induced androgenesis in tomato (*Lycopersicon esculentum* Mill), I. Influence of genotype on androgenetic ability. *Plant Cell Repots*. 17(12) 968-973.
26. Zamir, D., R. A. Jones & N. Kednar. 1980. Anther culture of male sterile tomato (*Lycopersicon esculentum* Mill.) mutants. *Plant Sci. Lett*. 17: 353-361.