

( )

**QTL**  
*(Brassica napus L.)*

//

*(Brassica napus L.)*

SSR ISSR RAPD DNA

QTL

QTL

QTL

QTL

/

QTL

QTL

QTL

/

QTL

QTL

QTL

QTL

QTL

QTL

SSR RAPD QTL ISSR

:

*(Brassica napus L.)*

(MAS)

( ) ( )

QTL ( )

(QTL)

( ) ( )

QTL ( b a)

FAD3

SSR ISSR RAPD ( )

( ) ( )

RAPD ( )

T099-5318-20

DH12075 QTL FAD3

F<sub>1</sub> ( )

T099-5318-20 AFLP

) S86-69 QTL

(FAD2/6 ) M4532 (FAD3/7

( )

FAD2

QTL

( )

(*B. juncea*)

RAPD ( )

/

QTL

( )

( )

QTL AFLP RAPD

DNA

DNA ( )

RFLP

DNA QTL

( ) ( )

RAPD

QTL :

ISSR RAPD  
1X TAE / /  
SSR ( )  
( ) ( )

ISSR

( )  
( ) ISSR RAPD  
( )

( ) Mapmaker/Exps

( )

LOD=

/ 1X PCR

( )

dNTP

MgCl<sub>2</sub>

QTL

(NEB)

Taq

/

QTLcartographer

QTL

(USA, Westchester, VWR)

( )

( )

DNA

DNA

QTL

LOD

)

PTC-200

QTL

( )

(

SSR

SSR

/ /  
/ /  
/ /

/ /  
/ /

( )

MgCl<sub>2</sub>

/ 1X PCR

Taq

/ dNTP

DNA

(NEB)

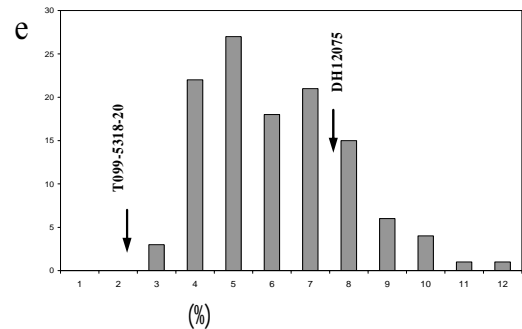
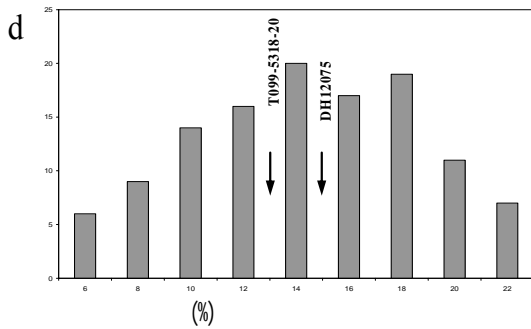
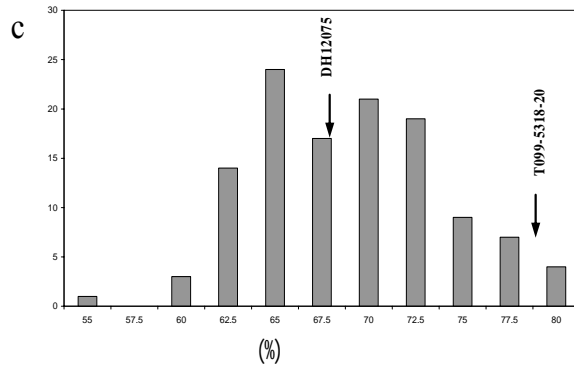
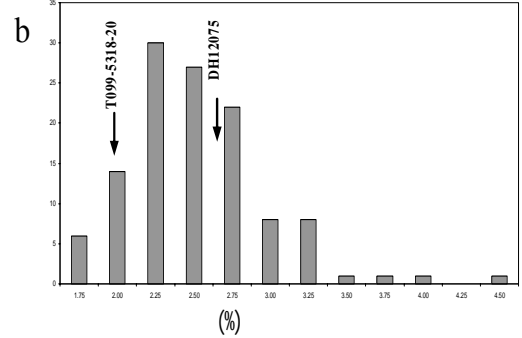
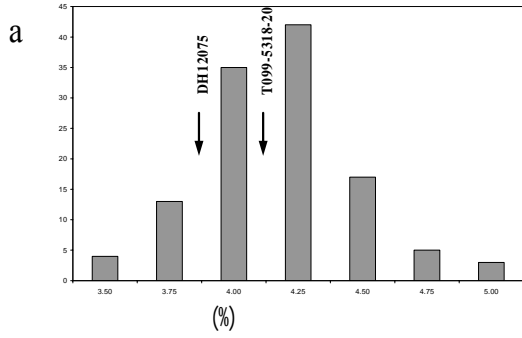
PTC-200

DNA

PCR

( )

( / )



(e)

(d)

(c)

(b)

(a)

DH12075 T099-5318-20

\*\*\* / / ns \*\* /  
 / ns \*\* / / \* / \*\*

: ns

\*\* /  
 / ns \*\* /

QTL :

ISSR

RAPD

SSR

( % )

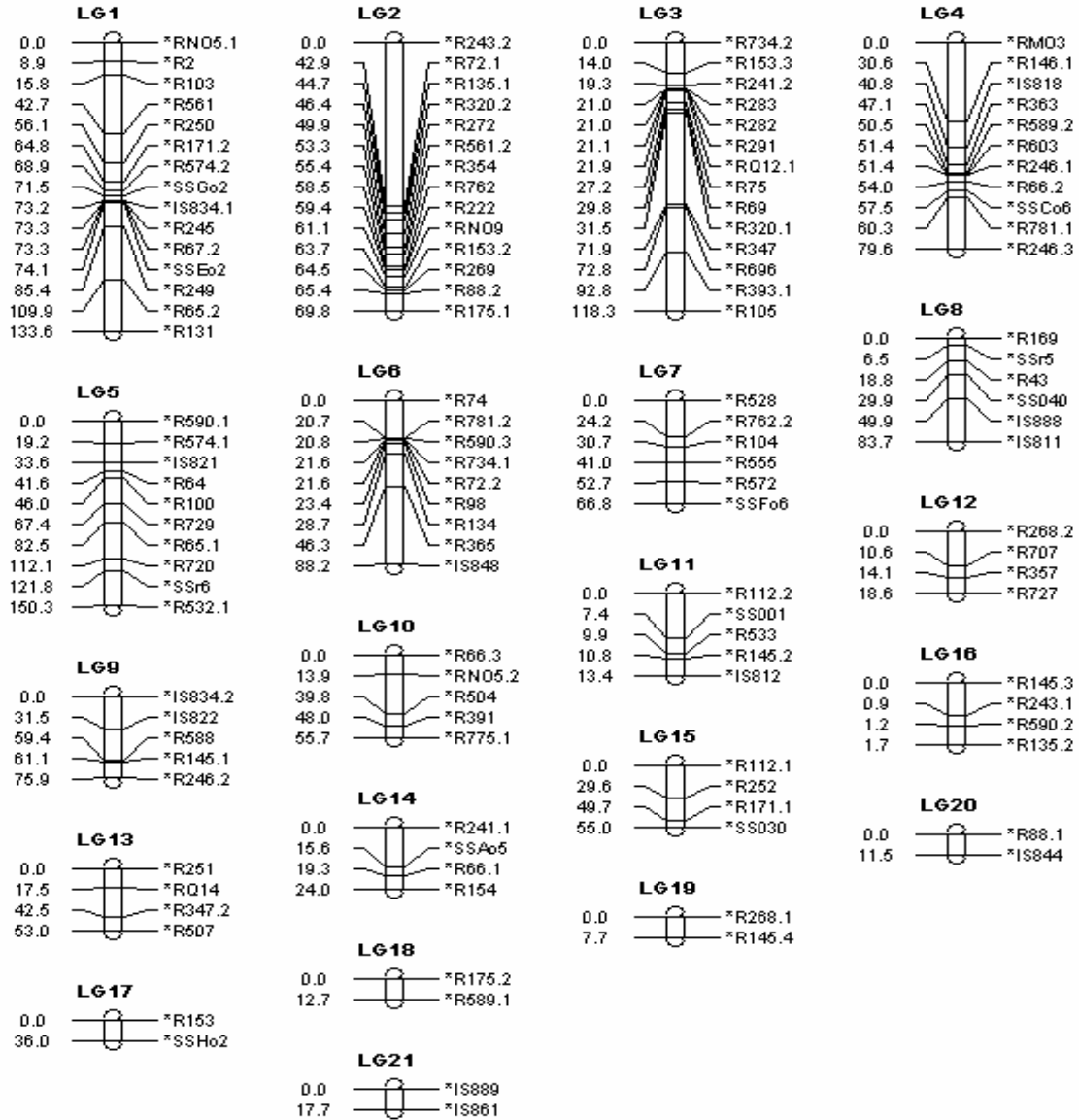
RAPD

( % )

SSR

( % )

ISSR



SS IS R . DH12075 T099-5318-20

SSR ISSR RAPD

QTL ( )

QTL /

QTL ( : )  
/ /

QTL

QTL .

QTL

QTL

*TR <sup>2</sup>	R <sup>2</sup>		LOD	( )
/	/	/	/	R354
/	/	/	/	R88.2
/	/	/	/	RQ14
/	/	/	/	R250
/	/	/	/	SSGo2
/	/	/	/	SSr6
/	/	/	/	R103
/	/	/	/	R561
/	/	/	/	R2
/	/	/	/	R707
/	/	/	/	R2
/	/	/	/	R103
/	/	/	/	R74
/	/	/	/	R528
/	/	/	/	R153

R<sup>2</sup> : \*

QTL .

QTL

QTL ( : )

R2

/

LOD QTL

QTL .

/

QTL .

R250

LOD

QTL .

QTL

R103

QTL .

LOD

/

QTL .

QTL

QTL

QTL

QTL .

... QTL :

SSR / / QTL LOD  
( )  
QTL

QTL

QTL ( ) ( )

DH12075

QTL (.)

QTL (SSr6) SSR

DH12075

QTL QTL ( )

QTL

( )

( )

QTL

/ QTL

T099-

RAPD

5318-20

SSR ISSR

QTL ( )

( ) ( ) % ( )

QTL

RAPD

QTL

/

QTL

(( ) % )

(( ) % )

QTL

DH12075

RAPD

QTL

SSR %

( )

( )

( ) ( ) QTL  
 QTL ( )  
 QTL QTL  
 QTL QTL  
 QTL  
 DH12075 QTL  
 )  
 (

## REFERENCES

1. Alrefai, R., T. G. Berke, & T. R. Rocheford. 1995. Quantitative trait loci analysis of fatty acid concentrations in maize. *Genome* 38: 894-901.
2. Barret, P., R. Delourme, M. Renard, F. Domergue, R. Lessire, M. Delseny & T.J. Roscoe. 1998. A rapeseed FAE 1 gene is linked to the El locus associated with variation in the content of erucic acid. *Theor. Appl. Genet.* 96: 177-186.
3. Basten, C. J. 1999. QTL cartographer manual. Available via <http://statgen.ncsu.edu/qtlcart/cartographer.html>.
4. Bornet, B. & M. Branchard. 2001. Non anchored inter simple sequence repeat (ISSR) markers: reproducible and polymorphic tools for genome fingerprinting. *Plant. Mol. Biol. Rep.* 19: 209-215.
5. Burns, M. J., S. R. Barnes, J. G. Bowman, M. H. E. Clarke, C. P. Werner & M. J. Kearsey. 2003. QTL analysis of an intervarietal set substitution lines in *Brassica napus*: (i) Seed oil content and fatty acid composition. *Heredity* 90: 39-48.
6. Chen, J. & W. D. Beversdorf. 1990. Fatty acid inheritance in microspore-derived populations of spring rapeseed (*Brassica napus* L.). *Theor. Appl. Genet.* 80: 465-469.
7. Csanádi, G., J. Vollmann, G. Stift & T. Lelley. 2001. Seed quality QTLs identified in a molecular map of early maturing soybean. *Theor. Appl. Genet.* 103: 912-919.
8. Ecke, W., M. Uzunova & K. Weibleder. 1995. Mapping the genome of rapeseed (*Brassica napus* L.). II. Localization of genes controlling erucic acid synthesis and seed oil content. *Theor. Appl. Genet.* 91: 972-977.
9. Gupta, V., A. Mukhopadhyay, N. Arumugam, Y. S. Sodhi, D. Pental, & A. K. Pradhan. 2004. Molecular tagging of erucic acid trait in oilseed mustard (*Brassica juncea*) by QTL mapping and single nucleotide polymorphisms in FAE gene. *Theor. Appl. Genet.* 108: 743-749.
10. Hu, J., C. Quiros, P. Arus, D. Struss & G. Robbelen. 1995. Mapping of a gene determining linolenic acid concentration in rapeseed with DNA based markers. *Theor. Appl. Genet.* 90: 258-262.
11. Hu, J., D. Li, D. Struss & C. Quiros. 1999. SCAR and RAPD markers associated with 18- carbon fatty acids in rapeseed, *Brassica napus*. *Plant. Breed.* 118: 145-150.
12. Jourden, C., P. Barret, D. Brunel, R. Delourme & M. Renard. 1996a. Specific molecular marker of the genes controlling linolenic acid content in rapeseed. *Theor. Appl. Genet.* 93: 512—518.
13. Jourden, C., P. Barret, R. Horvais, N. Foisset, R. Delourme & M. Renard. 1996. Identification of RAPD markers linked to the loci controlling erucic acid level in rapeseed. *Mol. Breed.* 2:61- 71.
14. Jourden, C., P. Barret, R. Horvais, R. Delourme & M. Renard. 1996b. Identification of RAPD markers linked to linolenic acid genes in rapeseed. *Euphytica* 90: 351-357.



15. Kosambi, D. D. 1944. The estimation of map distances from recombination values. *Ann. Eugen.* 12: 172-175.
16. Laga, B., J. Seurinck, T. Verhoye & B. Lambert. 2004. Molecular breeding for high oleic and low linolenic fatty acid composition in *Brassica napus*. *Pflanzenschutz-Nachrichten Bayer* 57:87-92.
17. Lander, E. S., P. Green, J. Abrahamson, A. Barlow, M. J. Daly, S. E. Lincoln & L. Newburg. 1987. MAPMAKER: an interactive computer package for constructing primary genetic linkage maps of experimental and natural populations. *Genomics* 1: 174-181.
18. Lionneton, E., S. Ravera, L. Sanchez, G. Aubert, R. Delourme & S. Ochatt. 2002. Development of an AFLP-based linkage map and localization of QTLs for seed fatty acid content in condiment mustard (*Brassica juncea*). *Genome* 45: 1203-1215.
19. Mahmood, T., U. Ekuere, F. Yeh, A. G. Good & G. R. Stringam. 2003. RFLP linkage analysis and mapping genes controlling the fatty acid profile of *Brassica juncea* using reciprocal DH populations. *Theor. Appl. Genet.* 107: 283-290.
20. Mayerhofer, R., V. K. Bansal, M.R. Thiagarajah, G. R. Stringam & A. G. Good. 1997. Molecular mapping of resistance to *Leptosphaeria maculans* in Australian cultivars of *Brassica napus*. *Genome* 40: 294-301.
21. Mokrani, L., L. Gentzittel, F. Azanza, L. Fitamant, A. Al-Chaarani, & A. Sarrafi. 2002. Mapping and analysis of quantitative trait loci for grain oil content and agronomic traits using AFLP and SSR in sunflower (*Helianthus annuus* L.). *Theor. Appl. Genet.* 106: 149-156.
22. Pilet, M. L., R. Delourme, N. Foisset & M. Renard. 1998a. Identification of loci contributing to quantitative resistance to blackleg disease, causal agent *Leptosphaeria maculans* (Desm.) Ces. et de Not., in winter rapeseed (*Brassica napus* L.). *Theor. Appl. Genet.* 96: 23-30.
23. Pilet, M. L., R. Delourme, N. Foisset & M. Renard. 1998b. Identification of QTL involved in field resistance to light leaf spot (*Pyrenopeziza brassicae*) and blackleg resistance (*Leptosphaeria maculans*) in winter rapeseed (*Brassica napus* L.). *Theor. Appl. Genet.* 97: 398-406.
24. Quijada, P. A., I. J. Maureira & T. C. Osborn. 2004. Confirmation of QTL controlling seed yield in spring Canola (*Brassica napus* L.) hybrids. *Molecular breeding* 13: 193- 200.
25. Reiter, R. S., G. K. J. Williams, K. A. Feldmann, J. A. Rafalski, S. V. Tingey & P. A. Scolink. 1992. Global and local genome mapping in *Arabidopsis thaliana* by using recombinant inbred lines and random amplified polymorphic DNA. *Proc Natl Acad Sci U.S.A.* 89: 1477-1481.
26. Sharma, R., R. A. K. Aggarwal, R. Kumar, T. Mohapatra & R. P. Sharma. 2002. Construction of an RAPD linkage map and localization of QTLs for oleic acid level using recombinant inbreds in mustard (*Brassica juncea*). *Genome* 45: 467-472.
27. Snowdon, R. J. & W. Friedt. 2004. Molecular markers in *Brassica* oilseed breeding: current status and future possibilities. *Plant Breeding* 123: 1-8.
28. Somers, D. J., K. R. D. Friesen & G. Rakow. 1998. Identification of molecular markers associated with linoleic acid desaturation in *Brassica napus*. *Theor. Appl. Genet.* 96: 897-903.
29. Suwabe, K., H. Iketani, T. Nunome & T. Kage. 2002. Isolation and characterization of microsatellites in *Brassica rapa* L. *Theor. Appl. Genet.* 104: 1092-1098.
30. Tanhuanpää, P. K. & A. Schulman. 2002. Mapping of genes affecting linolenic acid content in *Brassica rapa* ssp. *oleifera*. *Mol. Breed.* 10: 51-62.
31. Tanhuanpää, P. K., J. P. Vilkki & H. J. Vilkki. 1995. Association of a RAPD marker with linolenic acid concentration in the seed oil of rapeseed (*Brassica napus* L.). *Genome*,38:414-416.
32. Tanhuanpää, P. K., J. P. Vilkki & H. J. Vilkki. 1996. Mapping of a QTL for oleic acid concentration in spring turnip rape (*Brassica rapa* ssp. *oleifera*). *Theor. Appl. Genet.* 92: 952-956.
33. Thies, W. 1974. New methods for the analysis of rapeseed constituents. *Proc. 4<sup>th</sup> Rapeseed Congr. GGIRC, Giessen*, 275-282.
34. Williams, J., A. Kubelik, K. Livak, J. Rafalski & S. Tingey. 1990. DNA polymorphism amplified by arbitrary primers are useful as genetic markers. *Nucleic Acids Res.* 18: 6531-6535.
35. Zeng, Z. 1994. Precision mapping of quantitative trait loci. *Genetics* 136: 1457-1468.

36. Zhao, J. & J. Meng. 2003. Genetic analysis of loci associated with partial resistance to *Sclerotinia sclerotiorum* in rapeseed (*Brassica napus* L.). *Theor. Appl. Genet.* 106: 759-764.
37. Zietkiewicz, E., A. Rafalski & D. Labuda. 1994. Genome fingerprinting by simple sequence repeat (SSR)-anchored polymerase chain reaction amplification. *Genomics* 20: 176-183.