

()

//

() ()

(PIC)

PIC

. /
(/)

. /
(/)
/

/

UPGMA

:

.()

.()

.()

.()

.()

()

.()

1. Simple Sequence Repeats

.()

:

() ()
)
() () ()
) () ()
() / :

/ ()
/
/ /
TouchGene® Gradient Thermal Cycler / /
) Tooldown ()

() / /

(
x) x

() ()

()
) ()
TBE(1x) (Bio Rad, Sequi-Gen GT

()

()

() (Promega)

) / (
 /
 / (DI)
 ()
 ()
 / /
 / / ()
 (Gt)n
 ()
 ()
 ()
 /
 /
 ()
 (/)

() ()
 Bio Rad laboratories) Quantity one v. /
 () (Hercules, CA USA
 ()
) (PIC) () (DI)¹
 (
 j Pj) $DI (pic) = 1 - \sum (Pj)^2$
 (
 DI PIC ()
 () NTSYS-pc v. / UPGMA³

1. DI= Diversity Index
 2. PIC= Polymorphism Information Content
 3. Unweighted Pair Group Means Analysis (UPGMA)

((DI) / (/))

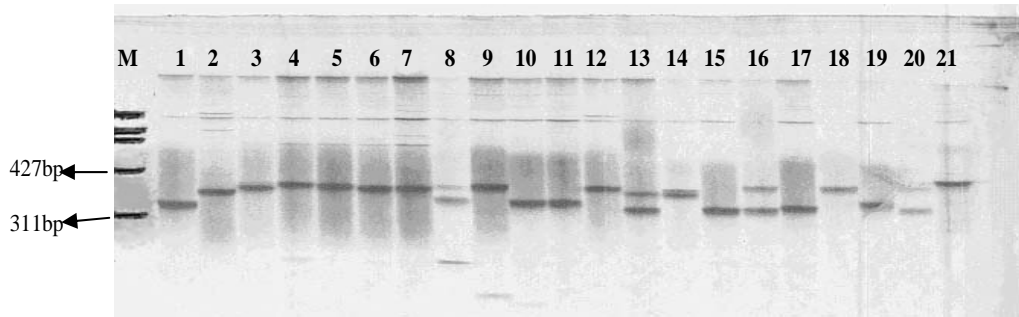
			DI (/)
Xgwm	BL	(CA)	/
Xgwm	BL	(GT)	/
Xgwm	BL	(GA)	/
Xgwm	BS	(GA)	/
Xgwm	DS	(CT) (GT)	/
Xgwm	DL	(GT)	/
Xgwm	BS	(CA)	/
Xgwm	BL	(GA)	/
Xgwm	AS	(GA)>	/
Xgwm	DL	(GA)	/
Xgwm	BS	(CT) (CC)(CT)	/
Xgwm	AL	(GT)	/
Xgwm	DS	(CT)	/
Xgwm	DL	(GT)	/
Xgwm	BS	(CT)	/
Xgwm	DS	(CT)	/
Xgwm	AL	(GA)	/
Xgwm	DC	(GA)	/
Xgwm	AL	(GA)	/
Xgwm	AS	(CT) (T) (CT)	/
Xgwm	BL	(CT) (CA)	/
Xgwm	BS	(CA) (A)(CA)	/
Xgwm	BL	(GA)	/
Xgwm	DC	(GA)	/
Xgwm	7DS	(CT) (CA)	/
Xgwm	D	(TC) ((T) (CT)	/
Xgwm	AS	(GT)	/
Xgwm	DL	(CT)	/
Xgwm	BS	(GA) (GAA)	/
Xgwm	BS	(CT) (GA)	/
Xgwm	BS	(CT)	/
Xgwm	DL	(CT) (GA)	/
Xgwm	BL	(CT) (GA)	/
Xgwm	BS	(CA)	/
Xgwm	AC	(CT) (CTT)	/
Xgwm	BS	(CA) (GA)	/

Xgwm

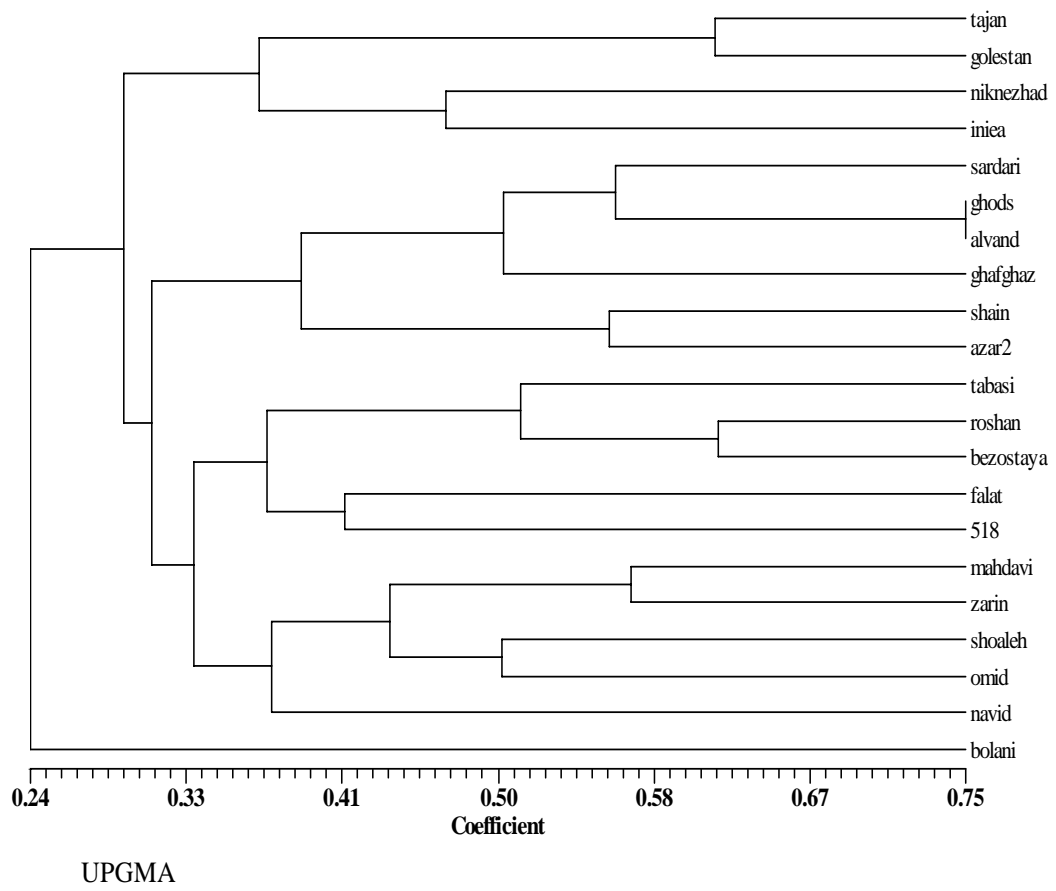
BS

(GT)

/



(QX174 M) Xgwm



()

/

/

/

/

()

()

()

()

(/)

:
:
:
:
:

REFERENCES

1. Agrama, H. & M. R. Tuinstra. 2003. Phylogenetic diversity and relationship among sorghum accessions using SSRs and RAPDs. *African Journal of Biotechnology*, 2(10): 334-340.
2. Akkaya, M. S., A. A. Bhagwat & P. B. Cregan. 1992. Length polymorphism of simple sequence repeats of DNA in soybean. *Genetics*, 132: 1131-1139.
3. Bryan. G. J., A. J. Collins., P. Stephanson., A. Orry., J. B. Smith & M. D. Gale. 1997. Isolation and characterisation of microsatellite from hexaploid bread wheat. *Theor. Appl. Genet.*, 94: 557-563.
4. Christiansen. M. J., S. B .Anderson & R. Ornz. 2002. Diversity changes in an intensively bread wheat germplasm during the 20th century. *Molecular Breeding*, 9:1-11.
5. Dellaporta, S.L., J. Wood & J. B. Hicks. 1993. A plant DNA minipreparation: version II. *Plant Mol. Biol. Rep.*, 1: 19.
6. Eujayl. I., M. E. Sorrells., M. Baum., P. Wolters & W. Powel. 2002. Isolation of EST-derived microsatellite markers for genotyping the A and B genomes of wheat. *Theor. Appl. Genet.*, 104:399-407
7. Fahima, T., M. Roder, A. Grama & E. Nevo, 1998 Microsatellite DNA polymorphism divergence in *Triticum dicoccoides* accessions highly resistant to yellow rust. *Theor. Appl. Genet.*, 96:187-195.
8. Gupta P. K., R. K. Varshney, P. C. Sharma & R. Ramesh, 1999, Molecular markers and their application in wheat breeding. *Plant Breeding*, 118: 369-390.
9. Gupta. P. K., H. S. Balyan., K. J. Edwards, P. Isaac., V. Korzun., M. Roder., M. F. Gautier., A. R Schlatter., J. Dubcovsky., R. C. Delapena., M. Khairallah., G. Penner., M. J. Hayden., P. Sharp., B. Keller., R. C. C. Wang., J. P. Hardouin., P. Jack & P. Leroy. 2002. Genetic mapping of 66 new microsatellite (SSR) loci in bread wheat. *Theor Appl. Genet.*, 105: 413-422

10. Hai-Feizho, Zhong-Wen Xie & Ge. Song. 2003. Microsatellite analysis of genetic diversity and population genetic structure of wild rice (*Oryza rufipogon griff*) in China. *Theor. Appl. Genet.*, 107: 332 – 339
11. Halton, T. A. 2001. Plant genotyping by analysis of microsatellite. In R. J. Henry(Ed). *Plant genotyping, The DNA fingerprinting of plant*. pp: 15-29.
12. Hokanson, S. C., A. K. Szewc-McFadden., W. F. Lamboy & J. R. McFerson. 1998. Microsatellite (SSR) markers reveal genetic identities, genetic diversity and relationships in a *Malus × domestica* borkh core subset collection. *Theor. Appl. Genet.*, 97: 671-683
13. Ma, Z. Q., M. Roder & M. E. Sorrelis, 1996. Frequencies and sequence characteristics of di-, tri-, and tetra-nucleotide microsatellites in wheat. *Genome*, 39:123-130
14. Maccaferri. M., M.C. Sanguineti, P. Donini & R. Tuberosa. 2003. microsatellite analysis reveals a progressive widening of the genetic basis in the elite durum wheat germplasm. *Theor. Appl. Genet.*, 107:783-797.
15. Nei, N & W. Li. 1979. Mathematical model for studying genetic variation in terms of restriction endonuclease. *Proc. Natl. Acad. Sci. USA*, 76:5269–5273.
16. Pestsov. E., V. korzun., N. P. Goncharov., K. Hammer., M. W Ganal & M. S. Roder. 2000. Microsatellite analysis of *Tauschii* germplasm. *Theor. Appl. Genet.*, 101: 100-106
17. Plaschke, J., M. W. Ganal & M. S. Roder. 1995. Detection of genetic diversity in closely related bread wheat using microsatellite markers. *Theor. Appl. Genet.*, 91:1001-1007.
18. Powell,W., M. Morgante., C. Andre., M. Hanafey., J. Vogel., S. Tingey & A. Rafalsky. 1996. The comparison of RFLP, RAPD, AFLP and SSR (microsatellite) markers for germplasm analysis. *Molecular Breeding*, 2: 225–238.
19. Prasad. M, R. K. Varsheny, J. K. Roy, H. S. Balyan & P. K. Gupta. 2000. The use of microsatellite for detection DNA polymorphism, genotype identification and genetic divesity in wheat. *Theor. Appl. Genet.*, 100: 584-592.
20. Röder. M. S., J. Plaschke., S. U. Konig., A. Borner., M. E. Sorrells., S. D. Tanksley & M. W. Ganal. 1995. Abundance, variability and chromosomal location of microsatellites in wheat. *Mol. Gen. Genet.*, 246: 327-333.
21. Röder. M. S., V. Korzun., K. Wendehake., J. Plaschke., M. H. Tixier, P. Leroy & M. W. Ganal. 1998. A microsatellite map of wheat. *Genetics*, Vol. 149: 2007-2023.
22. Rohlf, F. J. 2000. NTSYS-pc: numerical taxonomy and multivariate analysis system, version 2.1. Exeter Software: Setauket, NY.
23. Saghai Maroof. M. A., R. M. Blyashev., G. P. Yang., Q. Zhang & R. M. Allera. 1994. Extraordinarily polymorphic microsatellite DNA in barely: species diversity, chromosomal location and population dynamics. *Pro. National Acad. Sci. USA*, 91: 5466-5470.
24. Senior, M. L. & M. Heun, 1993 Mapping maize microsatellites and polymerase chain reaction confirmation of the targeted repeats using a CT Primer. *Genome*, 36: 884-889.
25. Stachel M., T. Lelley., H. Grausgruber & J. Vollmann. 2000. Application of microsatellites in wheat (*Triticum aestivum* L.) for studying genetic differentiation caused by selection for adaptation and use. *Theor. Appl. Genet.*, 100: 242–248.
26. Tautz, D. & M. Renz. 1984. Simple sequence are ubiquitous repetitive components of eukaryotic genomes. *Nucleic Acids Res.*, 12: 4127–4137.
27. Wu, K. S. & S. D. Tanksley. 1993. Abundance, polymorphism and genetic mapping of microsatellites in rice. *Mol. Gen. Genet.*, 241: 225–235.
28. www.promega.com, Silver Sequence™ DNA Sequencing System Instructions For USA of Products Q4130 and Q4131.

