

()

//

KSC700

()

KSC647 KSC704

()

%

(SP1042 OSSK602 OSSK713)

:

.()

.()

.()

SC704

.()

.(Dudley, 1988)

()

×

()

.()

(KSC704 KSC700 KSC647)

SC704

- | | |
|-------------|-------------|
| 1. OSSK 713 | 2. OSSK 602 |
| 3. OSSK 596 | 4. OSSK 617 |
| 5. OSSK 644 | 6. OSSK 659 |
| 7. OSSK 552 | 8. ALPOS |
| 9. BC 678 | 10. BC 666 |
| 11. BC582 | 12. BC 682 |
| 13. BC 554 | 14. BC 5982 |
| 15. SP1042 | 16. SP1043 |
| 17. DUNAV | 18. KSC700 |
| 19. KSC647 | 20. KSC704 |

.()

.()

))

((

.()

%

.()

SC647)

(SC700

.()

SC704

()

SC700

										%
										%
										%
/ **	/ **	/ **	/ ns	/ **	/ **	/ **	/ **	/ **	/ **	/ **
/	/	/	/	/	/	/	/	/	/	()
/ **	/ **	/ **	/ *	/ **	/ **	/ **	/ **	/ **	/ **	/ **
/ ns	/ ns	/ ns	/ ns	/ **	/ **	/ *	/ **	/ ns	/ ns	
/ **	/ **	/ **	/ **	/ **	/ **	/ **	/ **	/ **	/ **	/ **
/ *	/ **	/ **	/ **	/ ns	/ **	/ ns	/ **	/ **	/ ns	
/ *	/ **	/ ns	/ ns	/ ns	/ ns	/ **	/ **	/ **	/ ns	X
/	/	/	/	/	/	/	/	/	/	
										%CV
: ns										: ** *

										%)
										%)
										%)
/ a	/ a	/ a	/ a	/ b	b	/ a	/ a	/ b	/ b	
/ b	/ b	/ b	/ a	/ a	a	/	/ b	/ b	/ a	/ a
cd	/ bcde	/ ab	/ bcde	/ bcde	/ a bcde	/ cd	/ fgh	/ a	/ a	OSSK713
bcd	/ bcde	/ bcdefg	/ bcde	/ abc	/ a	/ abcd	/ efgh	/ abc	/ ab	OSSK 602
bcd	cdef	/ abcde	/ abc	/ abcde	/ bcdef	/ ab	/ fgh	/ abc	/ ab	OSSK596
bcd	/ cdef	cdefg	/ bcde	/ abc	/ abcd	/ a	/ gh	/ ab	/ ab	OSSK617
bcd	/ abcd	abcd	/ ab	/ cdef	/ defg	/ cd	cd	/ abc	/ bc	OSSK644
bcd	/ abc	/ abcd	/ bcd	/ ef	/ defg	/ cd	/ def	/ bc	/ cd	OSSK659
de	ef	/ fg	ef	/ cdef	efgh	/ abc	/ fgh	/ abc	/ abc	OSSK552
e	/ abcde	/ h	/ g	/ g	/ I	/ e	/ j	/ d	/ d	ALPOS
bcd	/ cdef	/ abc	/ cde	/ abcd	/ cdefg	/ cd	/ efgh	/ abc	/ abc	BC678
bc	/ def	/ bcdefg	/ de	/ abcd	/ bcdef	/ bcd	/ efgh	/ a	/ ab	BC666
bcd	/ bcde	/ fg	/ cde	/ def	/ abcd	/ cd	/ h	/ a	/ ab	BC582
bc	/ cdef	/ defg	/ f	/ f	ab	/ d	/ i	/ bc	/ cd	BC682
bcd	/ cdef	/ g	/ cde	/ cdef	/ hi	bcd	/ bc	/ abc	/ bc	BC554
de	/ def	fg	/ ef	/ ef	gh	/ cd	/ de	/ abc	/ abc	BC5982
a	/ abcd	/ a	/ a	/ abc	/ abc	/ abcd	/ de	/ a	/ ab	SP1042
bc	/ cdef	fg	/ de	/ abcde	/ abcdef	/ abcd	/ def	/ abc	/ abc	SP1043
b	/ a	abc	/ abcd	/ cdef	/ defg	/ cd	/ cd	/ abc	/ abc	DUNAV
bc	/ def	/ abcdef	ef	/ ab	/ fgh	/ abc	/ b	/ abc	/ abc	KSC700
bcd	f	/ efg	/ bcde	/ a	/ hi	/ abcd	/ a	/ abc	/ abc	KSC647
bcd	/ ab	/ abcd	/ cde	/ abc	/ cdefg	/ bcd	/ efgh	/ c	/ abc	KSC704

:

%

()

.()

.()

(SC700) (SC647)

/ / ()

/) (/)

() (%

(OSSK 617)

.()

.() (OSSK 596)

SC647 SC700

.()

(/ /) SC700 SC647 ()

(SP1042)

.()

%

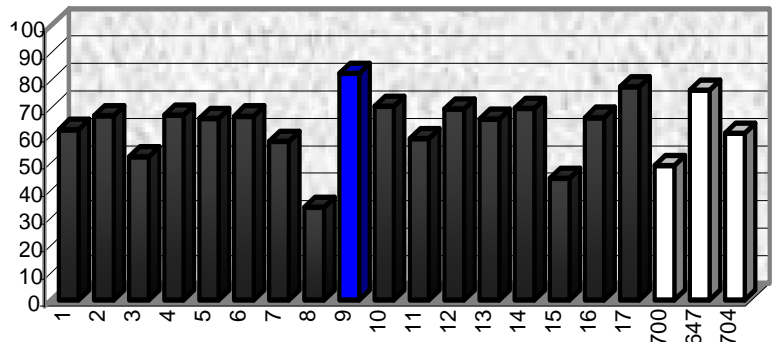
.()

(SP1042)

%

/

.()



(Perez- Vela Squez et al., 1995)

(SC700) (SP1042) (ALPOS) % / (OSSK602)

(% /) (DUNAV)

/ SC704

704

704

(/)

() SC647

() () OSSK 552

(BC 678)

(DUNAV)

BC OSSK SP

%

BS16

ETO

()

/ **	/ **	/ **	/ **	/ **	/ ns
/ **	/ ns	/ **	/ *	/ **	
/ **	/ **	/ **	/ **		
/ **	/ ns	/ **			
