

( )

//

(... )

)

.(

.( )

.( )

.( )

( )

- 
1. Transcritical Flow
  2. Hydraulic Shock
  3. State Variable

/ %

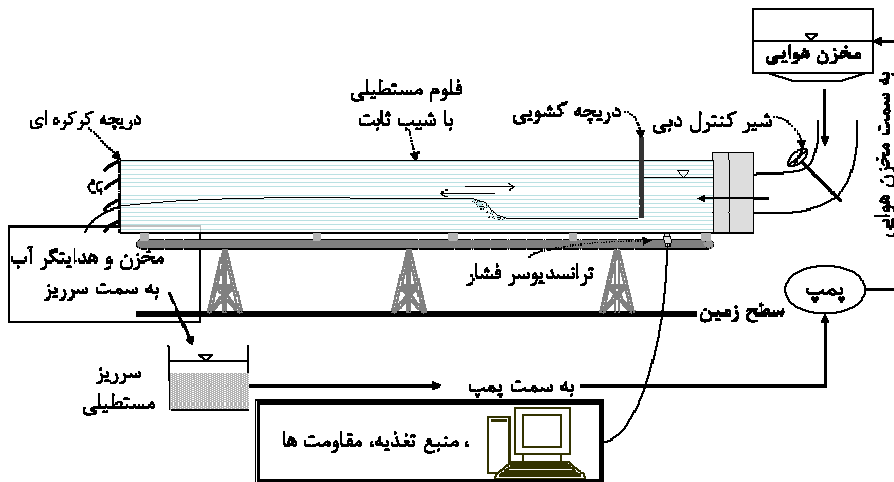
A/D  
)

Advantech PCL818

.)

- 3. Tail Gate with Rotating Flaps
- 4. Pressure Transducer
- 5. Full Scale
- 6. Analogue/Digital Cart

- 1. Artificial Neural Network (ANN)
- 2. Genetic Algorithm (GAs)



:

( )

( )

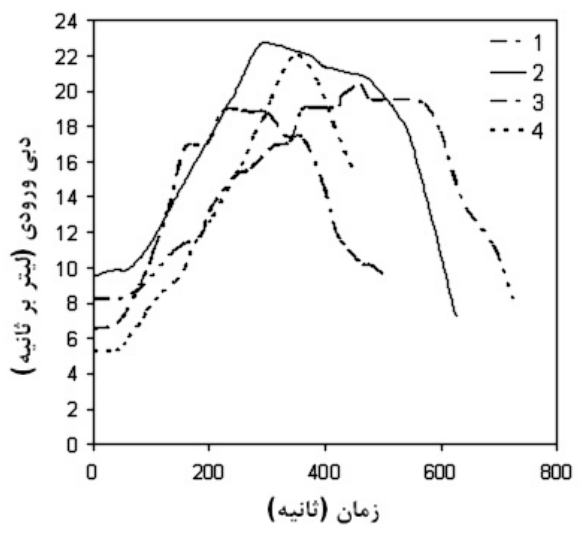
( )

)

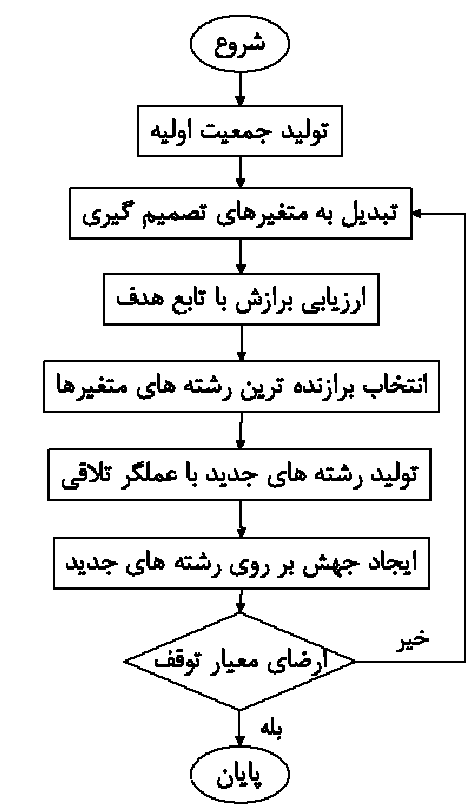
(

:

- 
1. Perceptron
  2. Transfer Function
  3. Feed Forward
  4. Multilayer Perceptron (MLP)
  5. Back Propagation Error
  6. Reproduction

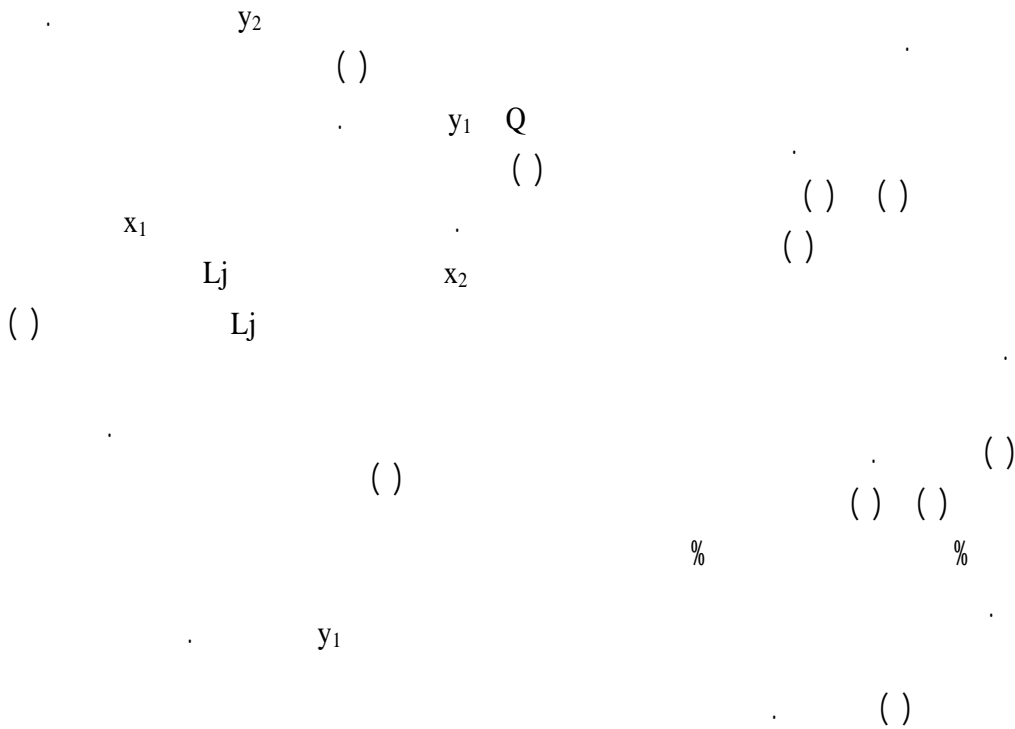


- 4. Training
- 5. Testing



- 1. Cross over
- 2. Mutation
- 3. Fitness Function

Q, y <sub>1</sub>	y <sub>2</sub>
Q, y <sub>2</sub> , x <sub>1</sub>	x <sub>2</sub> , L <sub>j</sub>
Q, F <sub>1</sub>	x <sub>1</sub>



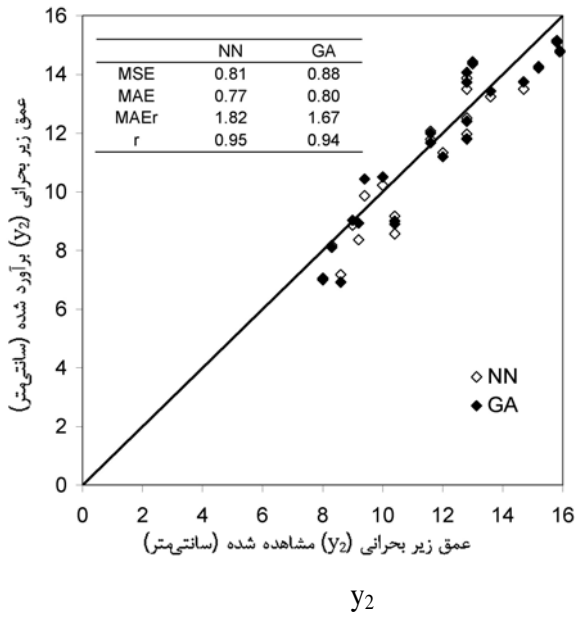

---

Time	Q	y <sub>1</sub>	y <sub>2</sub>	x <sub>1</sub>	x <sub>2</sub>	L <sub>j</sub>
(S)	(l/S)	(cm)	(cm)	(cm)	(cm)	(cm)

---

1. Epochs
2. Randomization

( ) ( ) ( )



( )

( )

%

( ) ( )

NN

GA

(MAE)  
(r)

(MSE)  
(MAEr)

( )

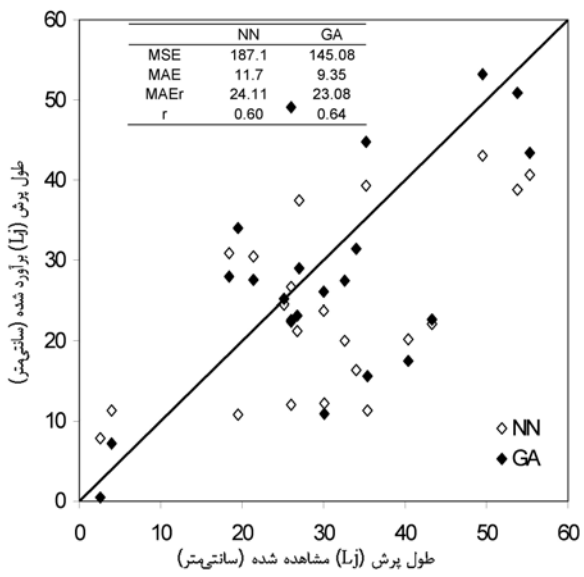
( )

( )

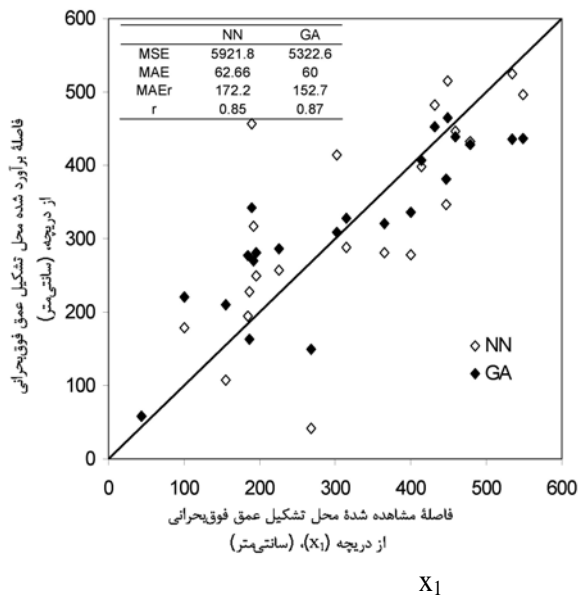
y<sub>2</sub>

y<sub>2</sub>

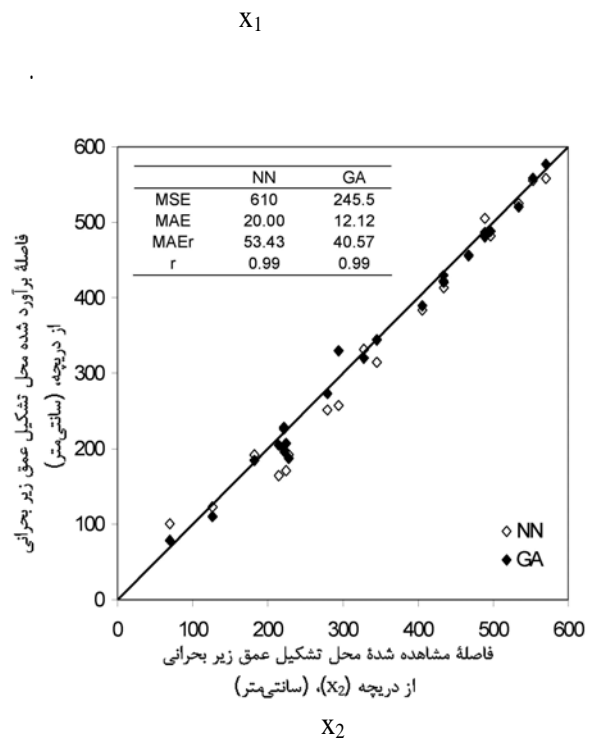
1. Mean Square Error
2. Mean Absolute Error
3. Maximum Absolute Error
4. Linear Correlation Coefficient
5. Uniform Mutation
6. Processing Element (PE)



$X_1$   
 $X_2$

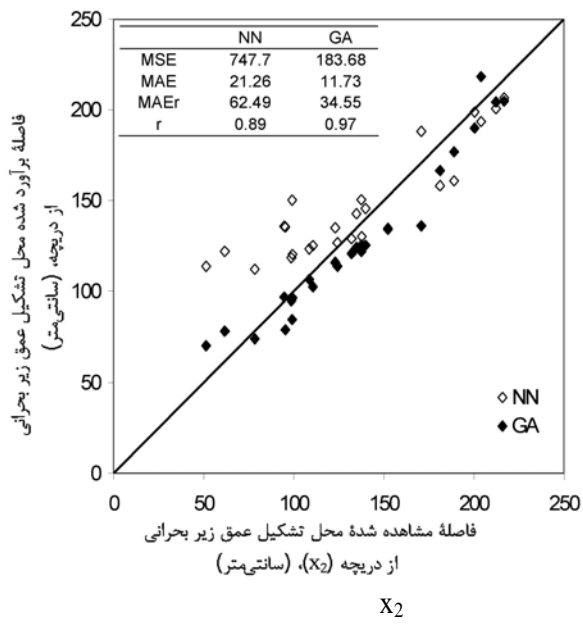


$(F_1 \quad Q)$   
 $( \quad )$   
 $( \quad )$



$( \quad )$   
 $( \quad )$   
 $( \quad )$



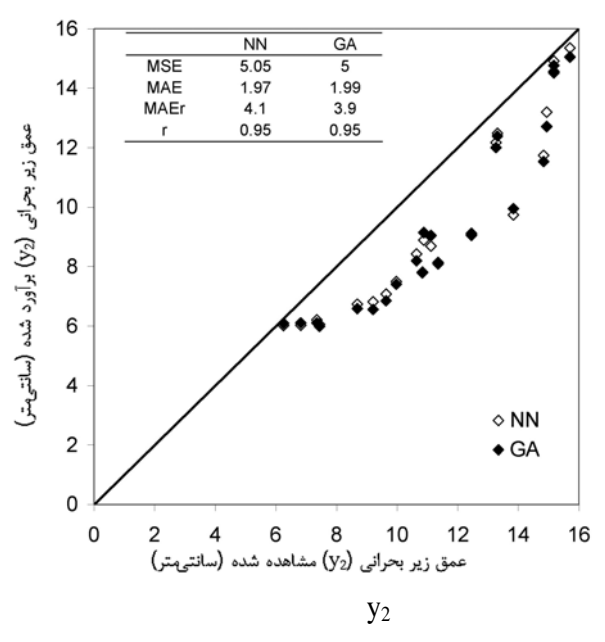


$y_2$  ( ) ( )

$x_2$  ( ) (Lj)

( )

( ) ( $x_1$ ) ( )



( )

( )

( )

( )

( ) ( )

( ) ( )

$y_2$   $y_1$

## REFERENCES

(ICSS-POM)

3. Fennema, R.J., & M.H. Chaudhry. 1990. Explicit methods for 2-D transient free-surface flows, *J.hydr.Engng. ASCE*, Vol.116(8): 1013-1034.
4. Fennema, R.J., & M.H. Chaudhry. 1986. Explicit numerical scheme for unsteady free-surface flows with shocks, *Water resource research*, Vol.22 (13): 1923-1930.
5. Goldberg, D.E. 1989. *Genetic algorithm in search, optimization and machine learning*, Addison-Wesley, reading, MA, 412 pp.
6. Jin, M., & D.L. Fread. 1997. Dynamic flood routing with explicit and implicit numerical solution scheme, *J.hydr.Engng. ASCE*, Vol.123(3):166-173.
7. Martin, C.S., & J.J. Zovne. 1971. Finite-Difference simulation of bore propagation, *Journal of Hydraulic division*, HY7, July: 993-1010.
8. Meselhe, E.A., & F.M.Holly. 1997. Invalidation of preissmann for transcritical flow, *J.hydr.Engng. ASCE*, Vol.123(7): 652-655.
9. Meselhe, E.A., F. Sotiropoulos, & F.M. Holly. 1997. Numerical simulation of transcritical flow in open channel, *J.hydr.Engng. ASCE*, Vol.123(9): 774-783.
10. Tseng, M.H. 1999. Verification of 1-D transcritical flow model in channels, *Proc. Natl. Counc. ROC(A)*, Vol.23(5): 654-664.
11. Zhang, W., & W. Summer. 1999. Computation of rapidly varied unsteady flows in open channels and comparison with physical model and field experiment, 28th IAHR congress, Graz, Austria.