

()

*

(/ / : / / :)

ANSYS 5.6

R2 = /

« » « »

« » « »

« »

/

/

« »

:

()

()

()

()

(:)

« »

()

(

% ()

()

()

()

()

)

(

()

()

(:

)

(

(

(

()

()

()

()

* *

:()

$$\sigma_1 - \sigma_2 = \frac{Nf_\sigma}{t} \quad ($$

$$f_\sigma = \frac{F}{N \times W}$$

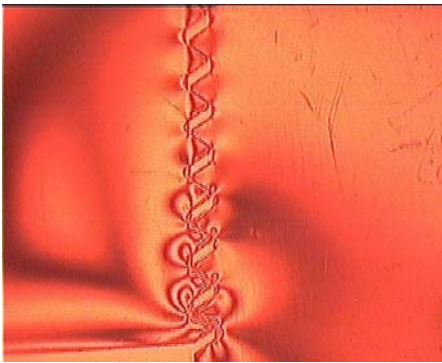
:() f_σ

t (MPa) σ_2 σ_1
 N (mm)
 f_σ ()

W (N) F
 (mm)

$\frac{F}{A}$ σ_1 $\sigma_2 =$ ()
 f_σ

/ MPa



()

Quadrilateral 8

Plane 82 node

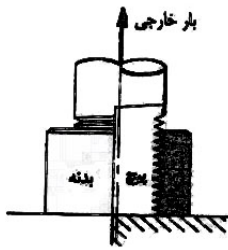
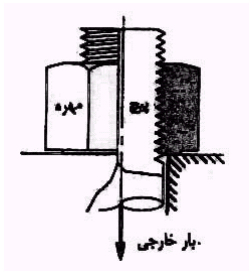
mm	kN/mm	MPa
/	/	/

)

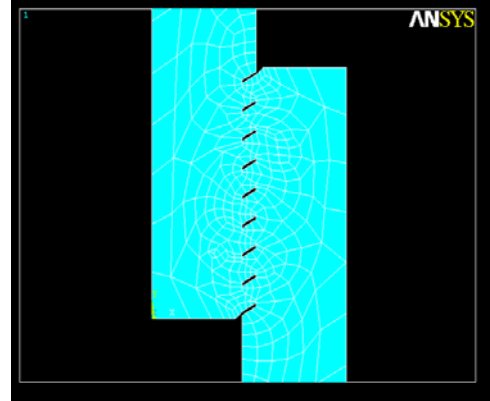
(

CNC

(Sparse)



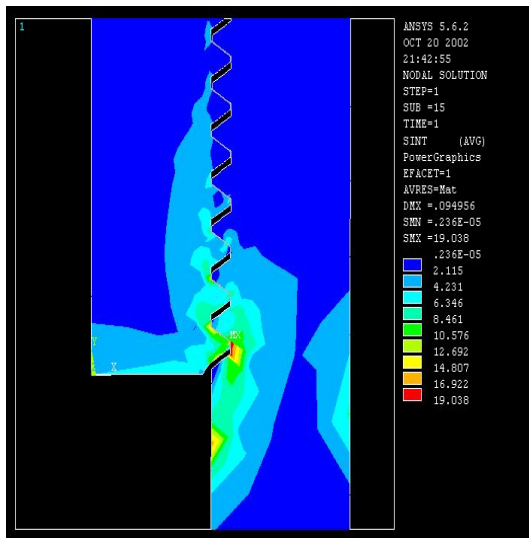
()



ANSYS. 5.6

(Targe 169)

(Conta 172)



()

1 M Pa

X

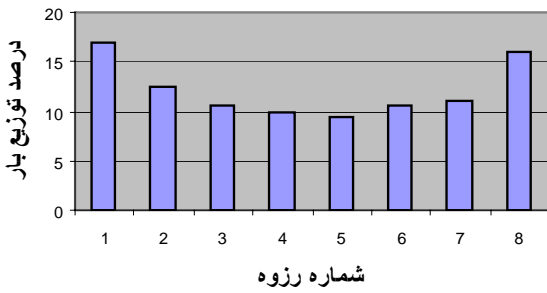
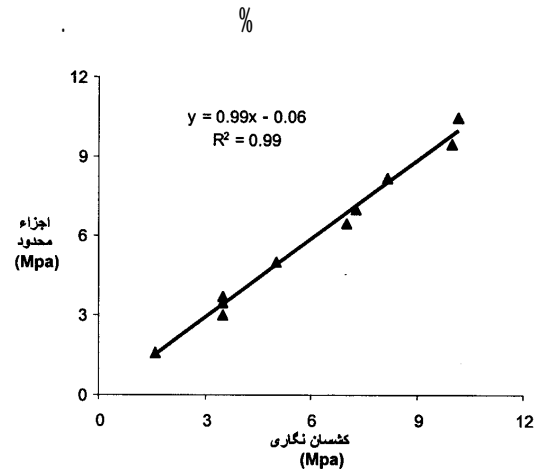
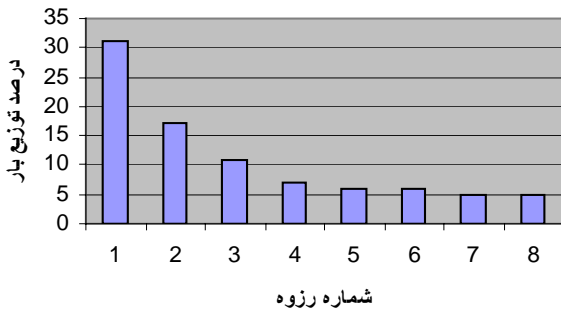
()

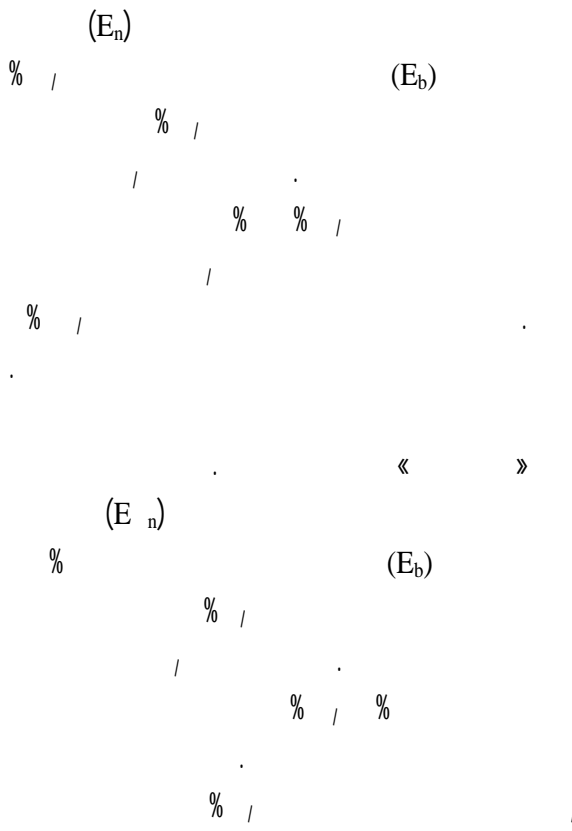
(.)

« » « »

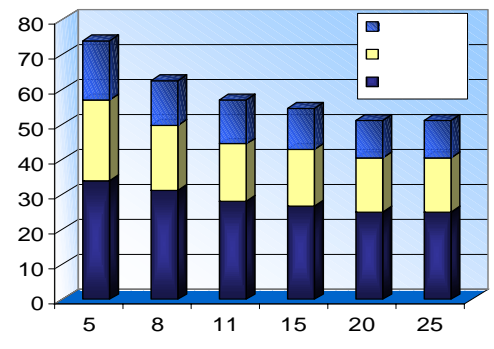
»

«

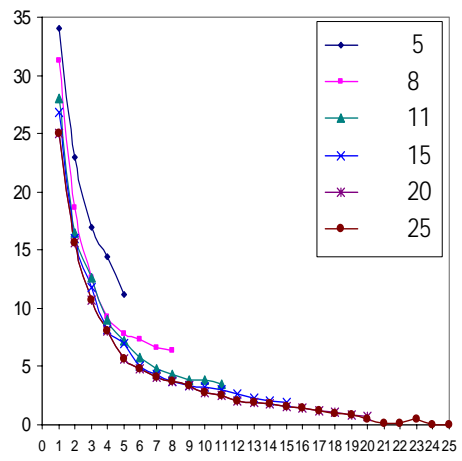
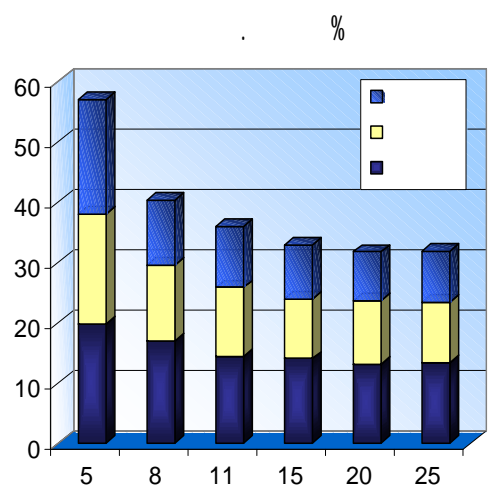




« »



« »



« »

« »

(E_b)

«

»

(E_n)

/

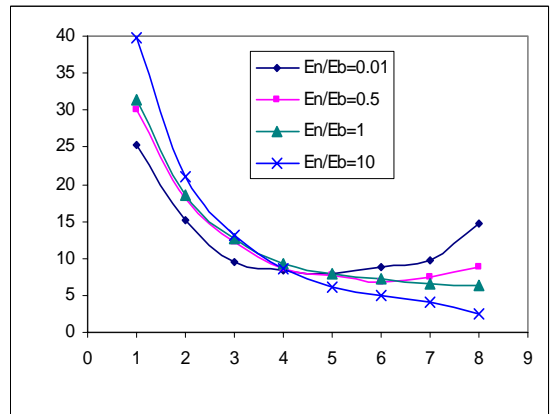
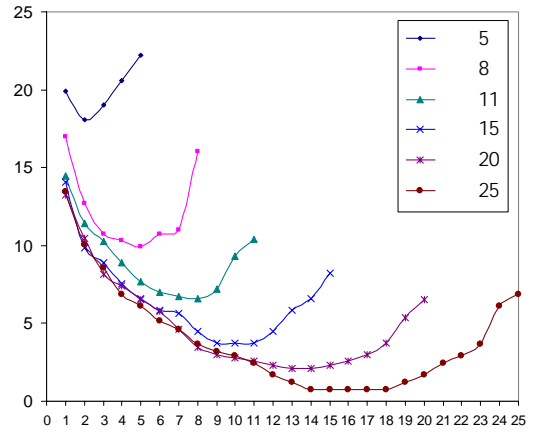
/

»

«

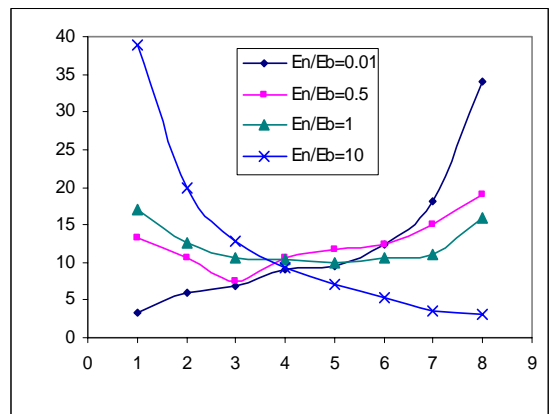
«

»



«

»



«

»

//

REFERENCES

2. Bradley, T.L., T.J., Lardner, & B.B. Mikic. 1971. "Bolted joint interface pressure for thermal contact resistance," Trans. ASME. Ser. E.J. APPL. Mech., 38(2), 542-545.
3. Bretl, J.L., & R.D., Cook. 1979. "Modeling the load transfer in threaded connections by the finite element method", International Journal for Numerical Methods in Engineering, Vol. 14, No. O, PP. 617-624, February.
4. Dally J.W. & W.F. Riley. 1978. Experimental Stress Analysis, 2nd Edition, New York, Mc Grow Hill Book Company.
5. Englund, R.B. & D.H. Johnson. 1999. "A finite element analysis study of non – linear behavior in a bolted connection", ASME. International Mechanical Engineering Congress and Exposition, Nashville, TN, 15.
6. Englund, R.B. & D.H. Johnson. 1997. "Finite element analysis of a threaded connection compared to experimental and theoretical research", Journal of Engineering Technology, Vol., 14, No. 2, pp. 42-47.
7. Johnson, D.H., & B. R. Englund, . 2000. "Three-dimensional modeling of a bolted connection", 9th International ANSYS conference.
8. Sawa, T., H. Kumano & T. Morohoshi. 1996. "The Contact stress in a bolted joint with a threaded bolt" Journal of experimental mechanics.
9. Wang, W., & K.M., Marshek, . 1995. "Determination of the load distribution in a threaded connector having dissimilar materials and varying thread stiffness, "Journal of engineering for industry, Vol 117, pp1.
10. Yazawa, S., & K., Hongo. 1988. "Distribution of load in the screw thread of a bolt- nut connection subjected to tangential forces and bending moments." JSME International journal, Series I, Vol. 31, No.2, pp. 174-180.