

( )

***Scaeva albomaculata* (Dip.: Syrphidae)**

//

*Scaeva albomaculata*

±

*Myzus persicae* (Sulzer)

(Macqaurt)

/ / /

/

( / )

/

*S. albomaculata*

/

( )

( )

(P<0.01)

/

/

/ /

*Myzus persicae*

*Scaeva albomaculata* :

( )

( )

( )

*S. albomaculata*

( )

Syrphinae

*Myzus persicae*

(Sulzer)

( )

*S. albomaculata*

( ) ( )

*Scaeva*

( )

( )

*Scaeva albomaculata* Maquart

%

( )

( )

( )

( )

( )

)

(

*S. albomaculata*

( )

( )

( )

/ / /

( / )

( / )

( )

( )

( ) /

*S. albomaculata*

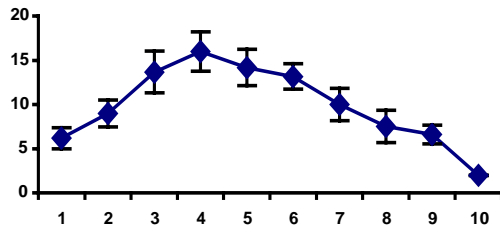
) /

/ (

( ) ( )

( )

±



( )

Minitab

*S. albomaculata*

( )

*S. pyrastris* (L.) *Scaeva*

*S. albomaculata*

/

%

/ / / /

, / , / , /

/ / , , /

*Sphaerophoria scripta* ( ) (L.)

*Epistrophe nitidicollis* (Meigen)

( )  
*S. albomaculata*

( )  
*S. pyrastris*  
%

( )

*Episyrphus*

*balteatus* (De Geer)

S. ( )

*albomaculata*

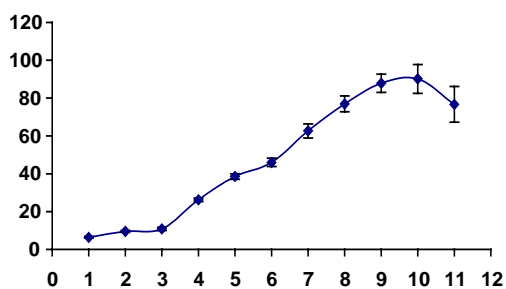
<i>M. persicae</i>	<i>S. albomaculata</i>
±	
±	
±	
±	
±	
±	
±	
±	
±	
±	
±	
±	
±	
±	
±	
±	

*M. persicae*      *S. albomaculata*

(.)

(P<0.01)

|



		( ± )	
<i>M. persicae</i>		<i>S. albomaculata</i>	
/ ± /	<b>c</b>	/ ± /	<b>c</b>
/ ± /	<b>b</b>	/ ± /	<b>b</b>
/ ± /	<b>a</b>	/ ± /	<b>a</b>

%

*M. persicae*      *S. albomaculata*      ( )

## REFERENCES

4. Chander, S. 1996. Dispersion of aphids and their predators on wheat crop. *Annals of Agricultural Research*, 17: 202- 204.
5. Hart, A. J. & J. S. Bale 1997. A method of mass-rearing the hoverfly *Episyrphus balteatus* (Diptera, Syrphidae). *Dipterists Digest*, 4: 1-3.
6. Morris, M. C. 2000. Intercropping with coriander attracts hoverflies and reduces pest infestation in Japanese cabbage fields. *Proceedings of the 13th IFOAM conference*, Basel. p. 118.
7. Mowes, M., B. Freier, T. Kreuter & H. Triltsch 1997. Tiller counting or total plot harvest – how exact are predator counts in winter wheat? *Anzeiger für Schadlingskunde Pflanzenschutz Umweltschutz*, 70: 121-126.

Syrphidae

8. Nishida, K., G. Rotheray & F. C. Thompson 2003. First non-Predaceous syrphine flower fly (Diptera: Syrphidae): A new leaf-mining *Allograpta* from Costa Rica, *Stadiu Dipterologica*, 9: 421-436.
9. Peck, L. V. 1988. Family Syrphidae. In: Soos, A. & Papp, L (edit.): *Catalogue of Palearctic Diptera*, Vol. 8, 11-230. Budapest.
10. Sadeghi, H. & F. Gilbert 2000. Oviposition preferences of aphidophagous hoverflies. *Ecological Entomology*, 25: 91-100.
11. Shonouda, M. L. 1996. Crude aqueous – extract (Kairomone) from *Aphis fabae* Scop. (Hom., Aphidae) and its effect on the behavior of the predator *Metasyrphus corollae* Fabr. (Dip., Syrphidae) female. *Journal of Applied Entomology*, 8: 489–492 .
12. Soleyman-Nezhadiyan, E. & R. Laughlin, 1998. Voracity of larvae, rate of development in eggs, larvae and pupae, and flight seasons of adults of the hoverflies *Melangyna viridiceps* Macquart and *Symosyrphus grandicornis* Macquart (Diptera: Syrphidae). *Australian Journal of Entomology*, 37: 243-248
13. Sommaggio, D. 1999. Syrphidae: Can they be used as environmental bioindicators? *Agriculture Ecosystem and Environment*, 74: 343-356.
14. Tamaki, G., B. J. Landis & R. E. Weeks 1967. Autumn population of green peach aphid on peach trees and the role of syrphid flies in their control. *Journal of Economic Entomology*, 60:433-436.
15. Tenhumberg, B. 1995. Estimating predatory efficiency of *Episyrphus balteatus* (Diptera: Syrphidae) in cereal fields. *Environmental Entomology*, 24: 687-691
16. Tinkeu, L. N. 1995. Oviposition and hatching of the eggs of *Epistrophe nitidicollis* (Diptera: Syrphidae). *Mededelingen Faculteit Landbouwkundige en Toegepaste Biologische Wetenschappen, Universiteit Gent*, 60: 619-623.
17. Van Emden , H. F. 1966. The effectiveness of Aphidophagous insects in reducing aphid population. *Ecology of Aphidophagous Insects*. 227-235 .
18. Xiong, H. & H. Dong 1992. Experiments on rearing & greenhouse release of the larvae of *Metasyrphus corollae*(Diptera: Syrphidae). *Chinese Journal of Biological Control*,. 8: 6-9
19. Yakhontov. V. 1966. Coccinellidae and Syrphidae as predators of aphids in Uzbekistan. *Ecology of Aphidophagous Insects*, 267-268