

( )

***Bemisia tabaci* (Genn.)**

***Bemisia argentifolii* Bellows and Perring  
RAPD-PCR**

//

***Bemisia tabaci* (Genn.) (Hom.: Aleyrodidae)**

***argentifolii* Bellows and Perring**

( )

±

±

)

(

***B. tabaci***

***B. tabaci***

***B. argentifolii***

***Bemisia tabaci* , RAPD-PCR**

***Bemisia argentifolii***

*B. tabaci*  
 B A *Bemisia tabaci* (Gennadius)  
 (Homoptera Aleyrodidae)  
 B ( ) ( )  
*B. argentifolii*  
 B A ( )  
 ITS1 (Gennadius)  
 ( ) *B. tabaci* , rDNA ( ) *Aleyrodes tabaci*  
 B *Physalis alkekengi* L.  
*A. inconspicua*  
 B *Bemisia*  
*B. inconspicua* (Quaintance, 1900)  
*B. argentifolii* B  
*Lamium purpurium* L. (Lamiaceae)  
*B. tabaci*  
*Bemisia tabaci*  
*B. tabaci* (Gennadius)  
 ( ) (Takahachi 1936)  
 ( )  
 B RAPD-PCR ( )  
*B. argentifolii*  
*B. tabaci* species copelex superbug  
 ( )  


---

 3. silverleaf whitefly  
 4. First Internal Transcribed Spacer  
 5. silvering  
 6. microsatellite  


---

 1. species complex  
 2. Solanaceae

A B

*Bemisia*

( )

( )

) ( / ) Nacl :

( ) (PH=

/) ( / ) Nacl (% / )

(pH=8 ) <sup>2</sup>EDTA (

SDS ( / ) ( / ) EDTA

pH = / (% / )

, SDS

OD260/OD280

( . . . ) /

dsDNA

( )

TE

//

//

//

//

//

//

//

//

//

//

//

1. Blanchetot

2. Etilen Dinitro Tetrastatic Acid

3. Sodium Dodecil Sulfate

4. Tris+EDTA

5. primer

/

UV

(S.E.M.)

| (°c)           |     |
|----------------|-----|
| 5'GAGGATCCCT3' | F2  |
| 5'ACGGTACCAG3' | F12 |
| 5'TGTAGCTGGG3' | H9  |
| 5'TCTCAGCTGG3' | H16 |
| 5'GGACCCTTAC3' | B20 |

( )

|        |                              |
|--------|------------------------------|
| /      | (Dd H <sub>2</sub> O)        |
| /      | 1 x (10x PCR buffer)         |
| 200 μM | dNTP                         |
| 3 μM   | (MgCl <sub>2</sub> )         |
| 0.4 μM | (Primer)                     |
| ( ) /  | 0.05 unit/μ (Taq polymerase) |
|        | (Template DNA)               |

DNA Ladder

plus 100 bp

2. etidium bromaid

1. Ependorf

3. denaturation

4. anneling

5. extention

... :  
 ( )  
*T. vaporariorum* *B. argentifolii* *B. tabaci*

*B. argentifolii* :  
*B. tabaci*  
 ( )

*B. tabaci*  
*argentifolii*  
*T. vaporariorum*  
*T. tuberculata*  
*Aleurotrachelus ocialis variabilis*  
 ( )

) *B. tabaci* *B. argentifolii* .(  
*B. argentifolii* ( )  
*B. tabaci*  
 ( )  
*B. argentifolii*

DNA

( )  
*B. tabaci*  
 : *B. argentifolii*  
 A H-16  
 B  
 ( ) B  
*B. argentifolii*

( )  
 B (*B. tabaci*) A  
 ,( *B. argentifolii* )  
 B  
 ( )  
*B. argentifolii*  
 B A

*B. argentifolii*  
*tabaci*

- 
1. visiform orifice
  2. operculum
  3. lingula
  4. spatulate
  5. thoracic tracheal folds

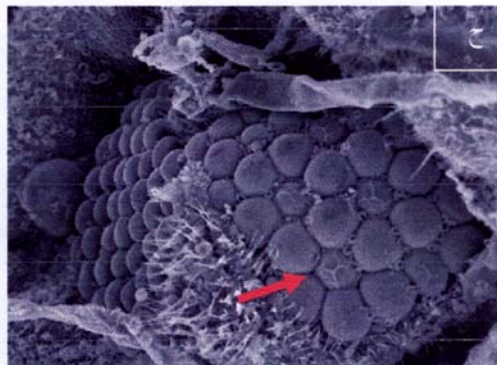
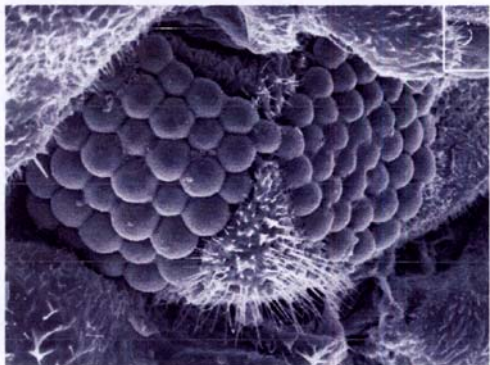
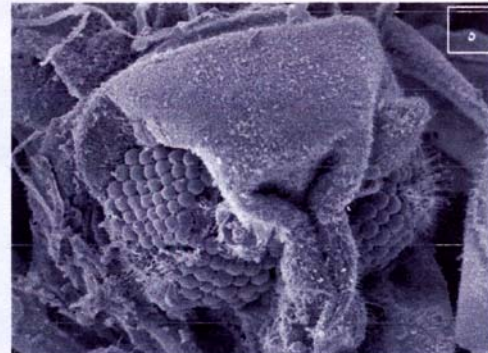
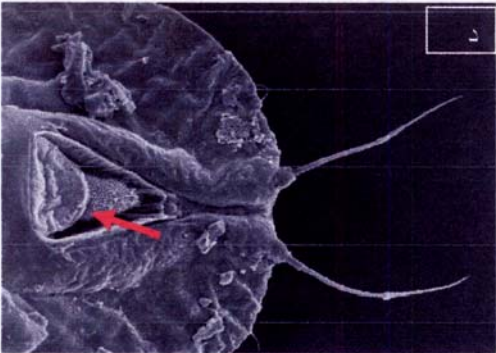
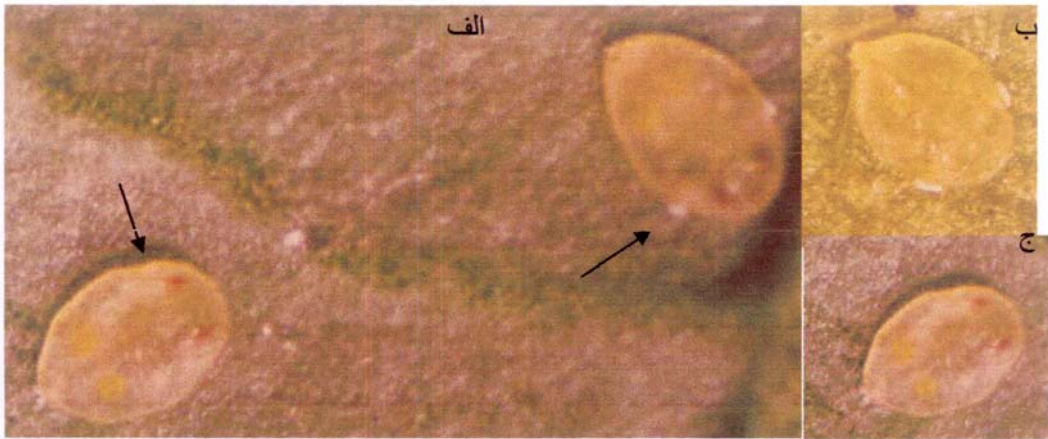
( )

A

B

B A

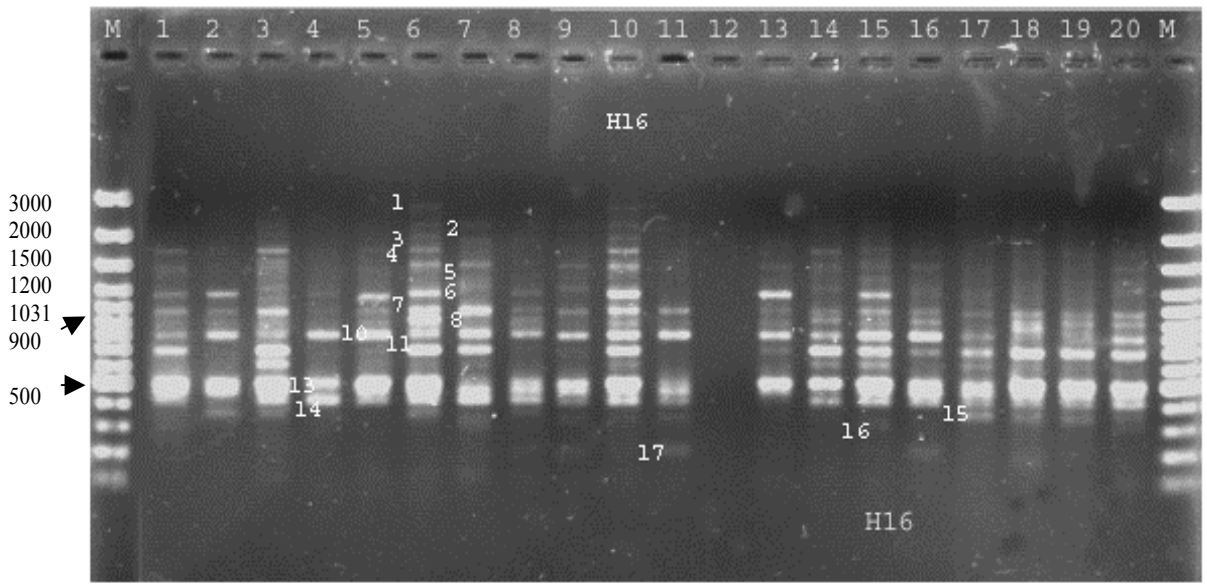
*B. argentifolii*



*B. tabaci*

( ) *B. tabaci* ( ) *B. argentifolii*  
*B. tabaci* *B. argentifolii*

*B. tabaci*  
*B. argentifolii*



OpH-16  
 ( ) ( ) ( ) ( ) ( ) ( ) (M)  
 ( ) ( ) ( )

B A  
 F2, F12, H9, H16  
 B A  
 B A

H16 B A  
 B

(OpH16 ) B A  
 B A ( )

H9 B. tabaci  
 H16 B. argentifolii

B H16  
 ( ) B.  
 F12 F2 argentifolii

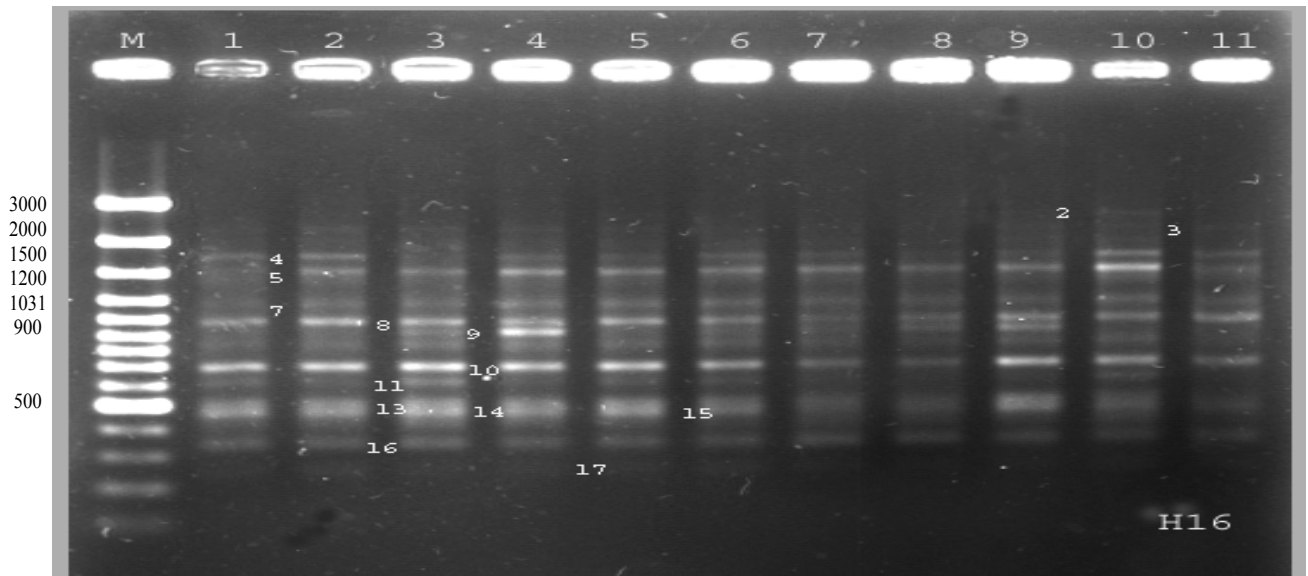
OpH-09 Bemisia  
 Bemisia ( )  
 (A, F, H )

B

B

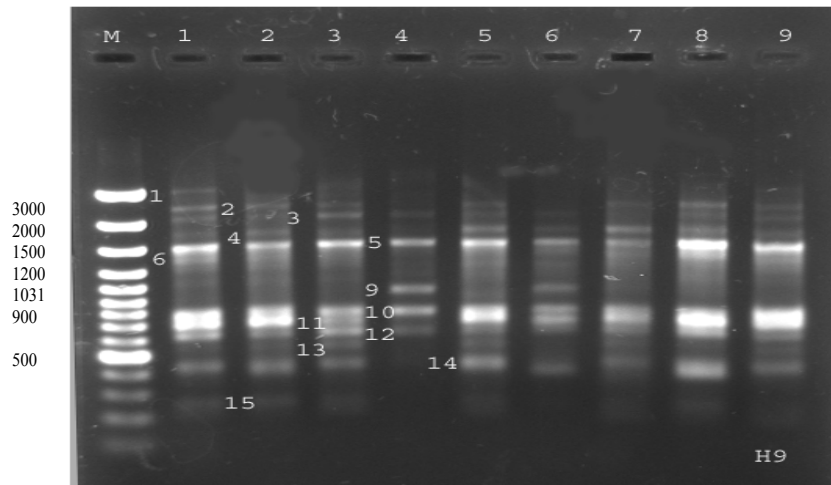
A

*Bemisia*



:OpH-16

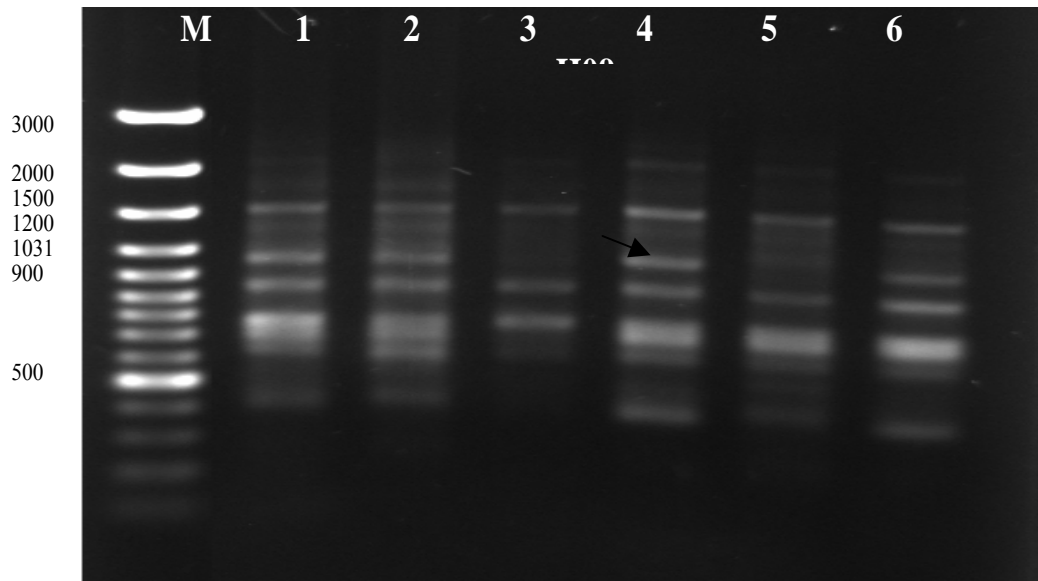
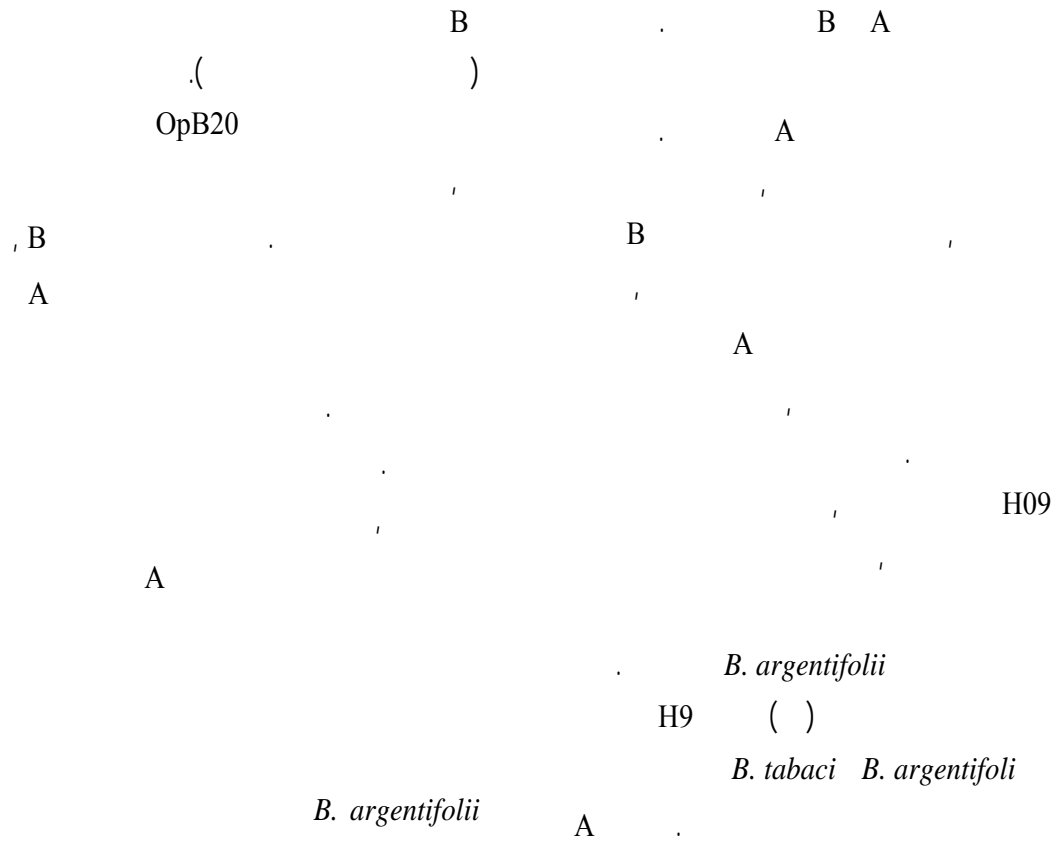
( ) ( ) ( ) ( ) ( ) ( ) (M)  
 ( ) ( ) ( ) ( ) ( )



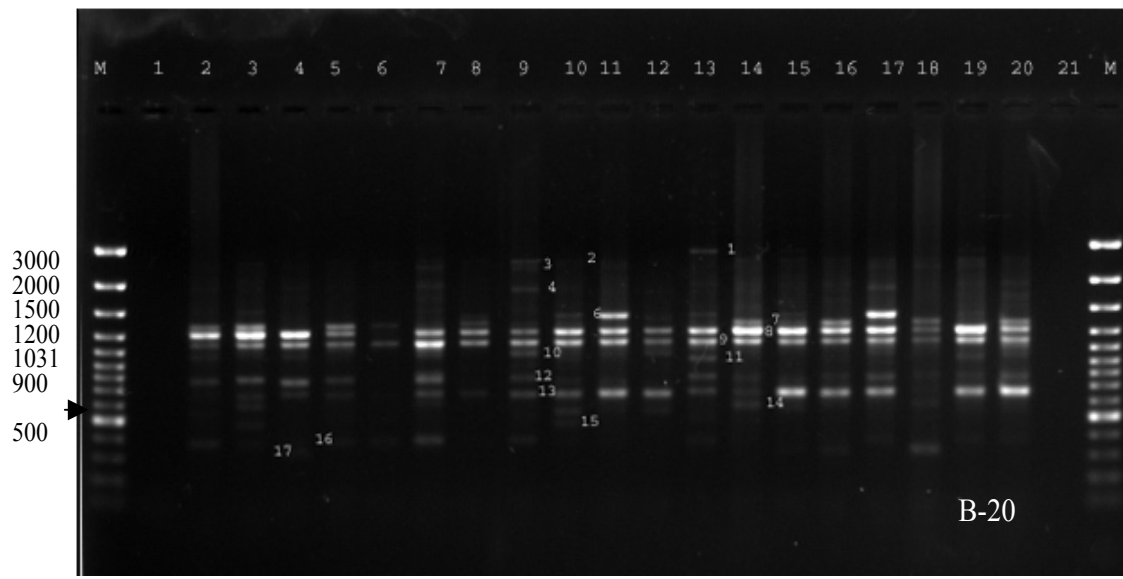
:OpH-09

( ) ( ) ( ) (M)





OpH- ) ( ) ( ) ( ) ( ) ( ) (M) :09  
 (original



OpB-20

( ) ( ) ( ) ( ) ( ) (M)  
 ( ) ( ) ( ) ( )  
 .()

( )

*B. tabaci*

RAPD-PCR

B

( )

( )

( )

Operon

( )

( )

Operon OB-20

OC-03

( )

A

OB-20

B

B

UPGMA

( )

( )

RAPD-PCR

*B. tabaci*

## REFERENCES

- Aphis* spp. . . . .
- a. . . . .
- Bemisia tabaci* (Hom.: Aleyrodidae)
- b. . . . .
- Bemisia tabaci* (Hom.: Aleyrodidae)
- c. . . . .
- Bemisia tabaci* (Genn.)
- d. . . . .
- .RAPD-PCR *Bemisia tabaci* (Genn.)
- Bemisia tabaci* (Genn.)
7. Barinago, M., 1993. Is devastating whitefly invader really a new species? *Science*, 259, 30.
  8. Bellows, T. S., T. M. Perring, R. G. Gill & D. H. Headrick, 1994. Description of a species of *Bemisia* (Homoptera: Aleyrodidae) *Annals of the Entomological Society of America*, 87(2): 195-206.
  9. Blanchetot, A. 1991. A *Musca domestica* satellite sequence detects individual polymorphic regions in insect genome. *Nucleic Acid Research*, 19: 929-939.
  10. Brown, T. A. 1996. Gene cloning, An introduction. Chapman and Hall, Fourth edition, UMIST, Manchester. 334pp
  11. Calvert, L. A., M. Cuervo, J. A. Arroyave, L. M. Constantino, A. Belloti & D. Frohlich, 2001. Morphological and mitochondrial DNA marker analyses of whiteflies (Homoptera: Aleyrodidae) colonizing cassava and beans in Colombia. *Annals of the Entomological Society of America*, 94(4): 512-519.
  12. De Barro P. J & F Driver, 1997. Use of RAPD-PCR to distinguish the B biotype from other biotypes of *Bemisia tabaci* (Gennadius) (Homoptera: Aleyrodidae). *Australian Journal of Entomology*, 36,149-152
  13. De Barro, P. J., F., Driver, J. W. H., Trueman., & J. Curran. 2000. Phylogenetic relationships of world populations of *Bemisia tabaci* (Gennadius) using ribosomal ITS1. *Molecular Phylogenetics and Evolution* 16(1):29-36
  14. De Barro, P. J., K. D. Skott, C. L. Graham, C. L Lange., & M. K. Schutze, 2002. Isolation and characterization of microsatellite loci in *Bemisia tabaci*. *Australian Journal of Entomology*, 42: 211-217.
  15. Enkegaard, A. 1993. The poinsettia-strain of the cotton whitefly *Bemisia tabaci* (Homoptera: Aleyrodidae) biological and demographic parameters on poinsettia (*Euphorbia pulcherima*) in relation to temperature. *Bulletin of Entomological Research*, 83: 535-546

16. Gill, R. J., 1990. The morphology of whitefly.in: Gerling, D. (Ed, whiteflies: their bionomics, pest status and management. Intercept Ltd., Andover, Hants, UK, pp. 13-46.
17. Guirao, P., F. Beitia, & J. L. Cenis, 1997. Biotype determination of Spanish populations of *Bemisia tabaci* (Hemiptera: Aleyrodidae). Bulletin of Entomological Research, 87:587-593.
18. Perring, T. M., A. D. Cooper, R. J. Radrigues, C. A. Farrar, & T. S. Bellows, 1993. Identification of a whitefly species by genomic and behavioral studies. Science 259: 74-77
19. Perring, T. M., 2001. The *Bemisia tabaci* soecies complex. Crop Prtection, 20: 725-737.
20. Rosell, R. C., I. D. Bedford, D. R. Frohlich, R. J. Gill, P. G. Markham & J. K. Brown, 1997. Analyses of morphological variation in distinct population of *Bemisia tabaci*. Annals of the Entomological Society of America 90: 575-589.