

() ()

()

*

m-rahgoshay@sbu.ac.ir :

*

(/ / : / / :)

()

(Melt Mush)

MgO# Cr

Davoudzadeh)

(1972

()

Knipper *et al.*)

(*al.* 1986, Stocklin 1974, Gansser 1955

)

(Cpx-bearing harzburgite

Nicolas 1989, Hopkinson & Roberts)

(1996, Roberts *et al.* 1993, Mascle *et al.* 1991

(Davoudzadeh 1972)

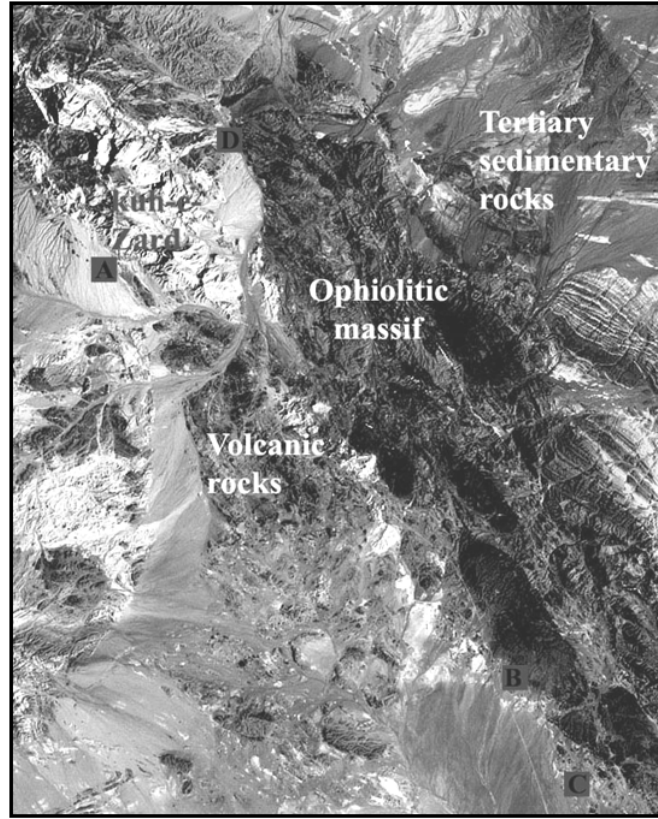
Lagabbielle)

(& Cotton 1984, Lagabbielle & Cannat 1990

Cannat *et al.* 1995, Gaherty)

(*et al.* 2004, Alt & Shanks 2003

()



A-D

()

() (Substratum)
Euphotide

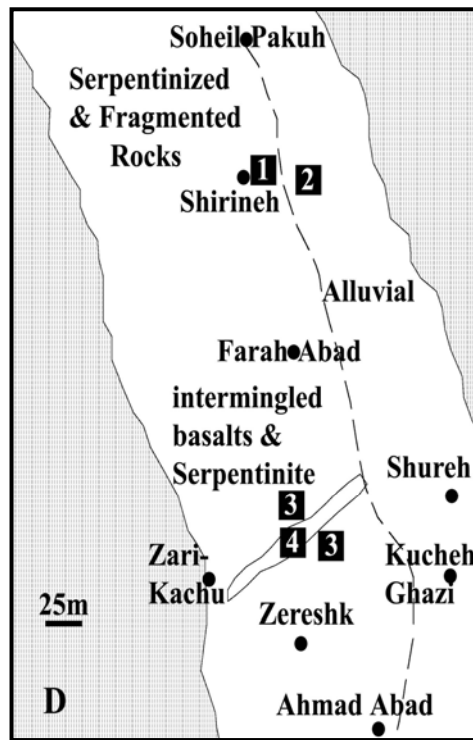
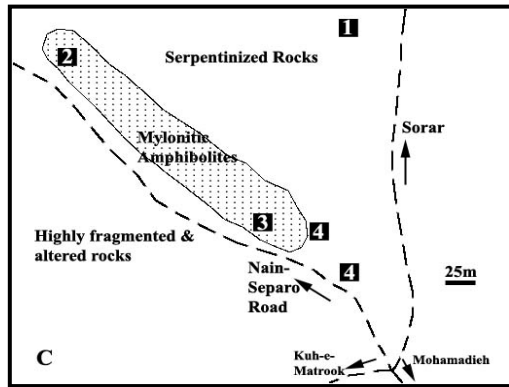
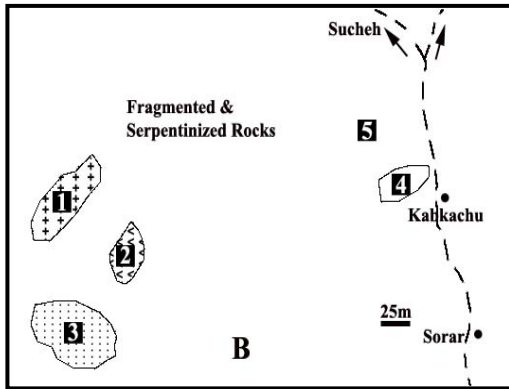
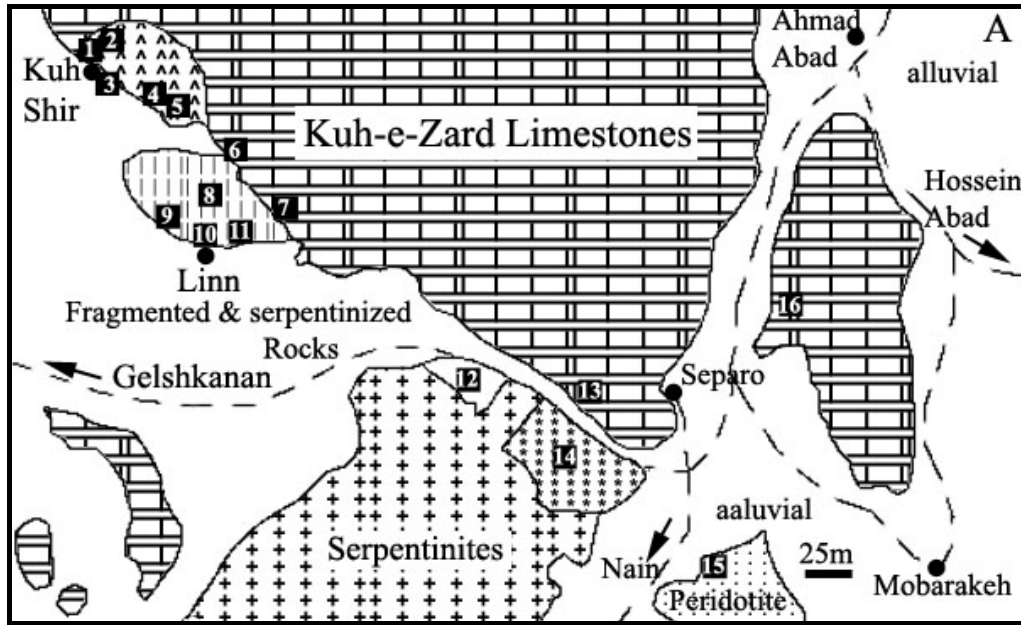
(A)

(CYAGORII 1984)

P-T
(Plurifacial)

(Miyashiro 1994)

()



A

B

C

D

(D)

()

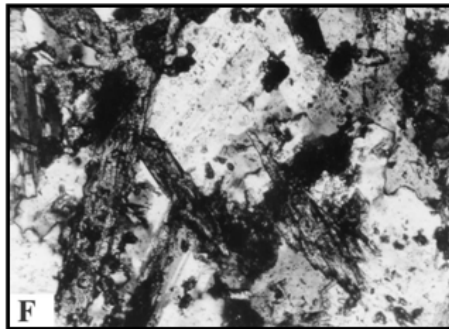
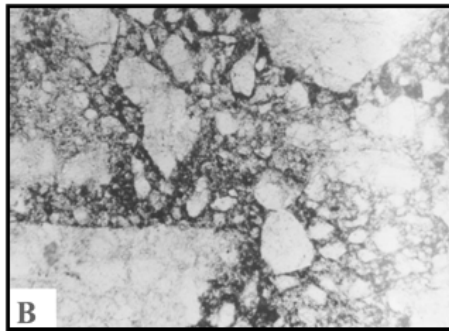
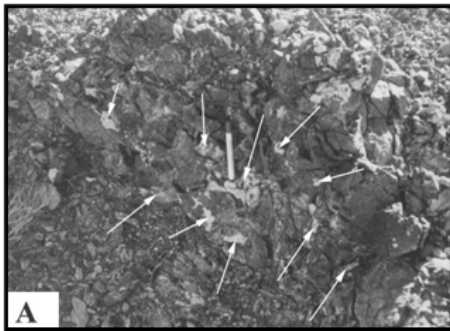
(Hydrofracturing)

()

(Nicolas 1989)

(E)

(A)



B . ()

A

(Slump Structures)

C .

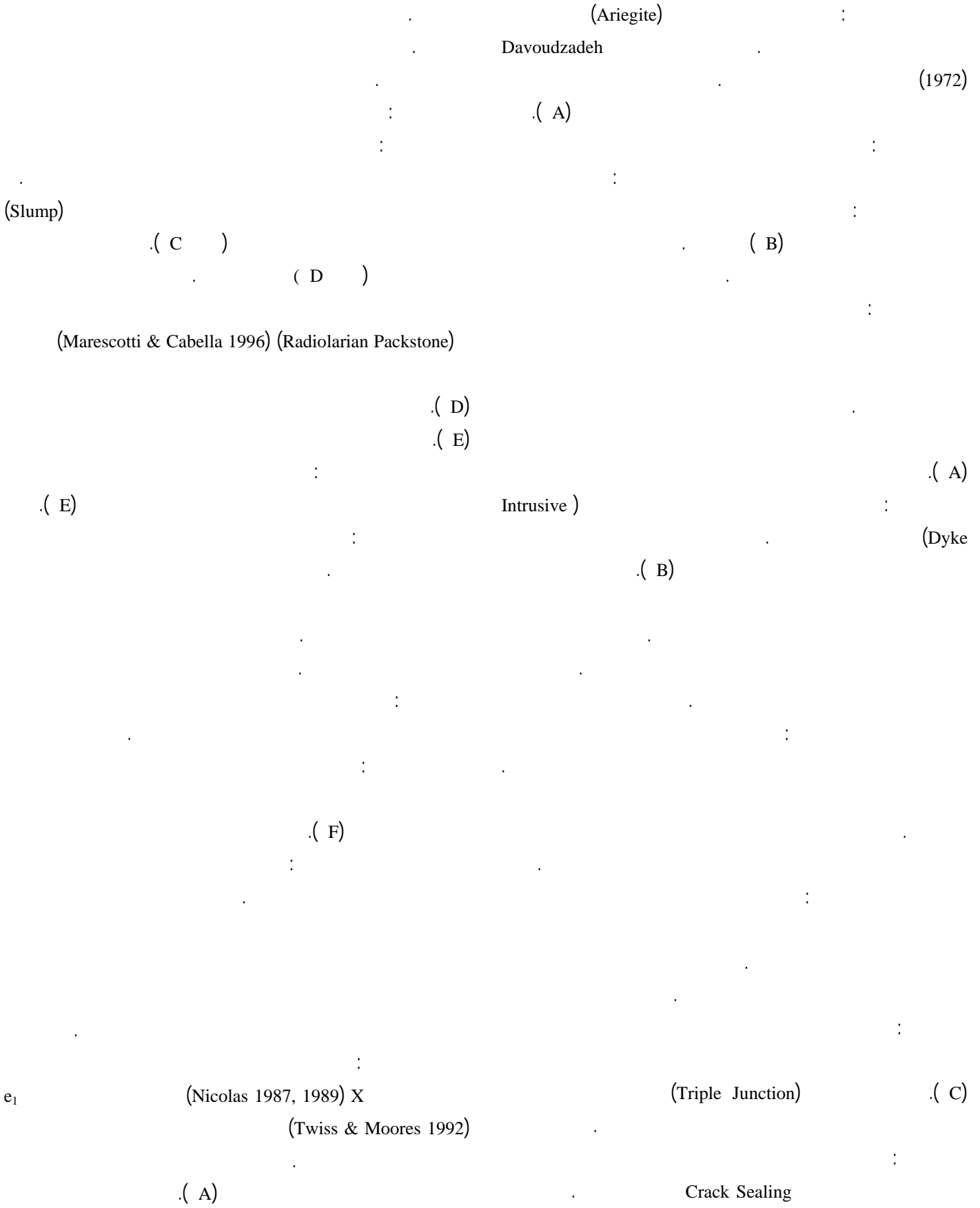
E .

D . ()

B F

F .(sl.)

()



(Drury & Urai 1990)

ϕ

S LS

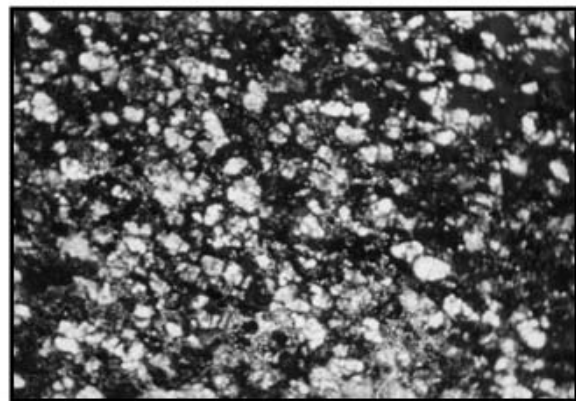
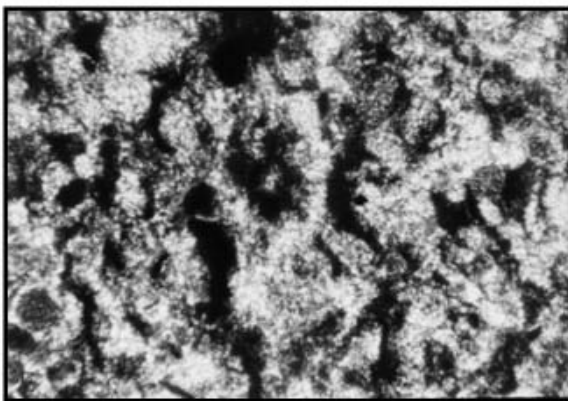
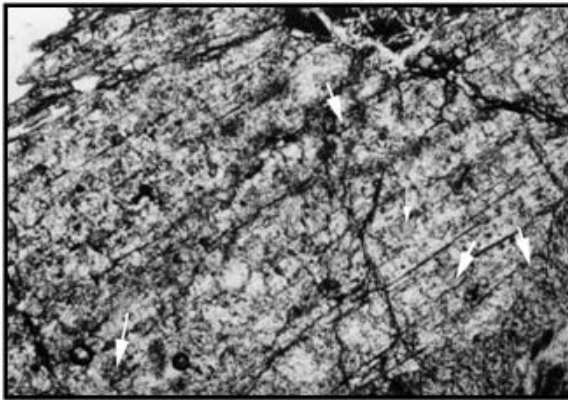
S/C

(Serrated)

Migration)

(Boundary Recrystallization

(Bulging)



C. ()

B. ()

A

D.

(chr.)

F.

E.

A

()

Stretching)

(Lination

σ

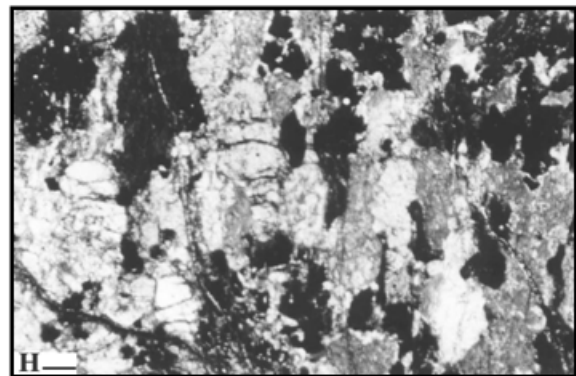
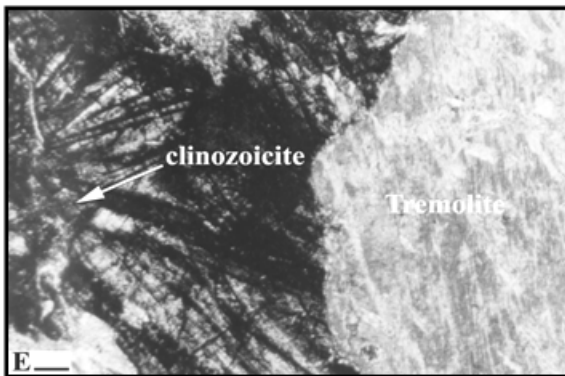
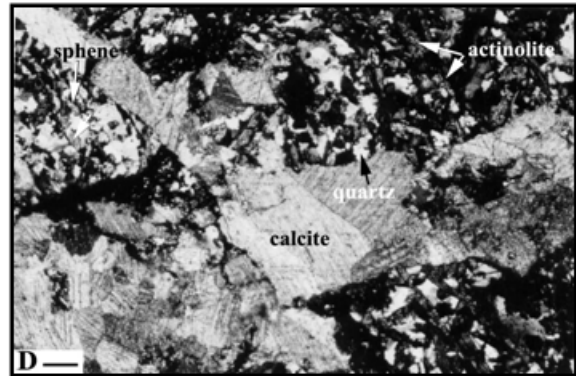
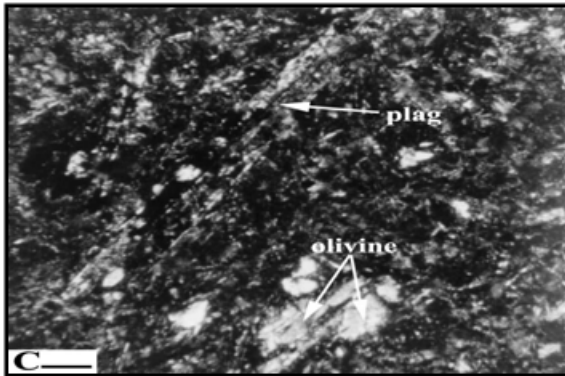
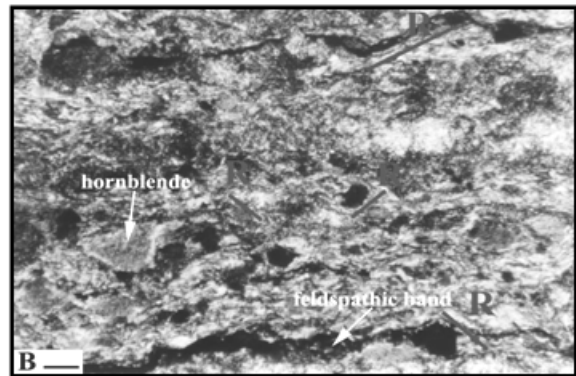
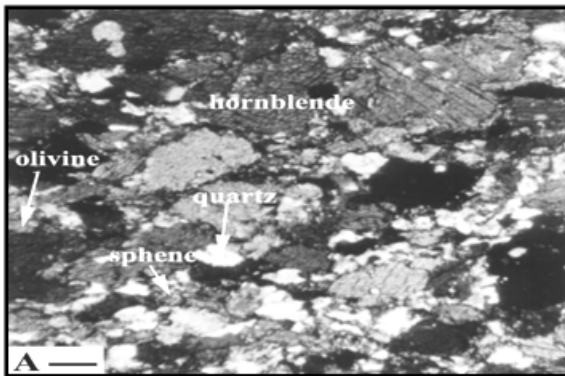
(D)

(Anthitethic) R' (Synthetic) R

(B)

(Twin Gliding)

(B)



B. A
 C. R' R σ
 E. D.
 H.

Cusp (Nicolas 1989; Jin *et al.* 1994)
 (D)

(C) (Subgrain Rotation Recrystallization)

Oblate) ()

Oblong) (Porphyroclastic
 (Boudier 1978) (Porphyroclastic (R` R)

(b) (F) ()

(Finite Strain Ellipsoid)
 (A)

(C) (X)

(Grain Shape Foliation) GSF
 (Skrotzki 2001)

(Passchier & Trouw 1996)

(B) (E)

(E) (Boundary Migration Recrystallization)

(Fluidal Ultramylonite) (F)
 δ

(B) (Pressure Fringers) (F)

($\lambda=550\text{nm}$)

C

(Shear) (E)

)

Jog (

(E)

()

()

(Cannat & Seyler 1995)

(Subgrains)

Dislocation Walls

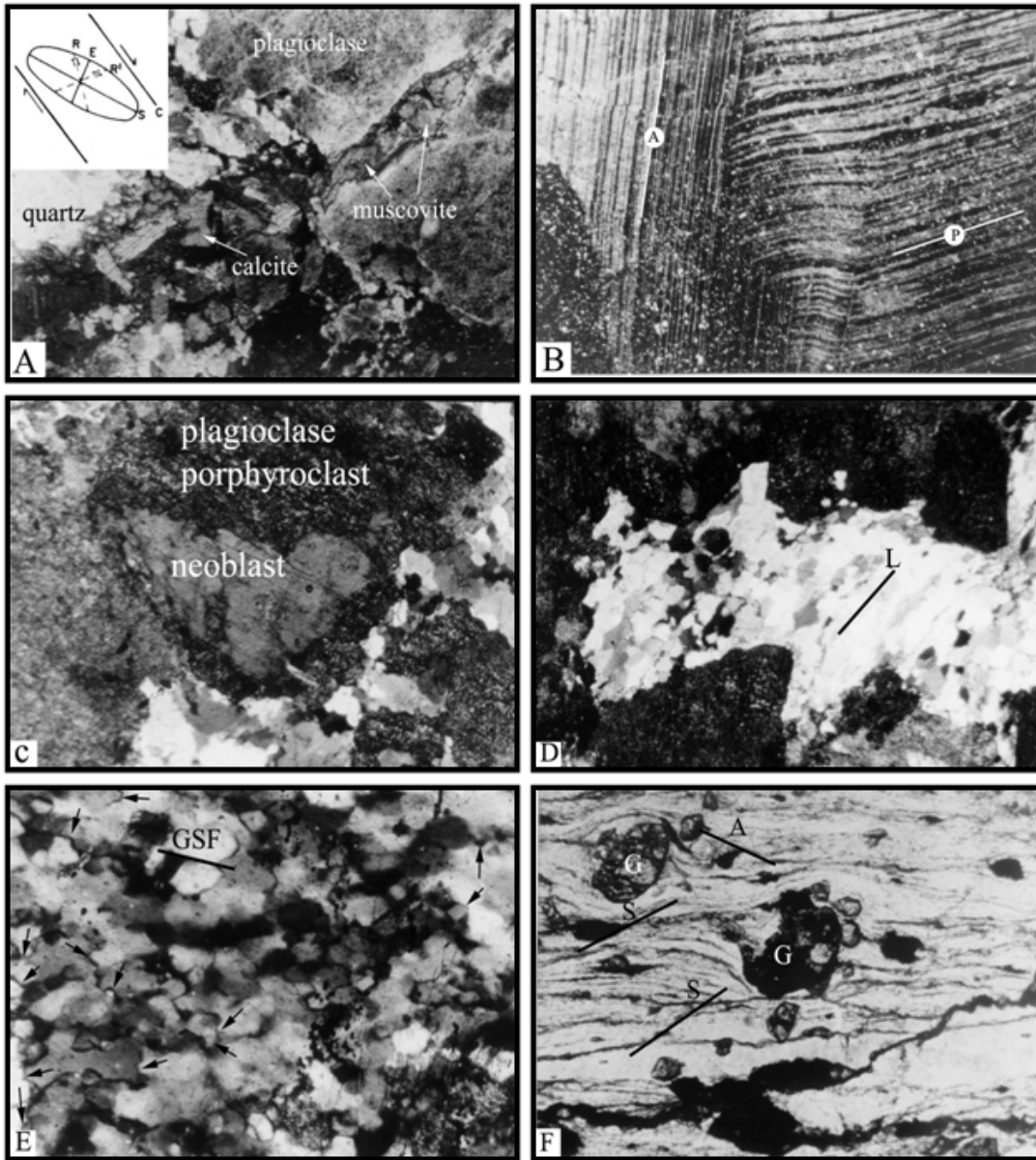
()

(C)

(D)

(Gnos & Nicolas 1996)

Dislocation Creep



()

(P)

(A)

B .

A -

C .

(GSF)

E .

D .

F . ()

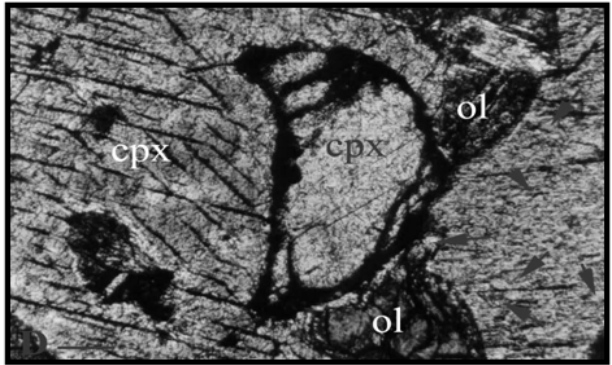
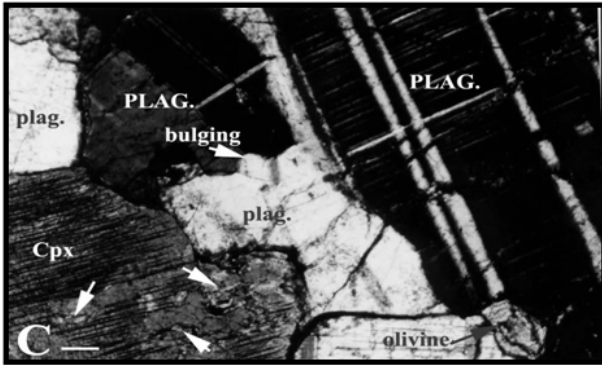
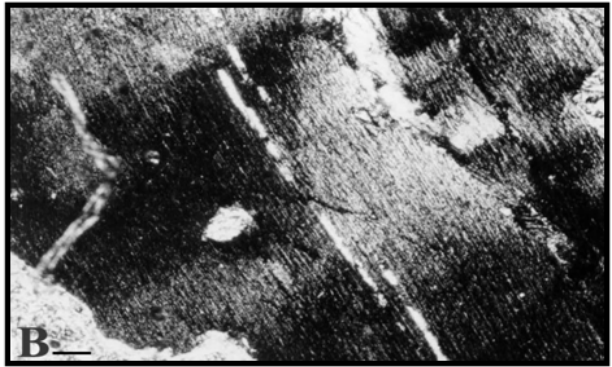
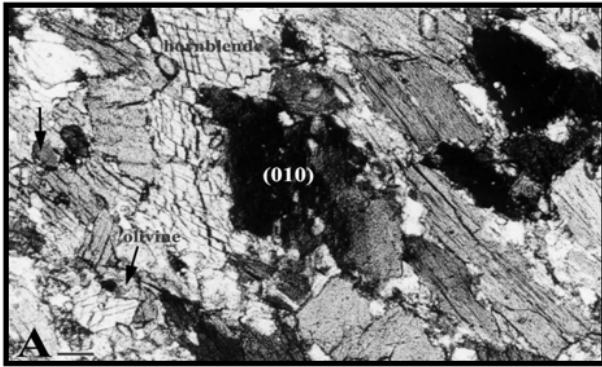
(Bulging)

(A)

(S)

(G)

E B



B.

(010)

(Subgrain)

A

()

(PLAG)

C.

(plag)

()

Lobate

D.

()

D

Rf /φ

Ramsay (1967), Dunnet

Lisle (1977) (1969)

Chew (2003) Lisle (1985), Mulchrone & Meere (2001)

(Nicolas 1992 Ildefonse 1987)

()

()

:(Mineral Preferred Orientation)

)

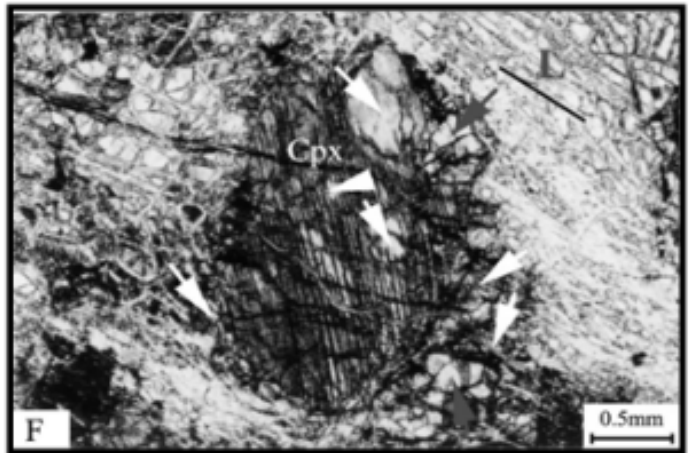
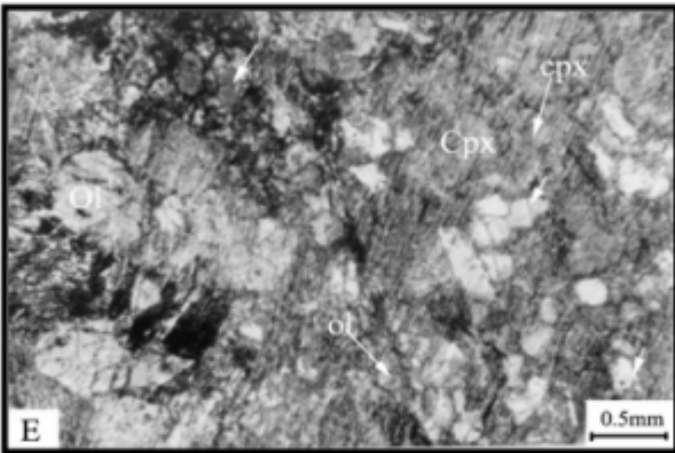
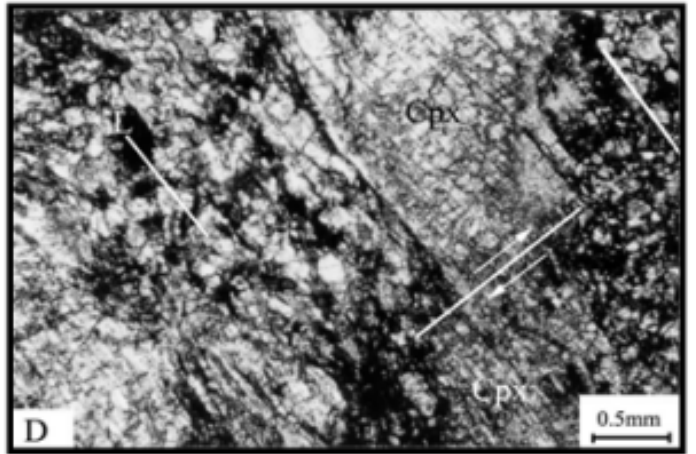
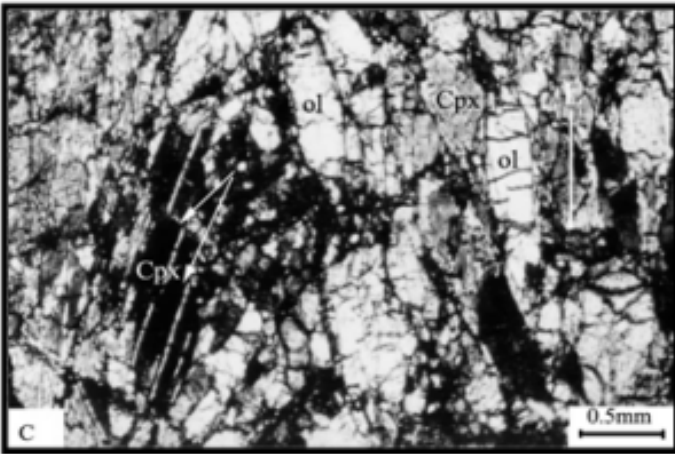
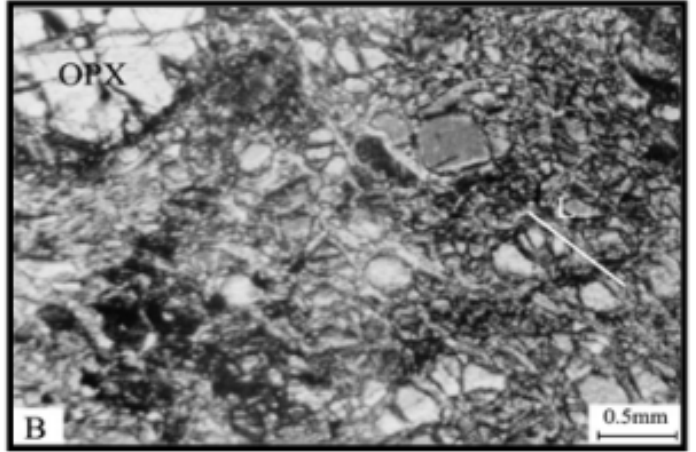
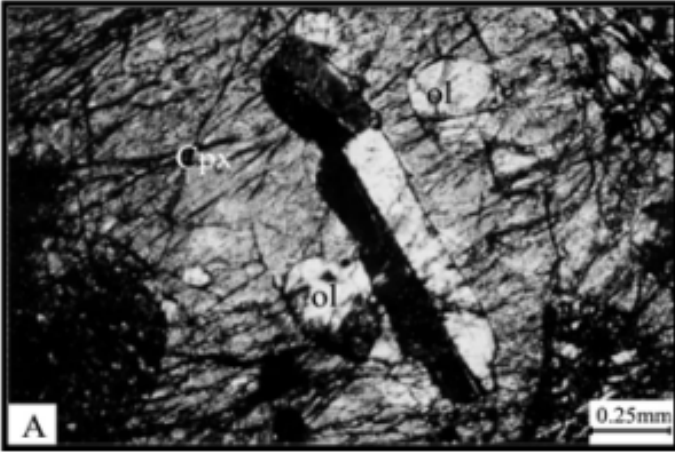
Turner &)

(Weiss 1963

(Shape Preferred Orientation) SPO

(Lattice Preferred Orientation) LPO

(



A -

B.

C.

D. ()

E.

()

()

(L:),

()

F.

()

(Embayment)

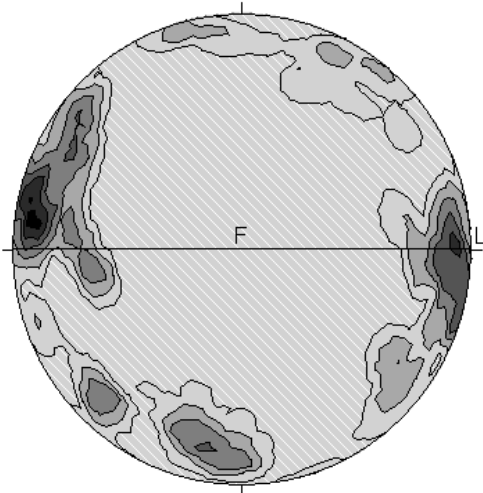
(a)

(Mainprice *et al.* 1986)

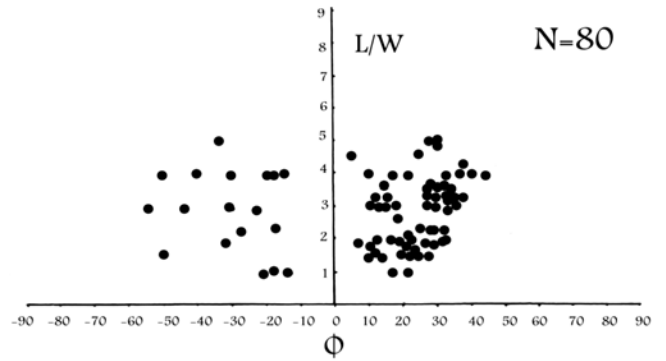
Linker *et al.*)

β C

(*al.* 1984)



L F C



C

U-Stage
(Equal Area)

α)

U-Stage (γ β)

$\alpha=Y,$

$\beta=Z, \gamma=X$

()

Shelley

U-Stage

Kerr (1977) Paschier & Throw (1996) (1995)

Nicolas & Poirier (1976) Turner & Weiss (1963)

()

C

U-stage

[0001] C

TEM X

<a>

C

(100)

(Dislocation Walls)

()

Cold Working

(Non-Coaxial)

C

Raleigh)

(Pencil Gliding)

{0kl}[100]

C

1968, Ave Lallemand & Carter 1970, Nicolas *et al.* 1971,

(Mercier & Nicolas 1975)

C

()

(C-Slip) C

()

[100](010)

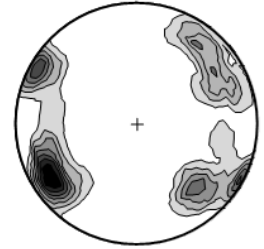
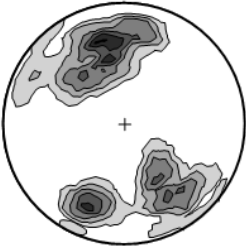
TiO_2 V $\text{MgO}\#$ TiO_2)
 () ()
 Ti ()
 Cr
 ()

$\text{FeO}\#$

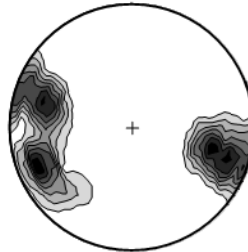
TiO_2

Mg Cr Ni

Sr Rb Ba Zr K Ca Al Ti



) γ β , α

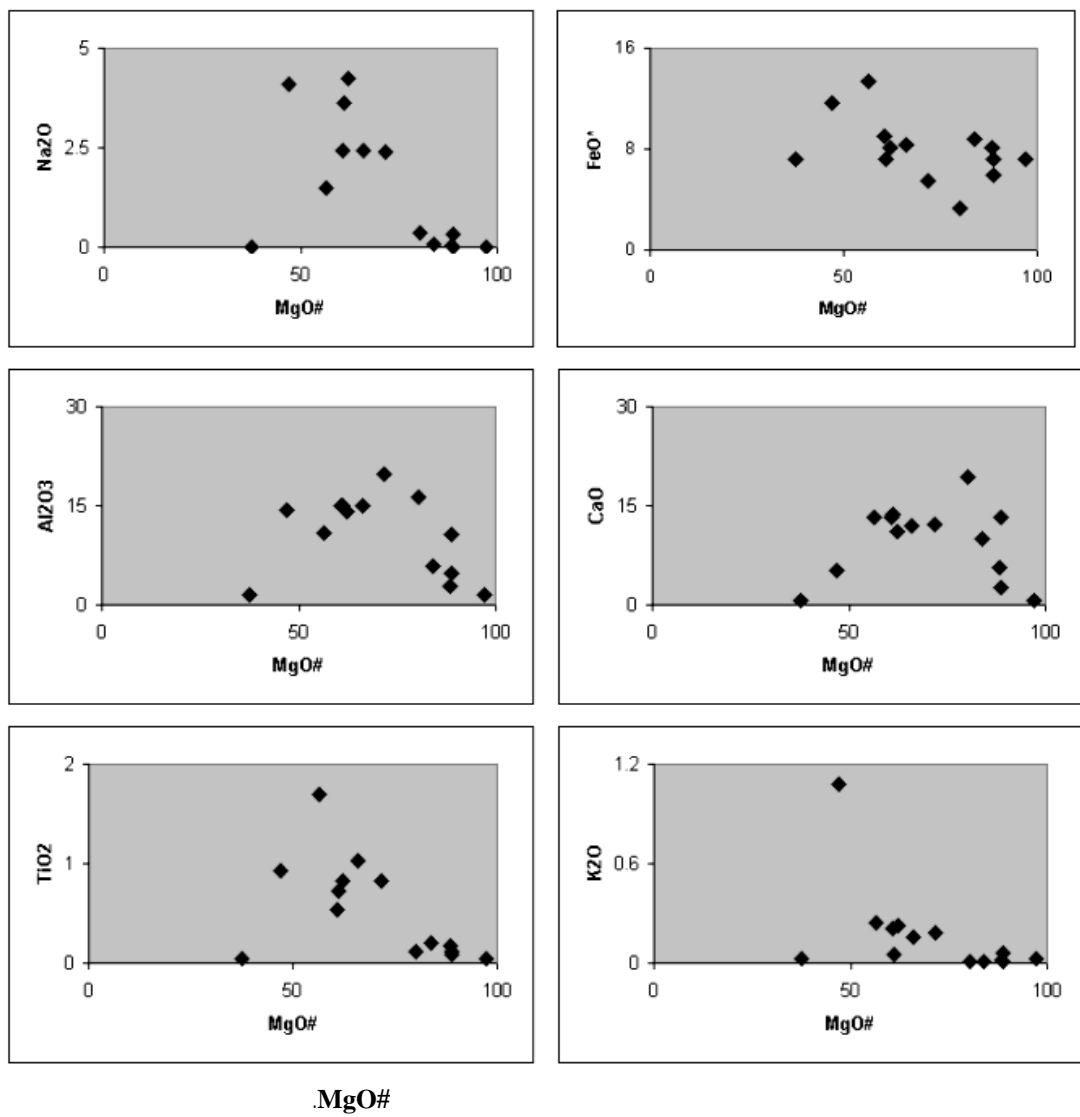


) Z Y, X

ZEISS Leo (SEM)

DSM940A

(Rhodium)



(1972) Davoudzadeh

()

,Serp.

,Lherz

,Gab.Imp.

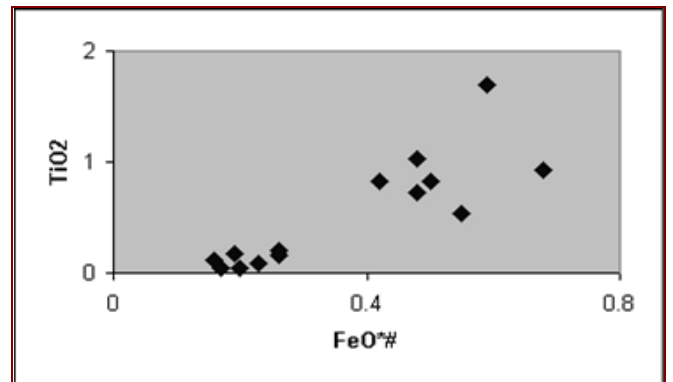
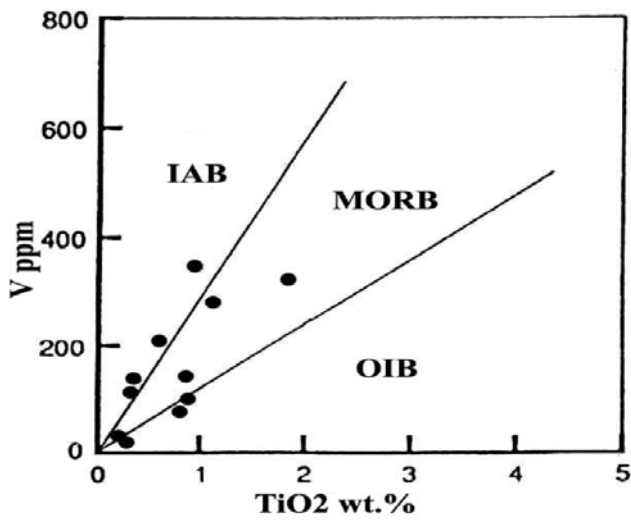
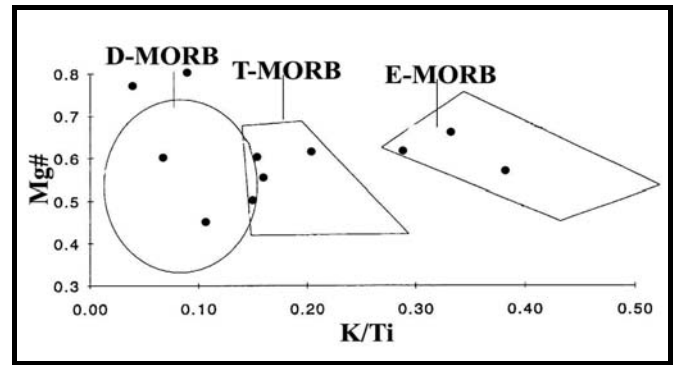
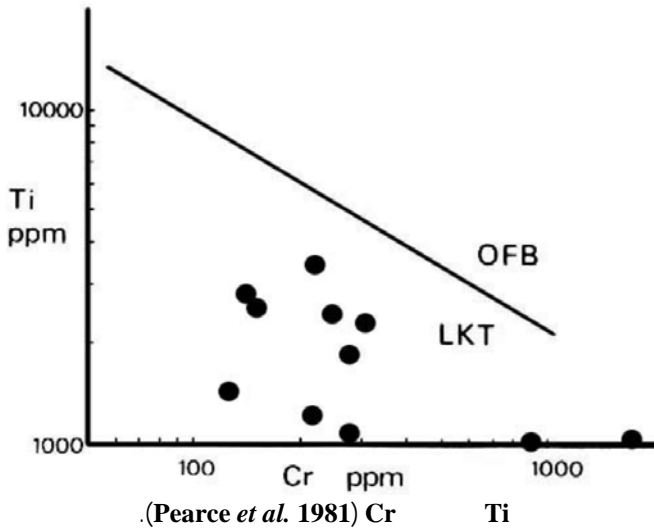
,G.D.

,Harz

No.	1	2	3	4	5	6	7	8	9	10	11	12	13
Name	Basalt	Gabbro	Gab. Imp.	Basalt	Harz.	Basalt	Gabbro	Gabbro	G.D.	Diabase	Basalt	Serp.	Lherz
SiO ₂	44.8	46	45.9	47.5	35.28	48.51	48.7	48.7	48.2	49.7	47.93	35.3	41.4
TiO ₂	0.72	0.115	0.09	0.83	0.05	0.53	0.2	0.18	1.03	0.93	1.7	0.05	0.12
Al ₂ O ₃	15.1	16.4	10.6	14.1	1.55	14.94	5.83	2.89	14.9	14.26	10.86	1.55	4.7
Fe ₂ O ₃	2.16	1.01	3.4	3.32	6.1	2.98	2.63	2.52	2.93	4.89	4.4	6.1	2.5
FeO	5.04	2.31	2.55	4.98	1.1	6.05	6.13	5.62	5.43	6.72	8.94	1.1	4.74
MnO	0.14	0.093	0.13	0.15	0.07	0.13	0.15	0.16	0.15	0.32	0.18	0.07	0.08
MgO	7.9	9.4	20	8.2	37.6	7.59	24.9	33.7	9	5.53	9.41	37.6	37.2
CaO	13.6	19.4	13.2	11	0.56	13.25	10	5.58	11.9	5.17	13.33	0.56	2.65
Na ₂ O	3.62	0.35	0.33	4.25	-	2.42	0.07	0.03	2.42	4.11	1.49	-	-
K ₂ O	0.048	0.013	0.0089	0.23	0.031	0.21	0.01	0.02	0.16	1.08	0.24	0.03	0.06
P ₂ O ₅	0.069	0.0017	0.0026	0.071	0.03	-	-	-	-	-	-	0.03	0.02
Cr	398.86	957.95	2463.3	444.76	-	518	336	419	304	24	191	-	-
Ni	85.65	67.57	502.89	94.29	-	143	852	153	152	148	161	-	-
L.O.I	6.11	3.95	2.89	4.6	15.21	3.29	0.38	0.5	4.07	7.48	3.25	17.05	7.3

(MA) (GA)
SEM (PY)

Rock	GA	GA	MA	MA	PY	PY
Mineral	garnet	amphibole	amphibole	amphibole	chlorite	Cpx
O	67.44	42.28	46.11	55.95	46.89	48.28
Na	0.81	2.33	2.37	3.22	0.6	0.24
Mg	1.21	3.57	1.9	8.12	16.26	9.87
Al	4.82	8.67	10.99	4.57	1.86	1.88
Si	12.5	15.05	22.56	22.14	24.38	23.6
Ca	1.66	5.36	16.09	6	2.55	12.77
Ti	2.18					
V	0.04					
Cr	0.15					
Fe	8.88	23.89			7.47	3.37
Co	0.62					
Cu	0.07	1.06				
K		0.02				
Total	100.38	102.23	100.02	100	100.01	100.01



()

(Sole)

(Intrusive dikes)

)

(Indigenous dikes
(Nicolas 1989)

()

(

Nicolas 1989; Nicolas &)

(Subgrains)

(Prinzhofer 1983; Jin *et al.* 1994

(Melt Mush)

)

Prinzhofer & Nicolas Cannat 1985)

Cannat & Cannat *et al.* 1990 Karson & Dick 1983 1980

(Seyler 1995

()

(

()

(Meurer & Gee 2002)

(a)

()

Detachment Faults

()

)

()

Westphal *et al.* Soffel *et al.* 1996 Davoudzadeh 1981)

,[(Thomas *et al.* 2000)

.(1986

Babaei *et al.* (2001)

Stress or Shear)

(Localization

Rahgoshay &)

(Berberian 1983)

.(Shafaii 2003

Nicolas)

Jaroslow *et al.* 1996; Dijkstra *et*)

(& Poirier 1976

(*al.* 2002

(Simple Shear)

()

Cannat *et al.* 1991a,)

.(b

TiO₂

MgO#

/) TiO₂

(% /)

MgO# (% /

MgO# Cr

CaO

)

.(Berberian & King 1981)

(

-
- Alt J.C., Shanks W.C. 2003: Serpentinization of abyssal peridotites from the MARK area, Mid-Atlantic Ridge; sulfur geochemistry and reaction model. *Geochim. Cosmochim. Acta* **67**: 641-653.
- Ave Lallemand H.G., Carter N.L. 1970: Syntectonic recrystallization of olivine and modes of flow in the upper mantle. *Geol. Soc. Am. Bull.* **81**: 2203-2220.
- Babaei A., Arvin M., Babaei H.A. 2001: An oblique convergence and rotation model for the emplacement of the Baft ophiolitic melange in Iran. *Ophioliti* **26(2b)**: 401-408.
- Berberian M. 1983: The South Caspian, a compressional depression floored by a trapped, modified oceanic crust. *Can. J. Earth Sci.* **20**: 163-183.
- Berberian M., King G.C.P. 1981: Towards a paleogeography and tectonic evolution in of Iran. *Can. J. Earth Sci.* **18**: 210-265.
- Boudier F. 1978: Structure and petrology of the Lanzo peridotite massif (Piedmont Alps). *Geol. Soc. Am. Bull.* **89**: 1574-1591.
- Cannat M. 1985: Tectonics of the Seiad massif, northern Klamath mountains, California. *Geol. Soc. Am. Bull.* **96**: 15-26.
- Cannat M. 1996: How thick is the magmatic crust at slow spreading oceanic ridges? *J. Geophys. Res.* **101(B2)**: 2847-2857.
- Cannat M., Mevel C., Stakes D. 1991a: Stretching of the deep crust at the slow-spreading Southwest Indian Ridge. *Tectonophysics* **190**: 73-94.
- Cannat M., Mamaloukas-Frangoulis V., Auzende J.M., Bideau D., Bonatti E., Honnorez J., Lagabrielle Y., Malavieille J., Mevel C. 1991b: A geological cross-section of the Vema fracture zone transverse ridge; Atlantic ocean. *J. Geodyn.* **13**: 97-118.
- Cannat M., Seyler M. 1995: Transform tectonics, metamorphic plagioclase and amphibolitization in ultramafic rocks of the Vema transform fault (Atlantic Ocean). *Earth Plan. Sci. Lett.* **133**: 283-298.
- Cannat M., Mevel C., Maia M., Deplus C., Durand C., Gente P., Agrinier P., Bekrouchi A., Dubuisson G., Humler F., Reynold J. 1995: Thin crust, ultramafic exposures and rugged faulting patterns at the Mid-Atlantic ridge (22-24 N). *Geology* **23**: 49-52.
- Cannat M., Bideau D., Hebert R. 1990: Plastic deformation and magmatic impregnation in serpentinized ultramafic rocks from the Garrett Transform fault (East Pacific Rise). *Earth Planet. Sci. Lett.* **101**: 216-232.
- Chew D.M. 2003: An Excel spreadsheet for finite strain analysis using the R_f/ϕ technique. *Comp. & Geosci.* **29**: 795-799.
- CYAGOR II Group 1984: Intraoceanic tectonism on the Gorringer Bank: observations by submersible. In Gass I.G., Lippard S.J., Shelton A.W. (eds), *Ophiolites and oceanic lithosphere*, geological society special publications. Blackwell Scientific Publications.
- Davoudzadeh M. 1972: Geology and petrography of the area North of Nain, Central Iran. Geological survey of Iran. Rep. No. **14**.
- Davoudzadeh M. 1981: On the rotation of the central- east Iran microplate. *N. Jb. Geol. Palaont. Mh.* **3**: 180-192.
- Dijkstra A.H., Drury M.R., Vissers R.L.M., Newman J. 2002: On the role of melt-rock reaction in mantle shear zone formation in the Othris peridotite massif (Greece). *J. Str. Geol.* **24**: 1431-1450.
- Drury M.R., Urai J.L. 1990: Deformation-related recrystallization processes. *Tectonophysics* **172**: 235-253.
- Dunnet D. 1969: A technique of finite strain analysis using elliptical particles. *Tectonophysics* **7**: 117-136.
- Floyd P.A., Winchester J.A., Ciesielczuk J., Lewandowska A., Szczepanski J., Turniak K. 1996: Geochemistry of early Palaeozoic amphibolites from the Orlica-Snieznik dome, Bohemian massif: petrogenesis and palaeotectonic aspects. *Geol.Rundsch.* **85**: 225-238.
- Gaherty J.B., Lizarralde D., Collins J.A., Hirth G., Kim S. 2004: Mantle deformation during slow seafloor spreading constrained by observations of seismic anisotropy in the western Atlantic. *Earth Planet. Sci. Lett.* in press.
- Gansser A. 1955: New aspects of the geology in central Iran. Proc. Fourth World Petroleum Congr. sect. I/A/5, 279-300.
- Gnos E., Nicolas A. 1996: Structural evolution of the northern end of the Oman ophiolite and enclosed granulites. *Tectonophysics* **254**: 111-137.
- Hekinian R., Bideau D., Hebert R., Niu Y. 1995: Magmatism in the Garret transform fault (East Pacific Rise near 13° 27' S). *J. Geophys. Res.* **100 (B7, 10)**: 163-185.
- Hopkinson L., Roberts S. 1996: Fluid evolution during tectonic exhumation of oceanic crust at a slow- spreading axis: evidence from the Lizard ophiolite, UK. *Earth Planet. Sci. Lett.* **141**: 1-4, 125-136.
- Ildelfonse B. 1987: Les lineations et la deformation: aspects naturels, theoriques et experimentaux des orientations preferentielles de forme. These Doctorat, Universite de Lyon.

- Jaroslow G.E., Hirth G., Dick H.J.B. 1996: Abyssal peridotite mylonites: implications for grain size sensitive flow and strain localization in the oceanic lithosphere. *Tectonophysics* **256**: 17-37.
- Jin Z.M., Green H.W., Zhou Y. 1994: Melt topology in partially molten mantle peridotite during ductile deformation. *Nature* **372**: 164-167.
- Karson J.A., Dick H.J.B. 1984: Deformed and metamorphosed oceanic crust on the Mid-Atlantic ridge. *Ophioliti* **9**: 279-302.
- Kerr P.F. 1977: Optical mineralogy. McGraw- Hill.
- Knipper A., Riccou L.E., Dercourt J. 1986: Ophiolites as indicators of the geodynamic evolution of the Tethyan ocean. *Tectonophysics*. **123**: 213-240.
- Lagabrielle Y. 1994: Ophiolites of the Southwestern Alps and the structure of the Tethyan oceanic lithosphere. *Ophioliti* **19**: 2b, 413.
- Lagabrielle Y., Cannat M. 1990: Alpine Jurassic ophiolites resemble the modern central Atlantic basement. *Geol.* **18**: 319-322.
- Lagabrielle Y., Cotton J. 1984: Le matériel détritico ophiolitique des séries océaniques liguro-piémontaises. L'exemple du Haut-Queyras. Contribution à l'étude des prasinites. *Ophioliti* **9**: 1-43.
- Linker M.F., Kirby S.H., Ord A., Christie J.M. 1984: Effects of compression direction on the plasticity and rheology of hydrolytically weakened synthetic quartz at atmospheric pressure. *J. Geophys. Res.* **89**: 4241-4255.
- Lisle R.J. 1977: Clastic grain shape and orientation in relation to cleavage from the Aberystwyth Grits, Wales. *Tectonophysics* **39**: 381-385.
- Lisle R.J. 1985: Geological strain analysis: a manual for the R_f/ϕ technique. Pergamon Press, Oxford.
- Mainprice D., Bouchez J., Blumenfeld P., Tubia J. 1986: Dominant C slip in naturally deformed quartz; implications for dramatic plastic softening at high temperature. *Geol.* **14**: 819-822.
- Marescotti P., Cabella R. 1996: Significance of chemical variations in a chert sequence of the Diaspri Di Monte Alpe formation (Val Graveglia, Northern Apennine, Italy). *Ophioliti* **21(2)**: 139-144.
- Mascle G., Lemoine M., Mascle J., Rehault J.P., Tricart P. 1991: Ophiolites and the oceanic crust: New evidence from the Tyrrhenian sea and the Western Alps. *J. Geodyn.* **13**: 2-4, 141-161.
- Mercier J.C.C., Nicolas A. 1975: Textures and fabrics of upper mantle peridotites as illustrated by xenolites from basalts. *J. Pet.* **16**: 454-487.
- Meurer W.P., Gee J. 2002: Evidence for the protracted construction of slow-spreading oceanic crust by small magmatic injections, *Earth Planet. Sci. Lett.* **201**: 45-55.
- Miyashiro A. 1994: Metamorphic Petrology. UCL Press.
- Mulchrone K.F., Meere P.A. 2001: A Windows program for the analysis of tectonic strain using deformed elliptical markers. *Comp. & Geosci.* **5 (3-4)**: 325-334.
- Nicolas A. 1989: Structure of ophiolites and dynamics of oceanic lithosphere. Kluwer Academic publishers.
- Nicolas A. 1987: Petrology and structural geology. Reidel Publishing Company.
- Nicolas A. 1992: Kinematics in magmatic rocks with special reference to gabbros. *J. Pet.* **33**: 891-915.
- Nicolas A., Poirier J.P. 1976: Crystalline plasticity and solid state flow in metamorphic rocks. John Wiley. New York.
- Nicolas A., Prinzhofer A. 1983: Cumulative or residual origin for the transition zone in ophiolites: structural evidence. *J. Pet.* **24**: 188-206.
- Nicolas A., Bouchez J.L., Boudier F., Mercier J.C. 1971: Textures, structures and fabrics due to solid state flow in some European ophiolites. *Tectonophysics*. **12**: 55-85.
- Passchier C.W., Trouw R.A. 1996: Microtectonics. Springer-Verlag. Stuttgart.
- Pearce J.A., Alabaster T., Shelton A.W., Searle M.P. 1981: The Oman ophiolite as a Cretaceous arc-basin complex: evidence and implications. *Philos. Trans. R. Soc. London* **A300**: 299-317.
- Prinzhofer A., Nicolas A. 1980: The Bogata Peninsula, New Caledonia: a possible oceanic transform fault. *J. Geo.* **88**: 387-398.
- Rahgoshay M., Shafaii H. 2003: Stress localization in mantle and its effect on melt injection. *Geochim. Cosmochim. Acta* **67**: 18(S1), A389.
- Raleigh C.B. 1968: Mechanisms of plastic deformation of olivine. *J. Geophys. Res.* **73/14**: 4011-4022.
- Ramsay J.G. 1967: Folding and fracturing of rocks, McGraw-Hill, New York.
- Roberts S., Andrews J.R., Bull J.M., Sanderson D.J. 1993: Slow-spreading ridge-axis tectonics: evidence from the Lizard complex, UK. *Earth Planet. Sci. Lett.* **116**: 101-112.
- Shelley D. 1995: Igneous and metamorphic rocks under the microscope. Chapman & Hall.
- Skrotzki W. 2001: Dislocation- mechanism of clinoamphibole formation in deformed augite. *Eur. J. Mineral.* **13**: 245-252.
- Soffel H.C., Davoudzadeh M., Rolf C., Schmidt S. 1996: New paleomagnetic data from Central Iran and a Triassic palaeoreconstruction. *Geol. Rundsch.* **85**: 293-302.
- Stocklin J. 1974: Possible ancient continental margins in Iran. In Burke, C.A. and Drake, C.L. (eds), The geology of continental margins. Springer-Verlag. Pp. 873-887.
- Thomas R.M., Coogan L.A., O'Hara M.J. 2000: Magma transport and storage in the melt lens and underlying crystal mush at fast-spreading ridges: constraints from the Oman ophiolite. Ninth Annual V.M. Goldschmidt Conference. Pp. 7245.
- Turner F.J., Weiss L.E. 1963: Structural analysis of metamorphic tectonites. McGraw-Hill.
- Twiss R., Moores E. 1992: Structural geology. W.H. Freeman & Company, New York.
- Westphal M., Bazhenov M.L., Lauer J.P., Pechersky D.M., Sibuet J.C. 1986: Paleomagnetic implications on the evolution of the Tethys belt from the Atlantic ocean to the Pamirs since the Triassic. *Tectonophysics*. **123**: 37-82.