

Salinicoccus sp. strain QW6

*

alamoze@yahoo.com : - *
(// : // :)

()
/ / pH
(/)
(/)
Salinicoccus
/ / pH /

(%)

EDS (TEM)

Salinicoccus ‘ ‘ :

L-Jornes *et al.* 1994, Turner *et al.* 1992, Walter)

(& Taylor 1992 (Klevay 1996, Taylor 1999)

(Taylor 1999)

Trevors)

(*et al.* 1987, Burton *et al.* 1987

/ /

(Sekine *et al.* 1991)

Turner)

(Wagener *et al.* 1995)

(2001

Summers & Silver)

(1978

()

°C

MIC

:

(1997)

Yamada

/ %

- (/ × cfu/ml) / cc
rpm

(rpm)

(Turner *et al.* 1992) DDTC

/ cc

(DDTC)

/ ×
°C

(St. Louis, Mo.)

(E. Merck, Darmstadt, Germany)

DDTC

(Turner *et al.* 1992)

) (/ /) pH

(/)
/ ()

(/)

NaCl 81, MgCl₂ 7, MgSO₄ 9.6, CaCl₂ 0.36, KCl 2,
(Nieto *et al.* 1998) NaHCO₃ 0.06, NaBr 0.026

: EDS

(MIC)

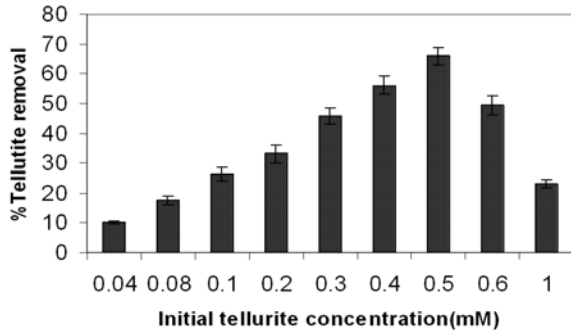
(OD 1.2) mid-log

(Washington *et al.* 1980)

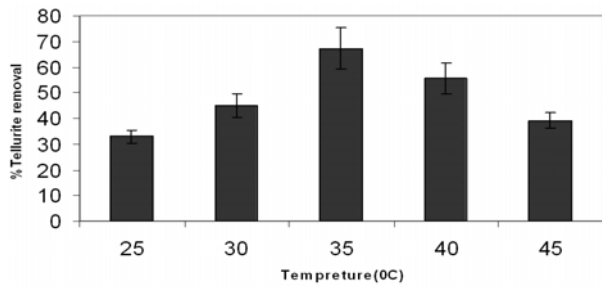
MIC

(Raynolds 1963)

/ × cfu/ml



QW6 *Salinicoccus*
 pH = / %
 ±
 : pH
 / / pH
 / °C
 .() pH



QW6 *Salinicoccus*
 (pH= /) %
 ±

(Solar Salt) (w/v %)
)
 ()
 .()
 -
 ()

(Na ₂ SeO ₄)	(Na ₂ SeO ₃)	(K ₂ TeO ₃)
<		QW6
<		QW5
		MH8
		HB3
		CHW7
-	<	<

Qw6 MIC
 Qw6

) *Salinicoccus*

MIC QW6

()

/ /

)

/

.(%

:

()

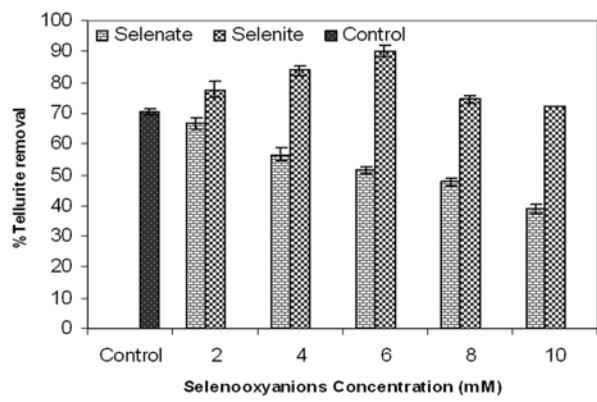
.()

%

/

%)

.(



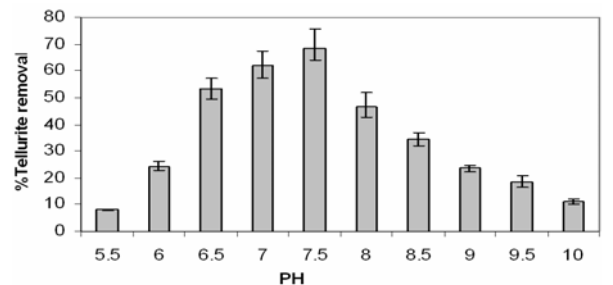
QW6 Salinicoccus

/

%

.(pH= /)

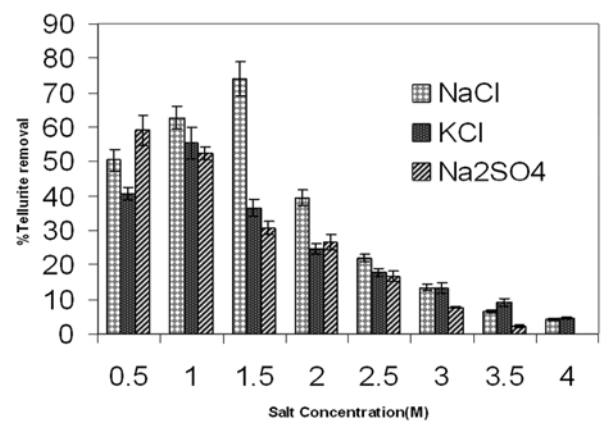
±



pH -
QW6 Salinicoccus
% %

±

.()



Salinicoccus

%

QW6

.(pH= /)

±

(%)

NaCl /

()

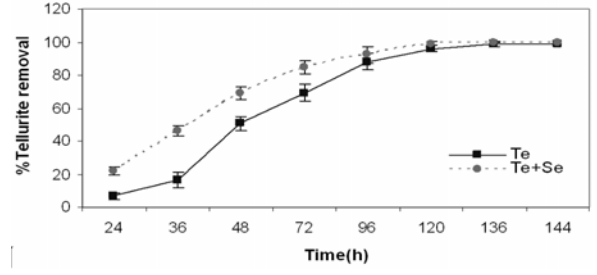
/ / NaCl

/

%

/ KCl

Qw6
%)



TEM B A EDS

A Qw6

QW6 *Salinicoccus*

(B)

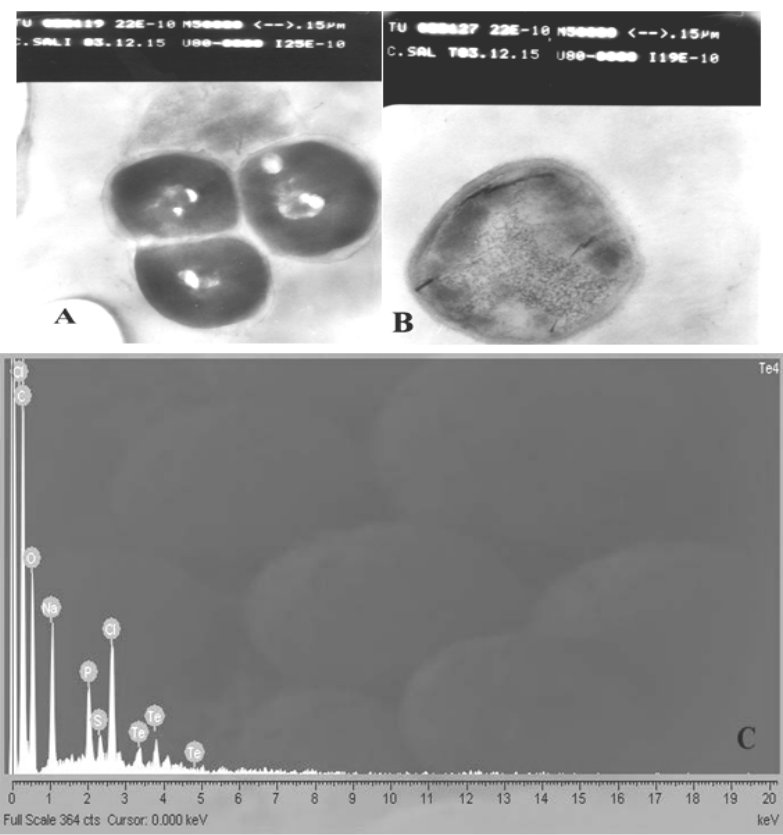
1 mM

(pH= /)

EDS

±

(C)



QW6 *Salinicoccus* (TEM)

-A-

QW6 *Salinicoccus* (TEM)

- B .

%

-C .

%

(EDS

SEM)

Salinicoccus

sp.strain QW6

:

°C KCl, 1M pH 7.5, NaCl, 1.5M, Na₂SO₄, 1M
/ mM.(Ventosa *et al.* 1998).

.()

/

%

.()

.()

MIC

()

QW6

Qw6

.()

Moore &) *R. sphaeroides* 2.4.1Pearion &) *Natronococcus occultus* (Kaplan 1992, 1994*Escherichia* (Jablonski 1999(Jobling & Ritchie,1987) *coli*

Qw6

QW6

QW6

*Salinicoccus**Salinicoccus*

sp. strain Qw6

DDTC

:

Burton G.A., Gidding T.H., Debrine P., Fall R. 1987: High incidence of selenite-resistant bacteria from a site polluted with selenium. *Appl. Environ. Microbiol.* **53**: 185–188.

Jobling M.G., Ritchie D.A. 1987: Genetic and physical analysis of plasmid genes expressing inducible resistance of tellurite in *Escherichia coli*. *Mol. Genet.* **208**: 288–293.

Klevay L.M. 1976: Pharmacology and toxicology of heavy metals, tellurium. *Pharmacol. Ther.* **1**: 223–229.

L-Jornes G., Osborn A.M., Ritchie D.A., Strike P., Hobman J.L., Brown N.L., Rouch D.A. 1994: Accumulation and intracellular fate of tellurite-resistant *Escherichia coli*: A model for the mechanism of resistance. *FEMS Microbiol. Lett.* **118**: 113–120.

Moore M.D., Kaplan S. 1992: Identification of intrinsic-high-level resistance to rare-earth oxides oxyanions in members of the class proteobacteria: characterization of tellurite, selenite, and rhodium susquioxide reduction in *Rhodobacter sphaeroides*. *J. Bacteriol.* **174**: 1505–1514.

- Moore M.D., Kaplan S. 1994: Members of the family Rhodospirillaceae reduce heavy-metal oxyanions to maintain redox poise during photosynthetic growth. *ASM News* **60**: 7-23.
- Nieto J.J., Fernandez-Castillo R., Marquez M.C., Ventosa A., Quesada E., Ruiz-Berraquero F. 1989: Survey of metal tolerance in moderately halophilic eubacteria. *Appl. Environ. Microbiol.* **55**: 2385-2390.
- Pearion C.T., Jablonski P.E. 1999: High-level intrinsic resistance of *Natronococcus occultus* to potassium tellurite, *FEMS Microbiol. Lett.* **74**: 19-23.
- Raynolds E.S. 1963: The use of lead citrate at high pH as an electron-opaque stain in electron microscopy. *J. Cell. Biol.* **17**: 208-212.
- Sekine Y., Tsurumi K., Hashimoto Y. 1991: Tellurium concentration in soil: Relation to atmosphere aerosol. *Environ. Sci.* **1**: 47-56.
- Summers A.O., Silver S. 1978: Microbial transformation of metals. *Ann. Rev. Microbiol.* **32**: 637-672.
- Taylor D.E. 1999: Bacterial tellurite resistance. *Trends Microbiol.* **7**: 111-115.
- Taylor D.E., Walter E.G., Sherburne R., Bazett-jonnes D.P. 1998: Structure and location of tellurium deposited in *Escherichia coli* cells harboring tellurite resistance plasmids. *J. Ultrastruct. Mol. Struct. Res.* **99**: 8-26.
- Trevors J.T., Oddie K.M., Belliveau B.H. 1985: Metal resistance in bacteria. *FEMS Microbiol. Rev.* **32**: 39-54.
- Turner R.J., Hou Y., Weiner J.H., Taylor D.E. 1992: The arsenical ATPase efflux pump mediates tellurite resistance. *J. Bacteriol.* **174**: 3092-3094.
- Turner R.J. 2001: Tellurite toxicity and resistance in Gram-negative bacteria. *Recent Res. Dev. Microbiol.* **5**: 9-77.
- Turner R., Weiner j., Taylor D. 1992: Use of diethyldithiocarbamate for quantitative determination of tellurite uptake by bacteria. *Anal. Biochem.* 204-295.
- Ventosa A., Nieto J.J., Oren A. 1998: Biology of moderately halophilic aerobic bacteria. *Microbiol. Mol. Biol. Rev.* **62**: 504-544.
- Wagner M., Towes A.D., Morell P. 1995: Tellurium blocks cholesterol synthesis by inhibiting seualene metabolism: preferential vulanerability to this metabolicblock eads to peripheral nerous system demyelination. *J. Neurochem.* **57**: 1891-1901.
- Walter E.G., Taylor D.E. 1992: Plasmid-mediated resistance to tellurite: exprssed and cryptic. *Plasmid.* **27**: 52-64.
- Washington J.A., Sutter V.L. 1980: Dilution susceptibility test: agar and macro-broth dilution procedures. In Lennette E. H., Balows A., Hausler W. J. Jr. & Truant J. (eds), *Manual of clinical microbiology*. Pp. 453-458. American Society for Microbiology, Washington, D.C. 3rd ed.
- Yamada A., Miyagishima N., Matsunaga T. 1997: Tellurite removal by marine photosynthetic bacteria. *J. Mar. Biotechnol.* **5**: 46-49.