

() ()

()

E-mail: esmaili@khayam.ut.ac.ir

(11 : 11 :)

()

N"-L Ln N"-L (CSD)

(CSD)

() -

· : / : /

() () () ()
() () ()

()
()

() ()

()

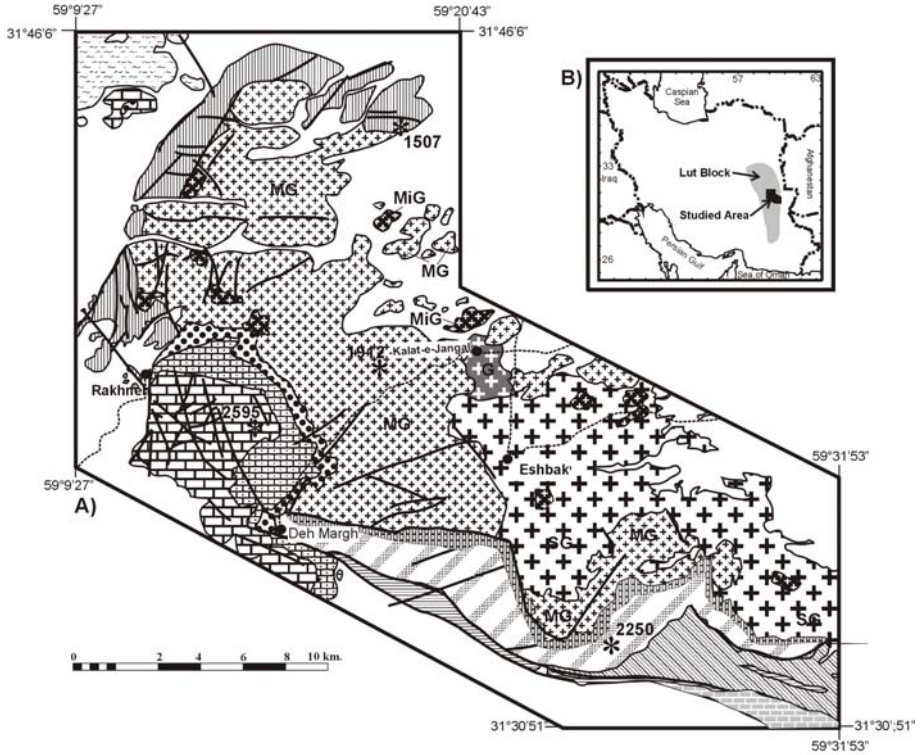
() -

()

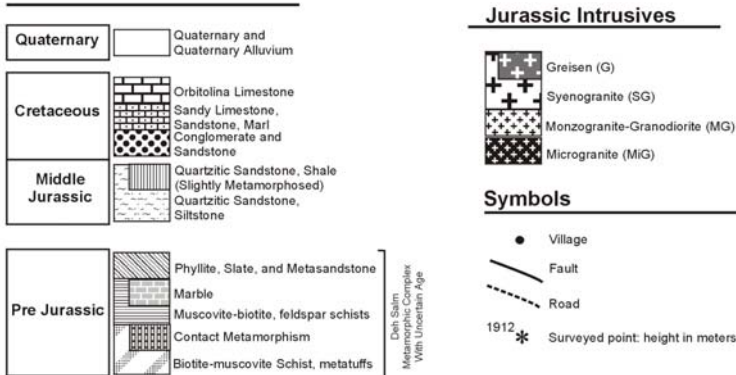


(Stoklin *et al.*, 1972)

Simplified Geological Map of Shah-kuh Area, East Iran



Legend



Jurassic Intrusives



Symbols



Ar K Ar- Ar
()

± / ()

()

()

()

()

()

)

(

:

()

:

:

()

K

()



()

:

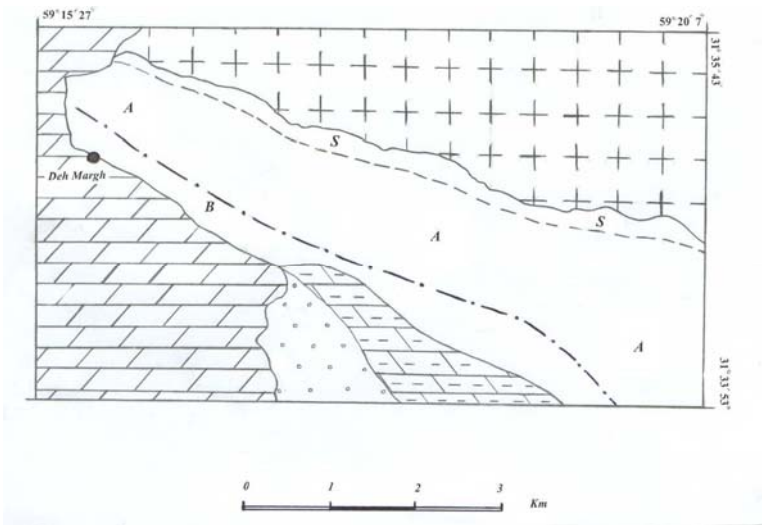
()

:

+ +

K

()



()
 () :

B **A** **S**



(*)

K

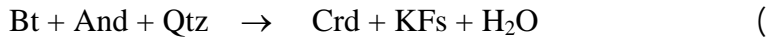
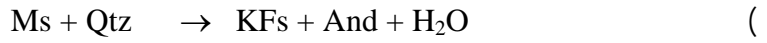
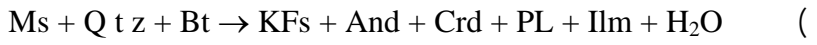
()

()

:

K

()



K

)

(

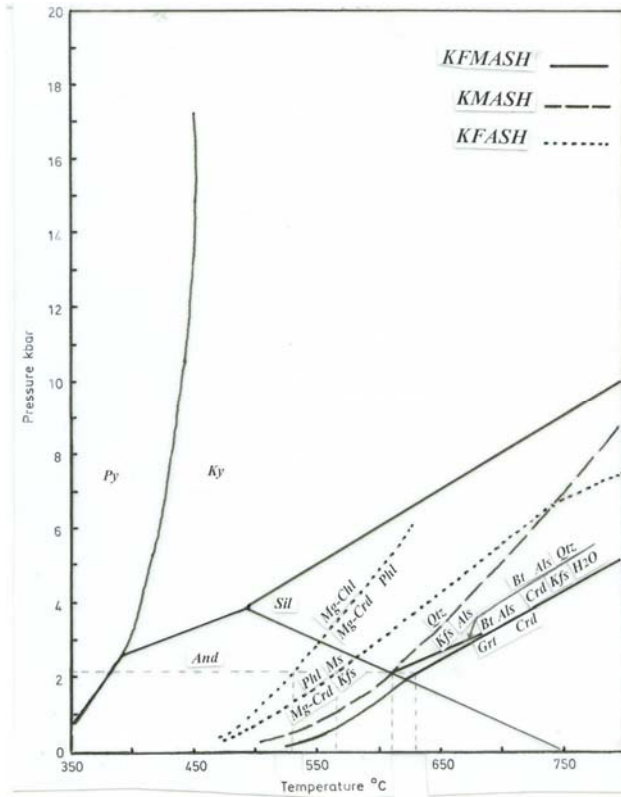
()

)

(

K

K -



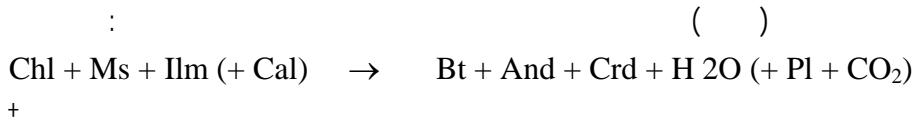
KFMASH KFASH, KFMASH

(Spear & Cheney, 1989)

()

()

()



+

)

(

()

()

()

()

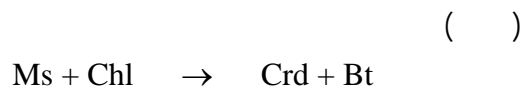
()

)

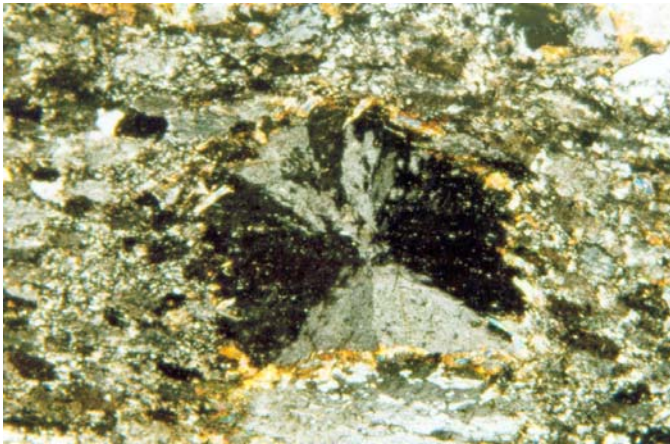
()

()

((Sector trilling)



()



()

:(CSD)

()

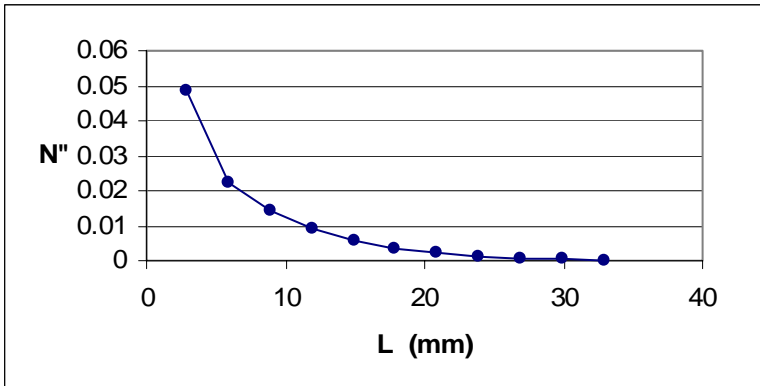
(Crystal Size Distribution)

:

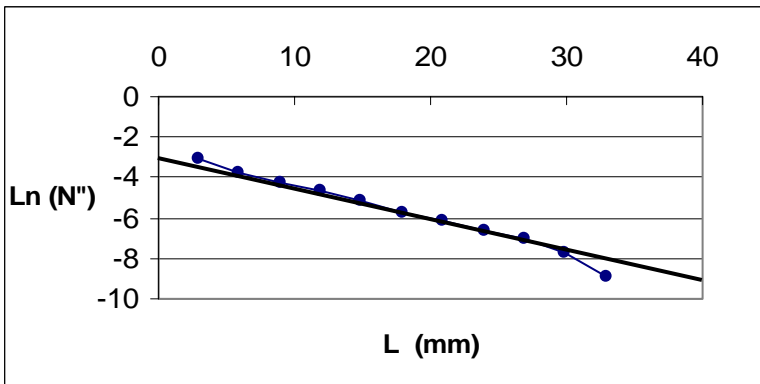
)

(

()



$N'' - L$



$\ln(N'') - L$

()

(CSD)

KMASH

KFMASH

//

Reference

- Asklund, B. (1927) *Zur geologie ostpersiens auf grund der von sven hedin gesammelten gesteinsproben*. In: Eine routenaufnahme durch ostpersien, S. hedin, Bd. **2**, 384-446.
- Bariand, P., Issakhanian V. and Sadrzadeh, M. (1965) *Preliminary metallogenic map of Iran*, Geol. Survey Iran. Rep. 7.
- Berberian, M. and Soheili, M. (1973) *Structural history of Lut Zone*. Geol. Surv. Iran, Tehran, Intern, Rep. No. 34.
- Bobek, H. (1969) *Zur kenntnis der sudlichen lut*, Mitt. Osterr. Geogr. Ges., Vol. 11.1 Hft. II / III: 155-192.
- Deer, W.A., Howie, R.A. and Zussman, J. (1986) *An introduction to the rock forming minerals*. Longman. V. 2.
- Dresch, J. (1968) *Reconnaissance dans le Lut (Iran)*, Bull. Assoc. Geogr. Fr. Nos. 362-363, pp. 143-153.
- Ferry, J.M. (1989) Contact metamorphism of roof pendants at Hope Valley. Alpine County, California, USA, **101**, 402-417.
- Gabriel, A. (1952) *Die erforschung persiens*: Wien (Holzhausen), 359p 1964. Zum problem des formenschatzes in exterem ariden Raumen: Mitt. Osterr.Geogr. Ges., Bd. 106.
- Kitamura, M. and Yamada, H. (1987) *Origin of Sector trilling in cordierite in Paimonji hornfels, Kyato Japan*. Contrib. Mineral. Petrol. **97**, 1-6.
- Korshinskii, D. S. (1988) *Theory of metasomatic zoning*. Clarendon Press, Oxford, p.162
- Marsh, B.D. (1988) *Crystal size distribution (CSD) in rocks and the kinetics and dynamics of crystalization 1: Theory*. Contrib. Mineral. Petrol. **99**, 277-291.
- Miyashiro, A. (1994) *Metamorphic Petrology*.UCL press. p.404.
- Peterson. T. D. (1996) *A refined technique for measuring crystal size distributions in thin section*. Contrib. Mineral. Petrol. **124**, 394-405.
- Pitra, P., and Guiraud, M. (1996) *Probable anti clock wise P-T evolution in extendiny crust: Hlinsko region, Bohemian Massif*. J. metamorphic Geol. **14**, 49-60.
- Putnis, A., and Holland, T.J.B. (1986) *Sector trilling in cordierite and equilibrium overstepping in metamorphism*. Contrib. Mineral. Petrol. **93**, 262-272.

- Reyre, D., and Mohafez, S. (1970) *Une premiere contribution des accords NIOC-ERAP a La Connaissance geologique de l'Iran*: Rev. Inste. Fr. Petrole, **25(9)**, 979-1014.
- Sedlacek, A.M. (1936) *Petrographische beobachtungen an den von A. Gabriel gesammelten gesteinen aus persien*. Zweiter Teil: Min. U. Petr. Mitt., **47**, 295-388.
- Spear, F.S., and Cheney, J.T. (1989) *A petrogenetic grid for pelitic schists in the system KFMASH*. Contrib. Mineral. Petrol. **101**, 149-164.
- Stoklin, J., Eftekhari-Nezhad, J., Hushmand-Zadeh, A. (1972) *Geological reconnaissance map of Central Lut*, Geol. Surv. Iran, Tehran, Rep. No. 22.
- Symmes, G.H. and Ferry, J. M. (1995) *Metamorphism, fluid flow and partial melting in pelitic rocks from the Onawa contact Aureole, central Maine, USA*. Contrib. Mineral. Petrol. **36**, 587-612.
- Turner, F.G. and Verhoogen, J. (1960) *Igneous and metamorphic petrology*. McGraw-Hill.
- Vernon, R.H., Paterson, S.R. and Foster, D. (1993) *Growth and deformation of porphyroblast in the Foothills terrane, Central Sierra Nevada, California: negotiating a microstructural minefield*. Metamorphic Geol. **11**, 203-222.

() ()

() ()

() ()